

MEDLOCK
HOUSE

WATERHOUSE GARDENS



04

ABOUT MEDLOCK HOUSE

06/09

WATERHOUSE CLUB

10/17

THE APARTMENTS

36/51

GROUND TO LEVEL 01

52/60

LEVELS 02 TO 10

62/66

LEVEL 11

68/77

LEVELS 12 TO 14

78/79

SPECIFICATION

WELCOME TO
MEDLOCK
HOUSE
AT
WATERHOUSE
GARDENS

The MEDLOCK House residences include 1 and 2 bedroom apartments, duplex townhouses and penthouses. From a fresh colour palette to top-quality fittings and considerable natural light, these homes are designed to create a contemporary and elegant feel.

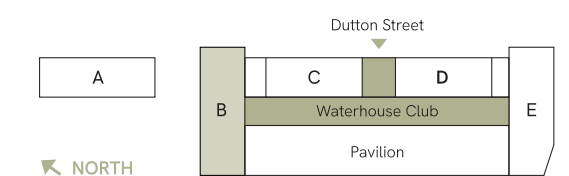
With direct access to The Waterhouse Club, residents benefit from the private amenities curated for an elevated, modern lifestyle.

WATERHOUSE CLUB

Amenities

ON YOUR DOORSTEP

The Waterhouse Club is home to a collection of amenities that sets a new benchmark for health and leisure, from your doorstep. A club that promotes wellness and community, every facility has been designed with style, functionality and wellbeing in mind.





Work

CO-WORKING

The co-working space and library lounge is a welcoming but practical space designed to fulfil the requirements of modern, hybrid working.



Entertain

CINEMA & DINING

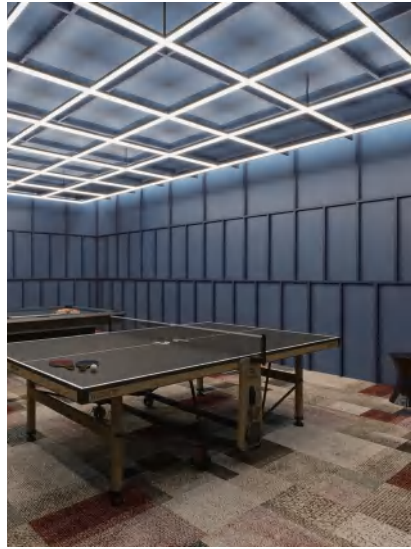
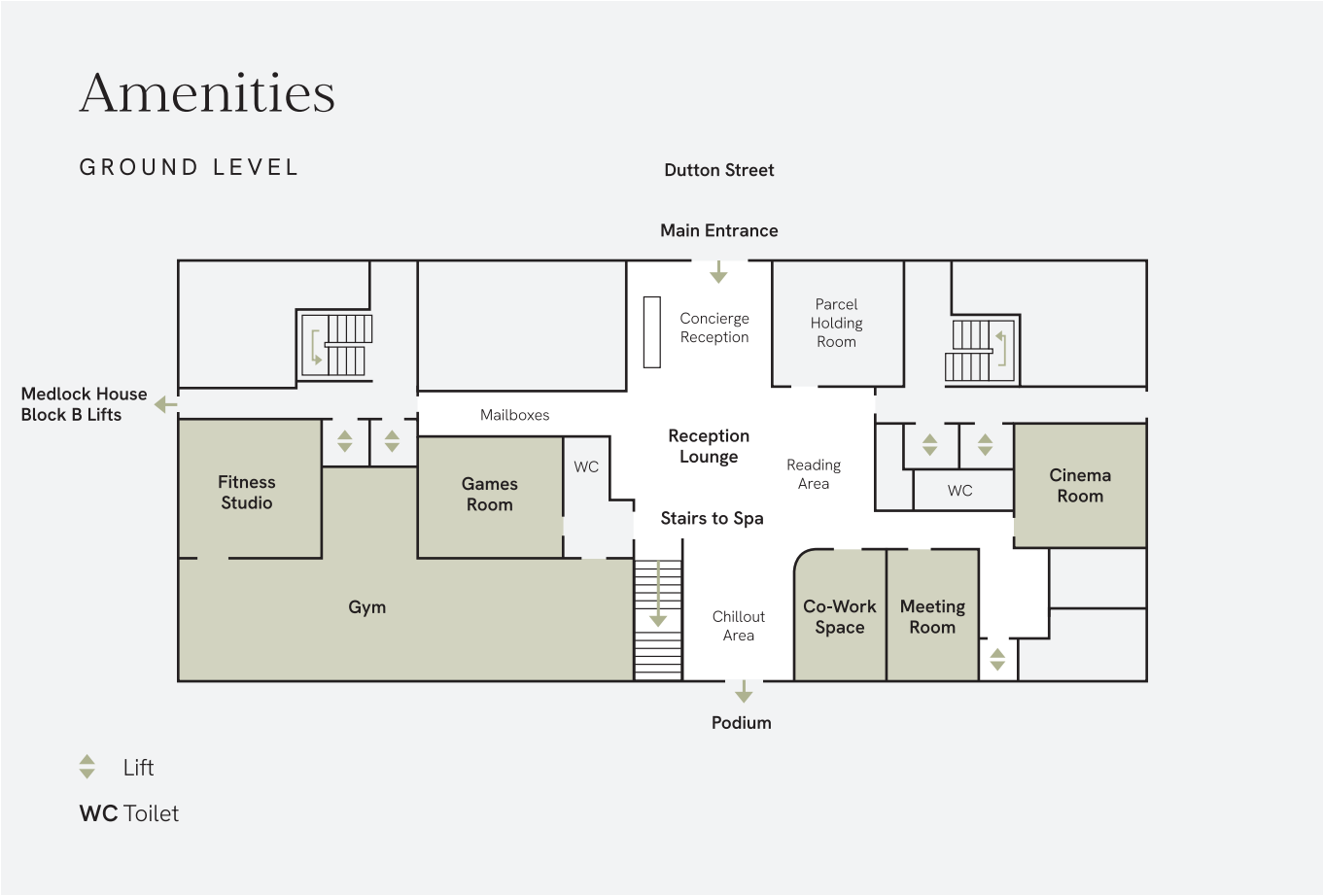
The cinema room is available for residents to hire for an immersive, private cinema experience, whilst the private dining room provides a more intimate setting to entertain family and friends.



Get Fit

GYMNASIUM

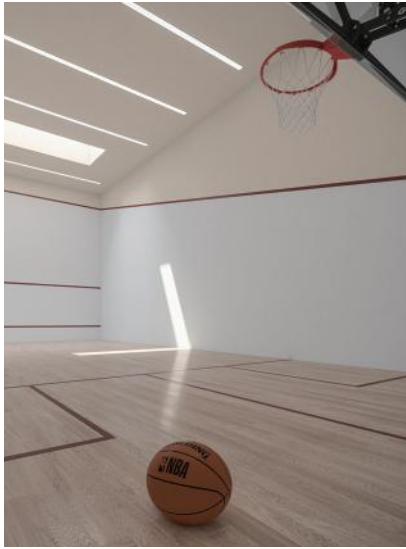
A fully equipped gymnasium and fitness studio is designed to help residents achieve their exercise goals.



Play

GAMES ROOM

The games area is ideal for those looking to socialise and participate in some good-natured competition with family, friends and neighbours.



Challenge

BASKETBALL & SQUASH

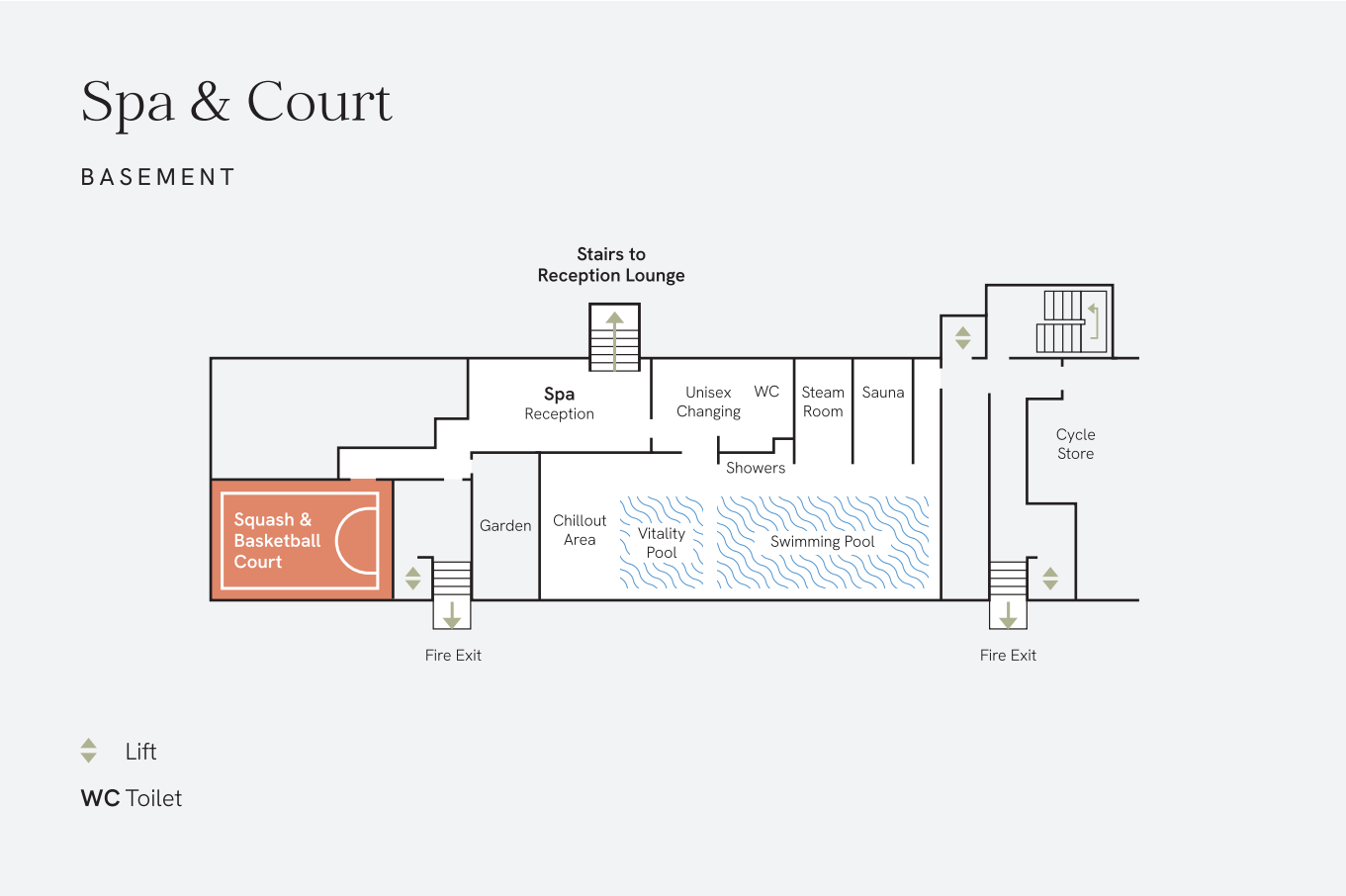
A half-size basketball and squash court allows for residents to let off steam and play sports in style.



Relax

SWIMMING POOL

A swimming pool and spa equipped with a cold plunge pool, experience shower, steam room and sauna, create a serene environment for residents to unwind and recuperate.



MEDLOCK HOUSE

Show Apartment

NOW OPEN FOR VIEWINGS
BY APPOINTMENT ONLY

The Apartments

HOTEL LIKE LIVING

Apartment layouts and interiors are spacious, contemporary and adaptable. Sophistication meets comfort in every detail.



THE RESIDENCES

Kitchen

The kitchen boasts bespoke cabinetry with gloss finishes, integrated modern appliances, and warm-toned lighting.



THE RESIDENCES

Living space

Carefully designed,
living spaces are
bright, spacious
and adaptable.



THE RESIDENCES

Bedroom

Warm and inviting, the bedroom offers a luxury sanctuary for rest and relaxation.



THE RESIDENCES

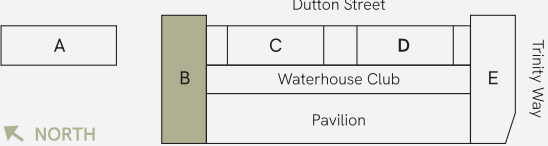
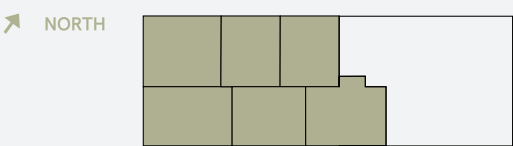
Bathroom

Crafted with the finest fixtures, tiling and cabinetry each bathroom and en-suite offers a space for residents to refresh and unwind.

FLOORPLANS

Floorplates

Townhouses



GROUND LEVEL



- Refuse Chute
- Lift
- Store Cupboard / Water Cylinder
- Wardrobe Space
- Utility

3 BEDROOM TOWN HOUSES

Disclaimer: Blinds, curtains, curtain rails not included. Wardrobes not included indicative of space only. All dimensions are taken approximately from the middle of the room (◀▶). Each layout may vary. All measurements may vary within the tolerance percentage agreed. The dimensions are not intended for use for carpet/ flooring sizes, appliances or furniture. Kitchen layout is indicative only and may be subject to change. Specification and finishes are subject to change if materials and appliances are discontinued or not readily available.

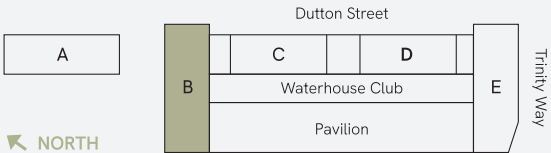
Unit No.	Unit Size	
B01	73.7m ²	793.3ft ²
B02	64.1m ²	689.9ft ²
B03	77.3m ²	832ft ²
B04	80.8m ²	869.7ft ²
B05	60.7m ²	653.3ft ²
B06	61.9m ²	666.2ft ²

APARTMENT LOCATOR

How to identify your apartments number

Block	Level	Unit	=	Postal Number
B	1	1	=	B11
B	14	2	=	B142

Full floor plate



- Refuse Chute
- Lift
- Store Cupboard / Water Cylinder
- Wardrobe Space
- Utility

1 BEDROOM

2 BEDROOM

3 BEDROOM TOWN HOUSES

Disclaimer: Blinds, curtains, curtain rails not included. Wardrobes not included indicative of space only. All dimensions are taken approximately from the middle of the room («»). Each layout may vary. All measurements may vary within the tolerance percentage agreed. The dimensions are not intended for use for carpet/flooring sizes, appliances or furniture. Kitchen layout is indicative only and may be subject to change. Specification and finishes are subject to change if materials and appliances are discontinued or not readily available.

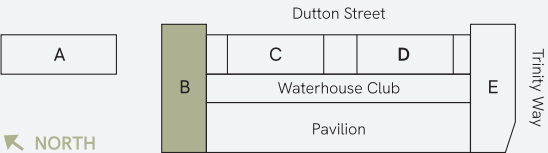
Unit No.	Unit Size		Unit No.	Unit Size	
B01	70.1m ²	754.5ft ²	B11	50.8m ²	546.8ft ²
B02	62.1m ²	668.4ft ²	B12	61.4m ²	660.9ft ²
B03	77.3m ²	832ft ²	B13	50.8m ²	546.8ft ²
B04	61.8m ²	664.9ft ²	B14	50.8m ²	546.8ft ²
B05	50.7m ²	545.7ft ²			
B06	51.8m ²	557.5ft ²			

APARTMENT LOCATOR

How to identify your apartments number

Block	Level	Unit	=	Postal Number
B	1	1	=	B11
B	14	2	=	B142

Full floor plate



- Refuse Chute
- Lift
- Store Cupboard / Water Cylinder
- Wardrobe Space
- Utility

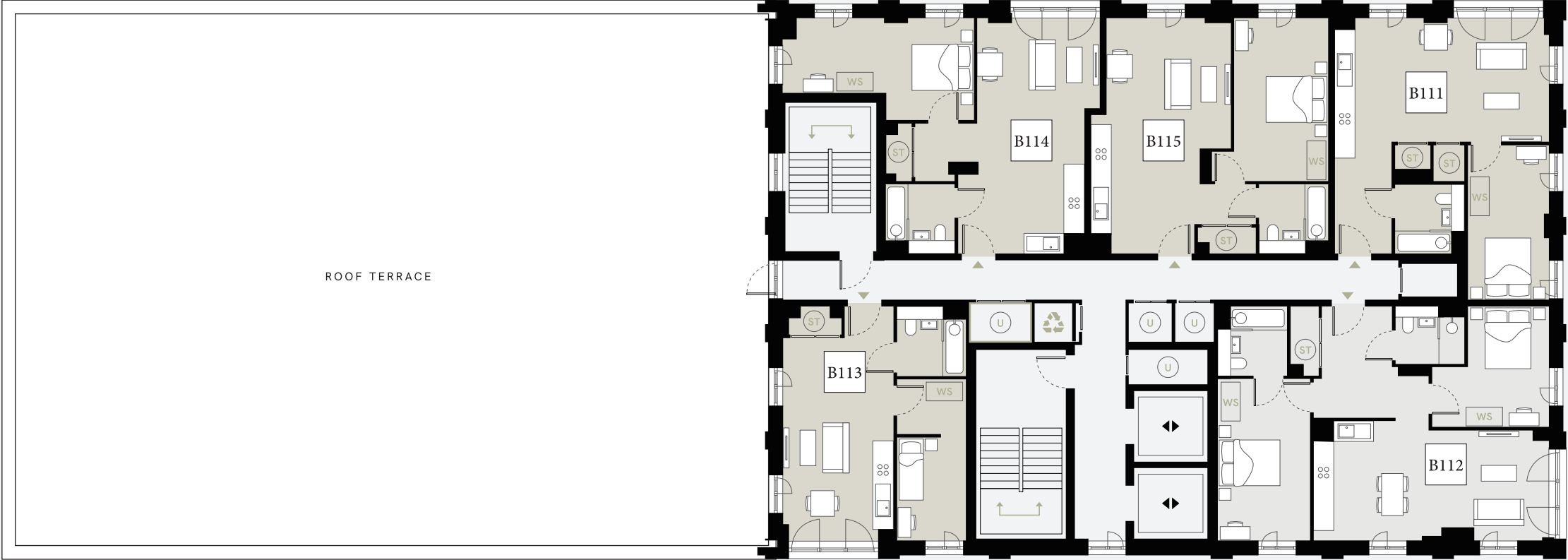
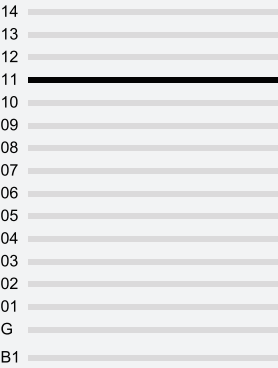
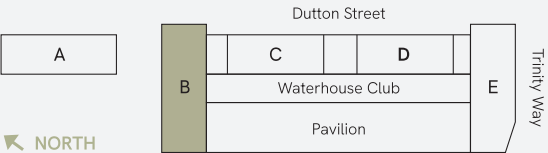
1 BEDROOM 2 BEDROOM

Disclaimer: Blinds, curtains, curtain rails not included. Wardrobes not included indicative of space only. All dimensions are taken approximately from the middle of the room (↔). Each layout may vary. All measurements may vary within the tolerance percentage agreed. The dimensions are not intended for use for carpet/flooring sizes, appliances or furniture. Kitchen layout is indicative only and may be subject to change. Specification and finishes are subject to change if materials and appliances are discontinued or not readily available.

Unit No.	Unit Size		Unit No.	Unit Size	
B21	73.6m ²	792.2ft ²	B27	50.2m ²	540.3ft ²
B22	74.9m ²	806.2ft ²	B28	52.1m ²	560.7ft ²
B23	53.7m ²	578.0ft ²	B29	76.8m ²	826.6ft ²
B24	55.5m ²	597.3ft ²			
B25	84.7m ²	911.7ft ²			
B26	85.5m ²	920.3ft ²			

APARTMENT LOCATOR				
How to identify your apartments number				
Block	Level	Unit	=	Postal Number
B	1	1	=	B11
B	14	2	=	B142

Full floor plate



- Refuse Chute
- Lift
- ST** Store Cupboard / Water Cylinder
- WS** Wardrobe Space
- U** Utility

1 BEDROOM

2 BEDROOM

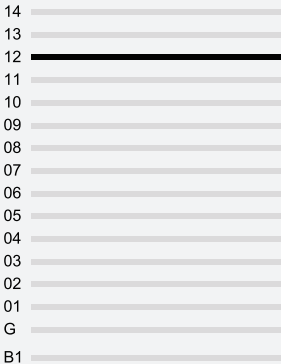
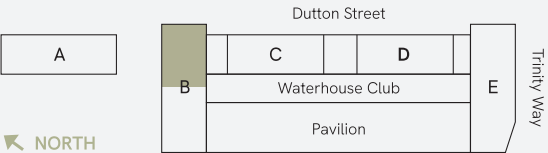
Disclaimer: Blinds, curtains, curtain rails not included. Wardrobes not included indicative of space only. All dimensions are taken approximately from the middle of the room (↔). Each layout may vary. All measurements may vary within the tolerance percentage agreed. The dimensions are not intended for use for carpet/flooring sizes, appliances or furniture. Kitchen layout is indicative only and may be subject to change. Specification and finishes are subject to change if materials and appliances are discontinued or not readily available.

Unit No.	Unit Size	
B111	50.2m ²	540.3ft ²
B112	71.4m ²	768.5ft ²
B113	39.8m ²	428.4ft ²
B114	51.6m ²	555.4ft ²
B115	50.3m ²	541.4ft ²

APARTMENT LOCATOR				
How to identify your apartments number				
Block	Level	Unit	=	Postal Number
B	1	1	=	B11
B	14	2	=	B142

LEVELS 12

Full floor plate



- Refuse Chute
- Lift
- Store Cupboard / Water Cylinder
- Wardrobe Space
- Utility

1 BEDROOM

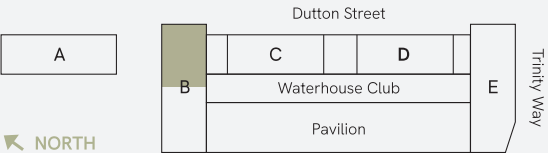
3 BEDROOM

Disclaimer: Blinds, curtains, curtain rails not included. Wardrobes not included indicative of space only. All dimensions are taken approximately from the middle of the room (↔). Each layout may vary. All measurements may vary within the tolerance percentage agreed. The dimensions are not intended for use for carpet/flooring sizes, appliances or furniture. Kitchen layout is indicative only and may be subject to change. Specification and finishes are subject to change if materials and appliances are discontinued or not readily available.

Unit No.	Unit Size		Terrace Size	
B121	111.2m ²	1196.9ft ²	9.5m ²	102ft ²
B122	39.8m ²	428.4ft ²	-	
B123	95.7m ²	1030.1ft ²	6.5m ²	70ft ²

APARTMENT LOCATOR				
How to identify your apartments number				
Block	Level	Unit	=	Postal Number
B	1	1	=	B11
B	14	2	=	B142

Full floor plate



- 14
- 13
- 12
- 11
- 10
- 09
- 08
- 07
- 06
- 05
- 04
- 03
- 02
- 01
- G
- B1



- Refuse Chute
- Lift
- Store Cupboard / Water Cylinder
- Wardrobe Space
- Utility

2 BEDROOM 3 BEDROOM

Disclaimer: Blinds, curtains, curtain rails not included. Wardrobes not included indicative of space only. All dimensions are taken approximately from the middle of the room (↔). Each layout may vary. All measurements may vary within the tolerance percentage agreed. The dimensions are not intended for use for carpet/flooring sizes, appliances or furniture. Kitchen layout is indicative only and may be subject to change. Specification and finishes are subject to change if materials and appliances are discontinued or not readily available.

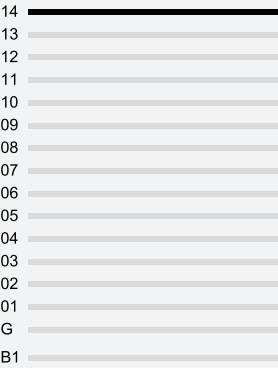
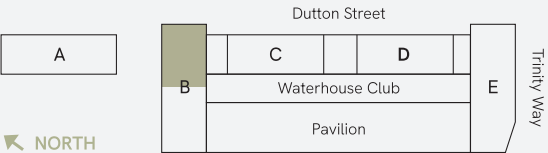
Unit No.	Unit Size		Terrace Size	
B131	111.2m ²	1196.9ft ²	9.5m ²	102ft ²
B132	39.8m ²	428.4ft ²	-	
B133	95.7m ²	1030.1ft ²	6.5m ²	70ft ²

APARTMENT LOCATOR

How to identify your apartments number

Block	Level	Unit	=	Postal Number
B	1	1	=	B11
B	14	2	=	B142

Full floor plate



- Refuse Chute
- Lift
- Store Cupboard / Water Cylinder
- Wardrobe Space
- Utility

2 BEDROOM 3 BEDROOM

Disclaimer: Blinds, curtains, curtain rails not included. Wardrobes not included indicative of space only. All dimensions are taken approximately from the middle of the room (◀▶). Each layout may vary. All measurements may vary within the tolerance percentage agreed. The dimensions are not intended for use for carpet/flooring sizes, appliances or furniture. Kitchen layout is indicative only and may be subject to change. Specification and finishes are subject to change if materials and appliances are discontinued or not readily available.

Unit No.	Unit Size		Terrace Size	
B132	39.8m ²	428.4ft ²	-	
B141	111.2m ²	1196.9ft ²	9.5m ²	102ft ²
B142	95.7m ²	1030.1ft ²	6.5m ²	70ft ²

APARTMENT LOCATOR

How to identify your apartments number

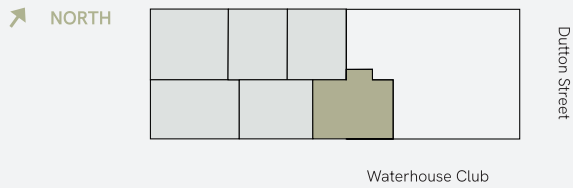
Block	Level	Unit	=	Postal Number
B	1	1	=	B11
B	14	2	=	B142

FLOORPLANS

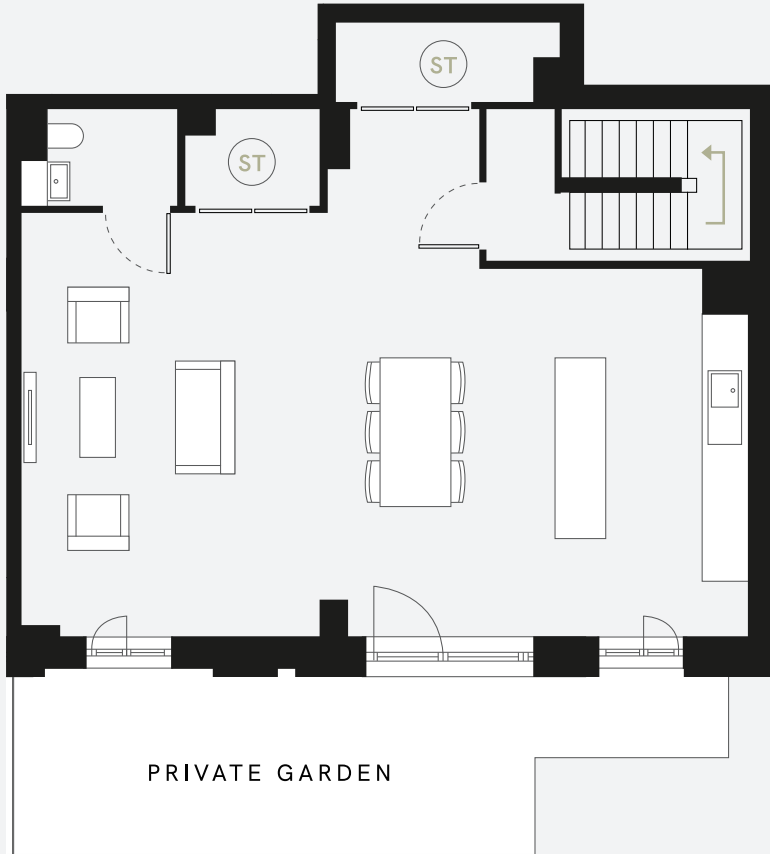
Apartment Types

GROUND LEVEL

B01



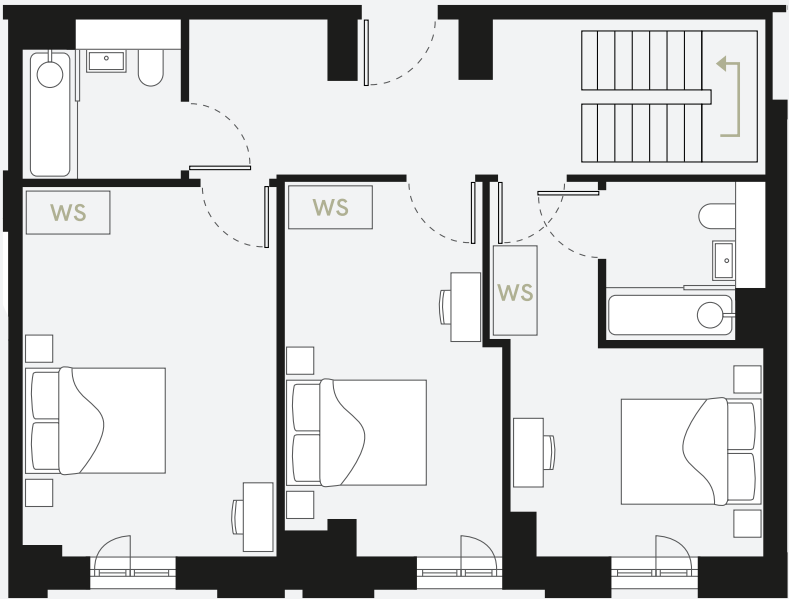
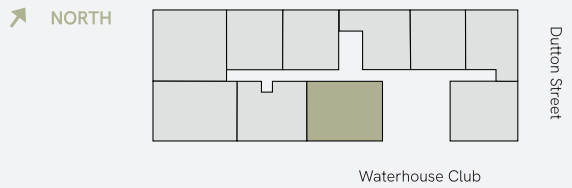
3 BEDROOM TOWN HOUSE



PRIVATE GARDEN

LEVEL 01

B01



Living / Kitchen

9.84m x 7.12m 32.28ft x 23.35ft

Bedroom 1

4.96m x 3.38m 16.27ft x 11.08ft

Bedroom 2

4.96m x 2.89m 16.27ft x 9.48ft

Bedroom 3

4.91m x 3.36m 16.10ft x 11.02ft

Ground Level Area

73.7m² 793.3ft²

Level 1 Area

70.1m² 754.5ft²

Total Living Area

143.8m² 1548ft²

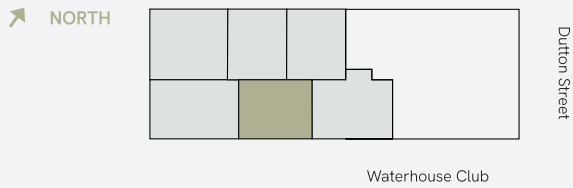
ST Store Cupboard / Water Cylinder

WS Wardrobe Space

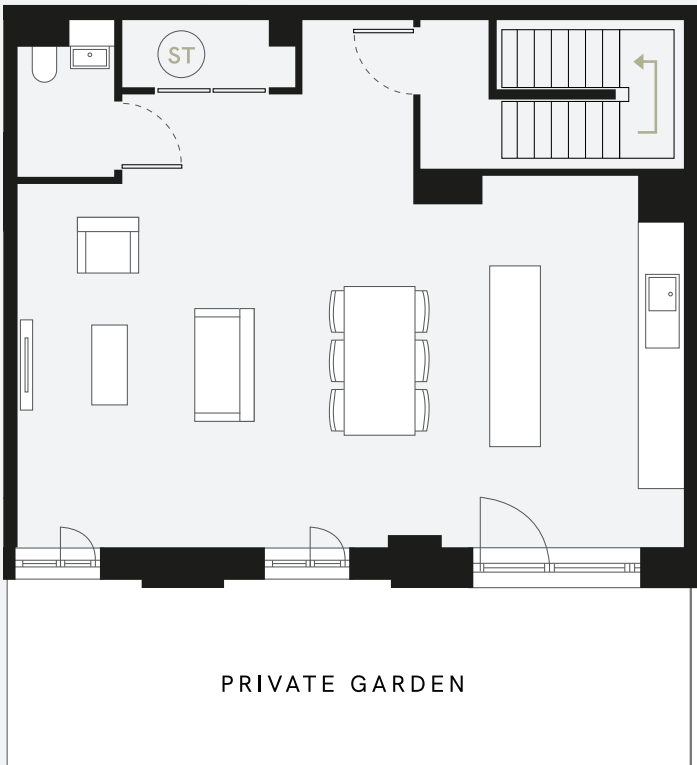
Disclaimer: Blinds, curtains, curtain rails not included. Wardrobes not included indicative of space only. All dimensions are taken approximately from the middle of the room (◀▶). Each layout may vary. All measurements may vary within the tolerance percentage agreed. The dimensions are not intended for use for carpet/ flooring sizes, appliances or furniture. Kitchen layout is indicative only and may be subject to change. Specification and finishes are subject to change if materials and appliances are discontinued or not readily available.

GROUND LEVEL

B02

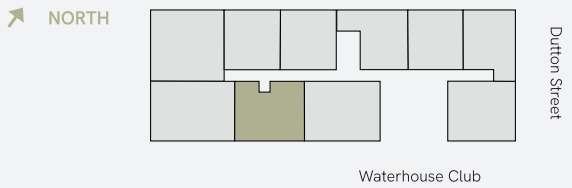


3 BEDROOM TOWN HOUSE



LEVEL 01

B02



Disclaimer: Blinds, curtains, curtain rails not included. Wardrobes not included indicative of space only. All dimensions are taken approximately from the middle of the room (◀▶). Each layout may vary. All measurements may vary within the tolerance percentage agreed. The dimensions are not intended for use for carpet/ flooring sizes, appliances or furniture. Kitchen layout is indicative only and may be subject to change. Specification and finishes are subject to change if materials and appliances are discontinued or not readily available.

Living / Kitchen

9.0m x 7.12m 29.52ft x 23.35ft

Bedroom 1

5.01m x 3.60m 16.43ft x 11.81ft

Bedroom 2

4.57m x 2.27m 14.99ft x 7.44ft

Bedroom 3

4.92m x 2.91m 16.14ft x 2.91ft

Ground Level Area

64.1m² 689.9ft²

Level 1 Area

62.1m² 668.4ft²

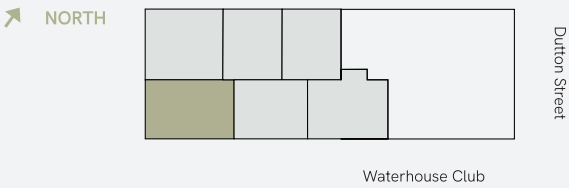
Total Living Area

126.2m² 1358ft²

ST Store Cupboard / Water Cylinder

WS Wardrobe Space

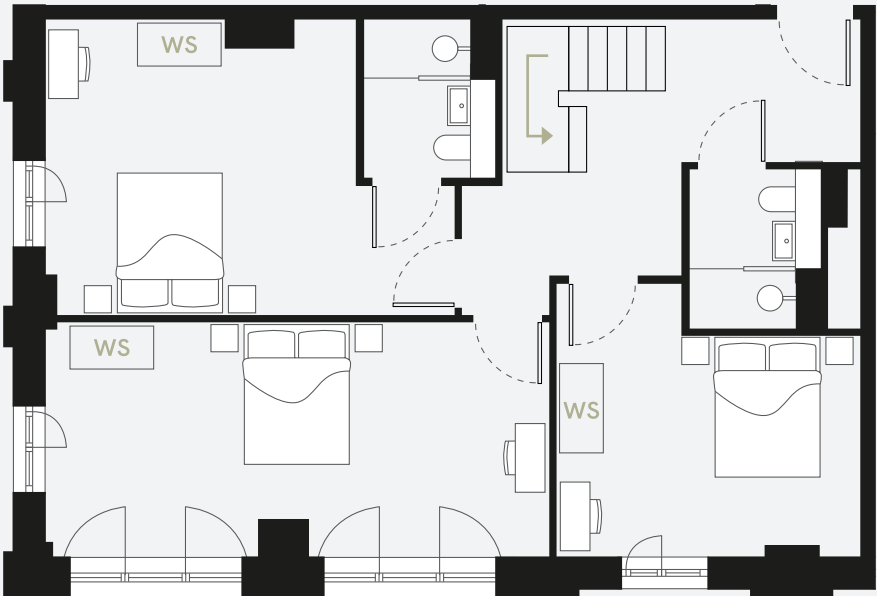
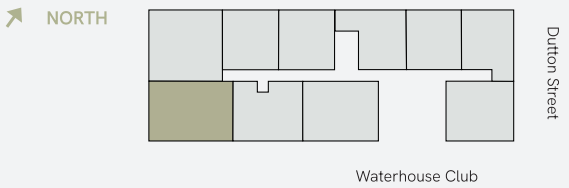
B03



3 BEDROOM TOWN HOUSE



B03



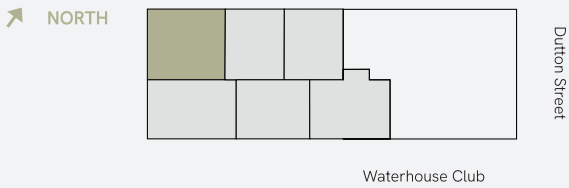
Disclaimer: Blinds, curtains, curtain rails not included. Wardrobes not included indicative of space only. All dimensions are taken approximately from the middle of the room (◀▶). Each layout may vary. All measurements may vary within the tolerance percentage agreed. The dimensions are not intended for use for carpet/ flooring sizes, appliances or furniture. Kitchen layout is indicative only and may be subject to change. Specification and finishes are subject to change if materials and appliances are discontinued or not readily available.

Living / Kitchen	
10.85m x 7.12m	35.59ft x 23.35ft
Bedroom 1	
3.62m x 4.06m	11.87ft x 13.32ft
Bedroom 2	
6.68m x 3.10m	21.91ft x 10.17ft
Bedroom 3	
5.42m x 3.91m	17.78ft x 12.82ft

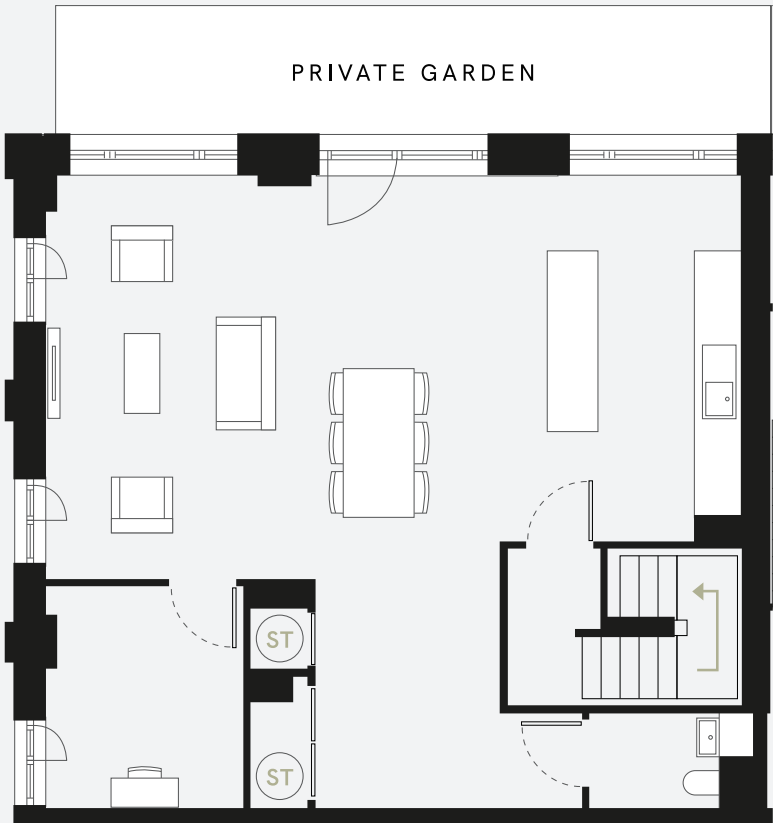
Ground Level Area	
77.3m²	832ft²
Level 1 Area	
77.3m²	832ft²
Total Living Area	
154.6m²	1664ft²

- ST Store Cupboard / Water Cylinder
- WS Wardrobe Space

B04

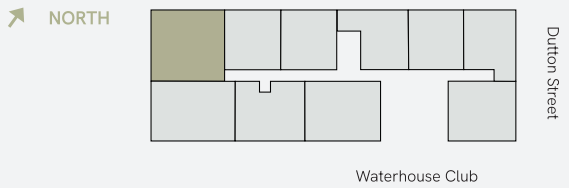


3 BEDROOM TOWN HOUSE



Disclaimer: Blinds, curtains, curtain rails not included. Wardrobes not included indicative of space only. All dimensions are taken approximately from the middle of the room (↔). Each layout may vary. All measurements may vary within the tolerance percentage agreed. The dimensions are not intended for use for carpet/ flooring sizes, appliances or furniture. Kitchen layout is indicative only and may be subject to change. Specification and finishes are subject to change if materials and appliances are discontinued or not readily available.

B04

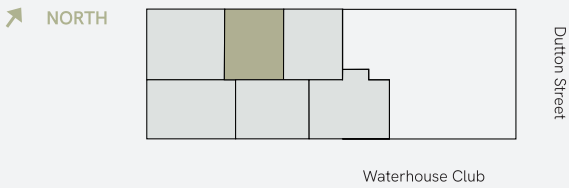


Living / Kitchen	
9.39m x 8.56m	30.8ft x 28.08ft
Office	
2.99m x 2.66m	9.8ft x 8.72ft
Bedroom 1	
5.73m x 2.99m	18.79ft x 9.80ft
Bedroom 2	
5.42m x 5.74m	17.78ft x 18.83ft
Bedroom 3	
3.40m x 5.14m	11.15ft x 16.86ft

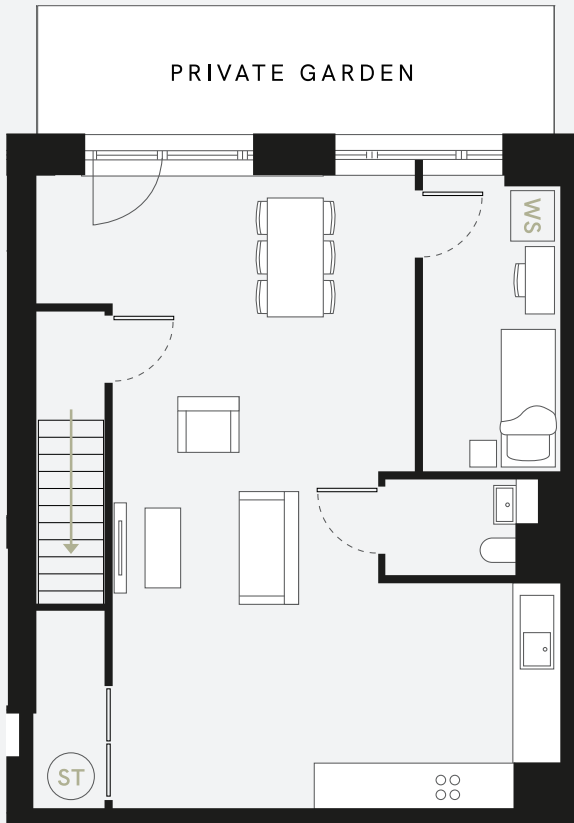
Ground Level Area	
80.8m ²	869.7ft ²
Level 1 Area	
61.8m ²	664.9ft ²
Total Living Area	
161.5m ²	1738ft ²

ST Store Cupboard / Water Cylinder
WS Wardrobe Space

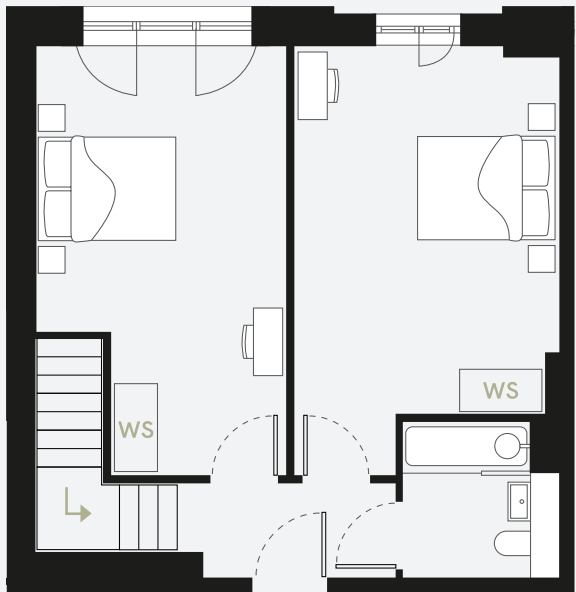
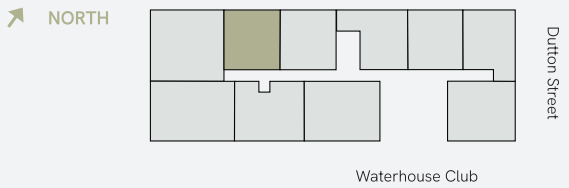
B05



3 BEDROOM TOWN HOUSE



B05



Living / Kitchen

8.56m x 6.04m 28.08ft x 19.81ft

Bedroom 1

4.01m x 1.85m 13.1ft x 6.06ft

Bedroom 2

5.78m x 3.31m 18.96ft x 10.85ft

Bedroom 3

5.78m x 3.65m 18.96ft x 11.97ft

Ground Level Area

60.7m² 653.3ft²

Level 1 Area

50.7m² 545.7ft²

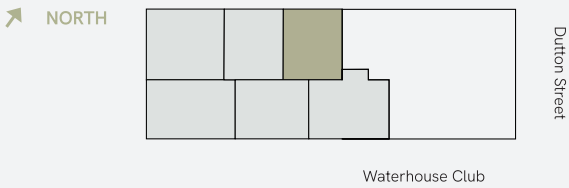
Total Living Area

111.4m² 1199ft²

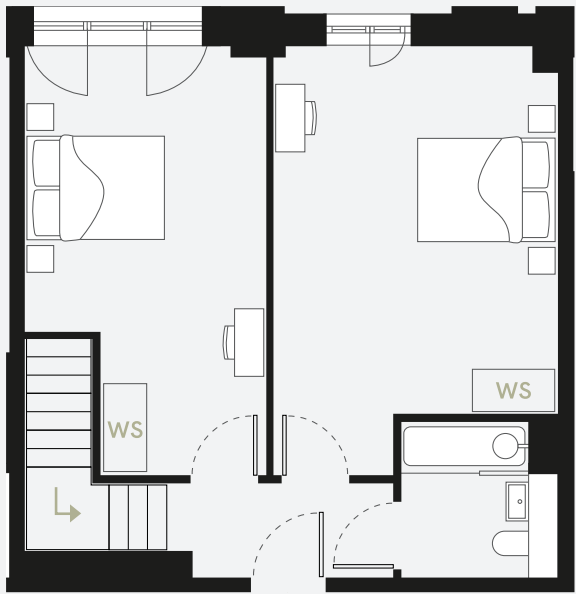
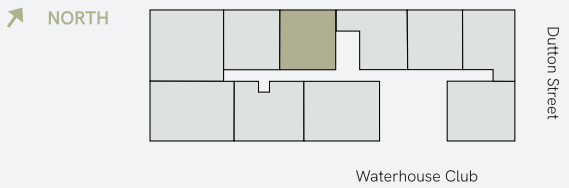
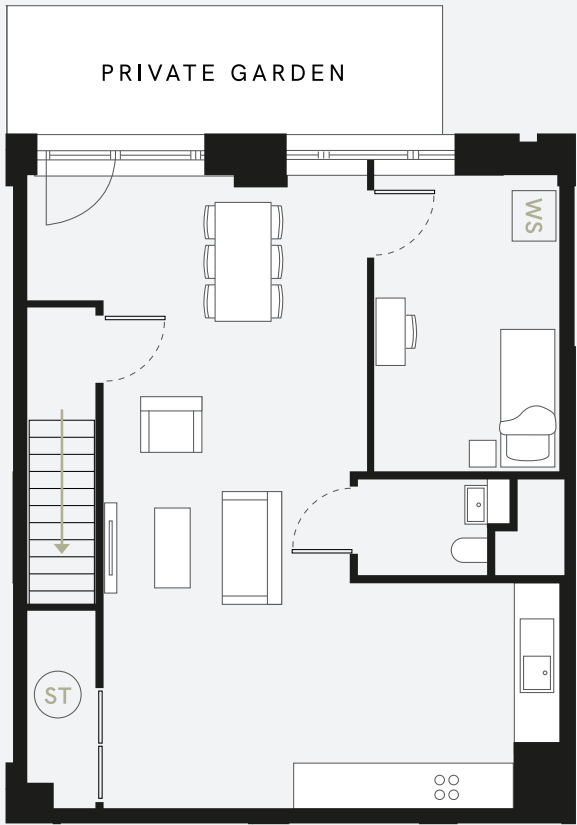
ST Store Cupboard / Water Cylinder

WS Wardrobe Space

Disclaimer: Blinds, curtains, curtain rails not included. Wardrobes not included indicative of space only. All dimensions are taken approximately from the middle of the room (◀▶). Each layout may vary. All measurements may vary within the tolerance percentage agreed. The dimensions are not intended for use for carpet/flooring sizes, appliances or furniture. Kitchen layout is indicative only and may be subject to change. Specification and finishes are subject to change if materials and appliances are discontinued or not readily available.



3 BEDROOM TOWN HOUSE



Living / Kitchen	
8.56m x 6.19m	28.08ft x 20.3ft
Bedroom 1	
4.01m x 2.53m	13.15ft x 8.3ft
Bedroom 2	
5.78m x 3.26m	18.96ft x 10.69ft
Bedroom 3	
5.78m x 3.86m	18.96ft x 12.66ft

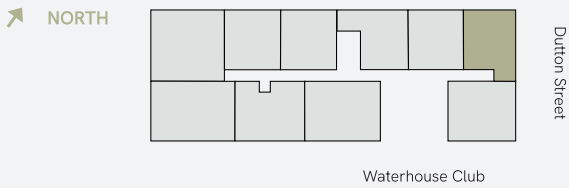
Ground Level Area	
61.9m ²	666.2ft ²
Level 1 Area	
51.8m ²	557.5ft ²
Total Living Area	
113.7m ²	1224ft ²

- ST Store Cupboard / Water Cylinder
- WS Wardrobe Space

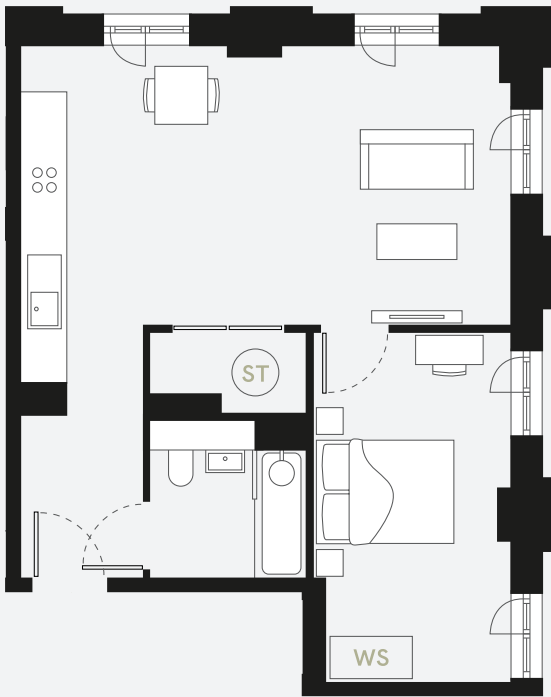
Disclaimer: Blinds, curtains, curtain rails not included. Wardrobes not included indicative of space only. All dimensions are taken approximately from the middle of the room (◀▶). Each layout may vary. All measurements may vary within the tolerance percentage agreed. The dimensions are not intended for use for carpet/ flooring sizes, appliances or furniture. Kitchen layout is indicative only and may be subject to change. Specification and finishes are subject to change if materials and appliances are discontinued or not readily available.

LEVEL 01

B11



1 BEDROOM



Living / Kitchen
7.16m x 6.60m 23.49ft x 21.65ft

Bedroom 1
4.70m x 2.65m 15.41ft x 8.69ft

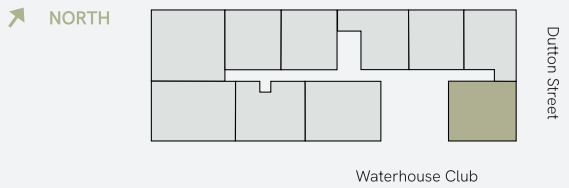
Total Living Area
50.8m² 546.8ft²

ST Store Cupboard / Water Cylinder
WS Wardrobe Space

Disclaimer: Blinds, curtains, curtain rails not included. Wardrobes not included indicative of space only. All dimensions are taken approximately from the middle of the room («»). Each layout may vary. All measurements may vary within the tolerance percentage agreed. The dimensions are not intended for use for carpet/ flooring sizes, appliances or furniture. Kitchen layout is indicative only and may be subject to change. Specification and finishes are subject to change if materials and appliances are discontinued or not readily available.

LEVEL 01

B12



1 BEDROOM



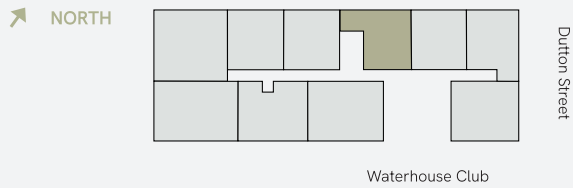
Living / Kitchen
7.10m x 8.59m 23.29ft x 28.18ft

Bedroom 1
4.64m x 3.39m 15.22ft x 10.95ft

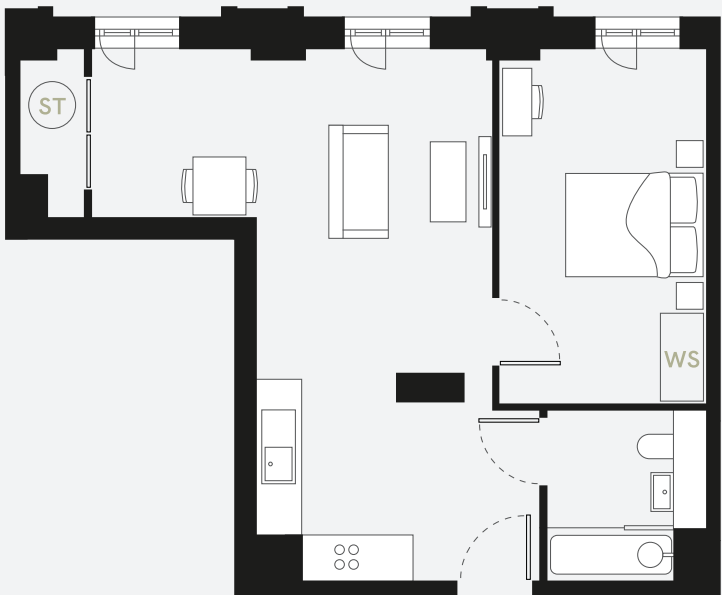
Total Living Area
61.4m² 660.9ft²

ST Store Cupboard / Water Cylinder
WS Wardrobe Space

B13



1 BEDROOM



Living / Kitchen
7.16m x 5.39m 23.49ft x 17.68ft

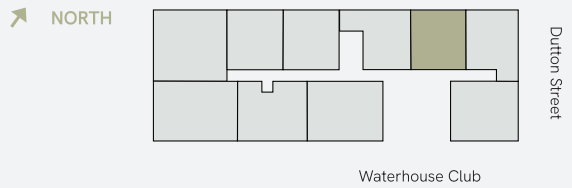
Bedroom 1
4.77m x 2.74m 15.64ft x 8.98ft

Total Living Area
50.8m² 546.8ft²

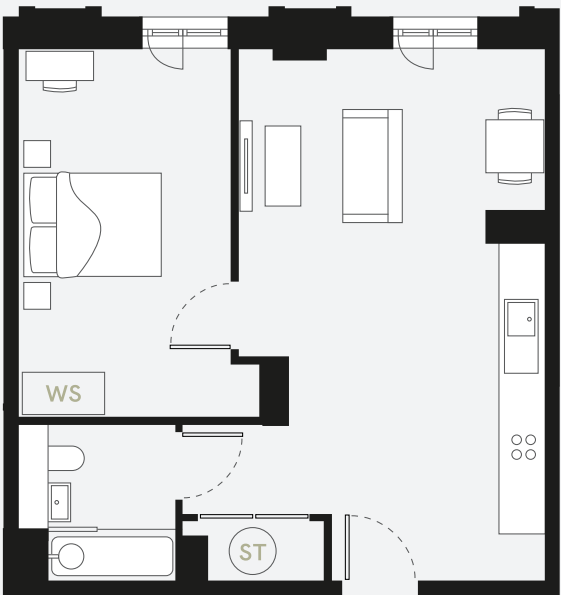
ST Store Cupboard / Water Cylinder
WS Wardrobe Space

Disclaimer: Blinds, curtains, curtain rails not included. Wardrobes not included indicative of space only. All dimensions are taken approximately from the middle of the room («»). Each layout may vary. All measurements may vary within the tolerance percentage agreed. The dimensions are not intended for use for carpet/ flooring sizes, appliances or furniture. Kitchen layout is indicative only and may be subject to change. Specification and finishes are subject to change if materials and appliances are discontinued or not readily available.

B14



1 BEDROOM



Living / Kitchen
7.16m x 4.89m 23.49ft x 16.04ft

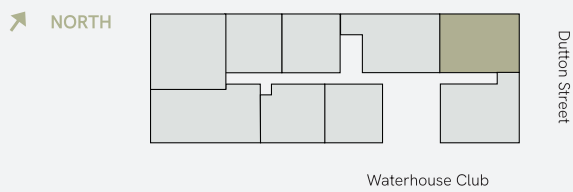
Bedroom 1
4.96m x 3.23m 16.27ft x 10.59ft

Total Living Area
50.8m² 546.8ft²

ST Store Cupboard / Water Cylinder
WS Wardrobe Space

LEVELS 02 TO 10

B21



2 BEDROOM



Living / Kitchen
7.29m x 4.94m 23.91ft x 16.20ft

Bedroom 1
4.96m x 2.87m 16.27ft x 9.41ft

Bedroom 2
3.99m x 2.97m 13.09ft x 9.74ft

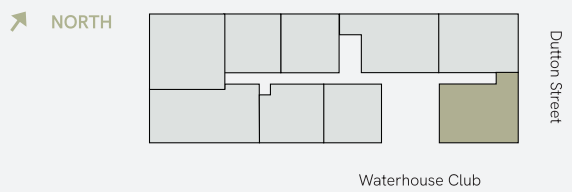
Total Living Area
73.6m² 792.2ft²

ST Store Cupboard / Water Cylinder
WS Wardrobe Space

Disclaimer: Blinds, curtains, curtain rails not included. Wardrobes not included indicative of space only. All dimensions are taken approximately from the middle of the room («»). Each layout may vary. All measurements may vary within the tolerance percentage agreed. The dimensions are not intended for use for carpet/ flooring sizes, appliances or furniture. Kitchen layout is indicative only and may be subject to change. Specification and finishes are subject to change if materials and appliances are discontinued or not readily available.

LEVELS 02 TO 10

B22



2 BEDROOM



Living / Kitchen
6.90 x 5.27m 22.63ft x 17.29ft

Bedroom 1
5.06m x 3.44m 16.60ft x 11.28ft

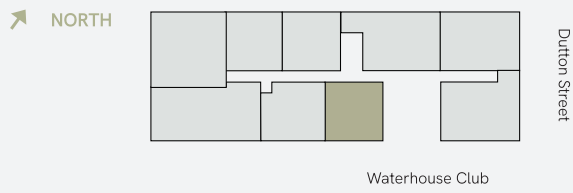
Bedroom 2
4.91m x 3.00m 16.10ft x 9.84ft

Total Living Area
74.9m² 806.2ft²

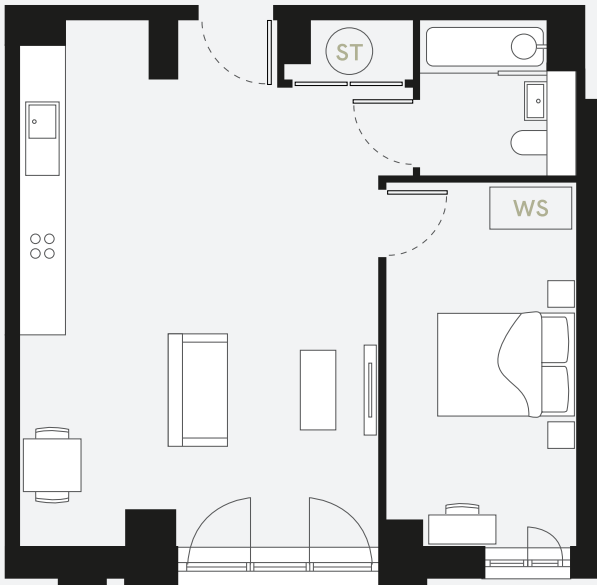
ST Store Cupboard / Water Cylinder
WS Wardrobe Space

LEVELS 02 TO 10

B23



1 BEDROOM



Living / Kitchen
7.12m x 4.84m 23.35ft x 15.87ft

Bedroom 1
4.91m x 2.59m 16.10ft x 8.49ft

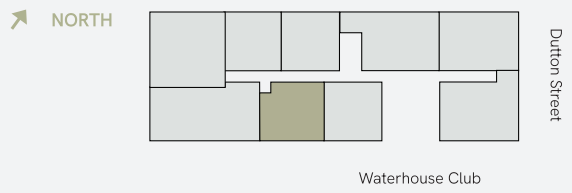
Total Living Area
53.7m² 578.0ft²

ST Store Cupboard / Water Cylinder
WS Wardrobe Space

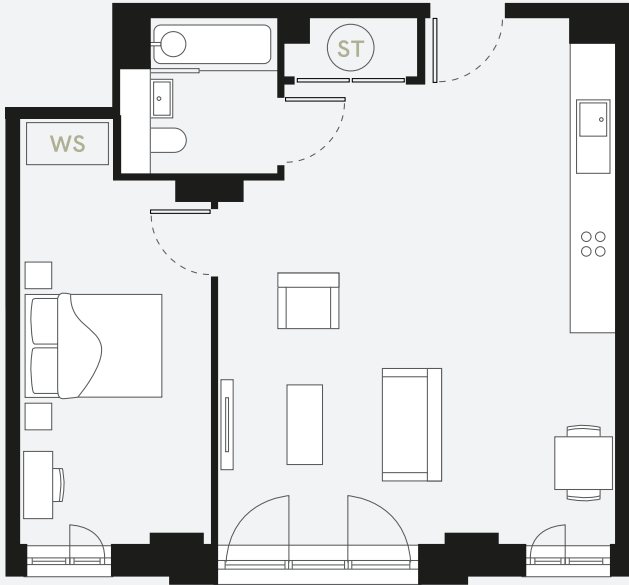
Disclaimer: Blinds, curtains, curtain rails not included. Wardrobes not included indicative of space only. All dimensions are taken approximately from the middle of the room («»). Each layout may vary. All measurements may vary within the tolerance percentage agreed. The dimensions are not intended for use for carpet/ flooring sizes, appliances or furniture. Kitchen layout is indicative only and may be subject to change. Specification and finishes are subject to change if materials and appliances are discontinued or not readily available.

LEVELS 02 TO 10

B24



1 BEDROOM



Living / Kitchen
7.12m x 5.37m 23.35ft x 17.61ft

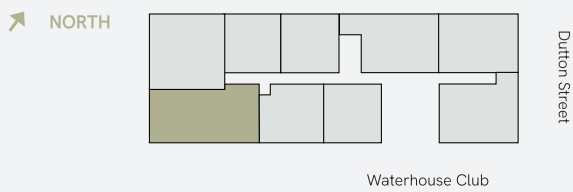
Bedroom 1
5.79m x 2.56m 18.99ft x 8.39ft

Total Living Area
55.5m² 597.3ft²

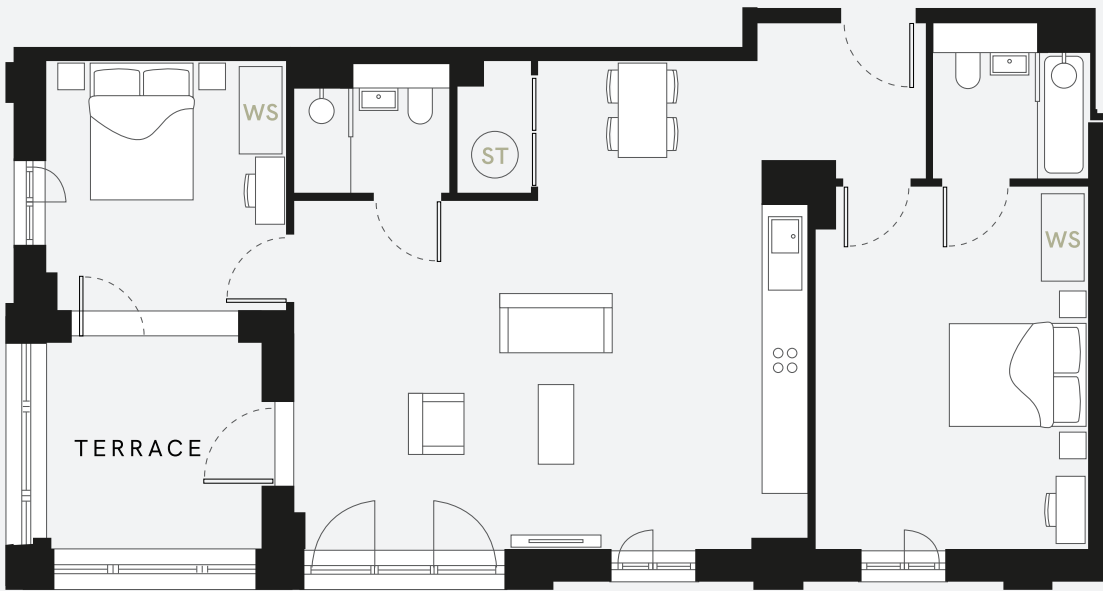
ST Store Cupboard / Water Cylinder
WS Wardrobe Space

LEVELS 02 TO 10

B25



2 BEDROOM



Living / Kitchen
6.94m x 4.72m 22.76ft x 15.48ft

Bedroom 1
4.90m x 3.71m 16.07ft x 12.17ft

Bedroom 2
3.34m x 3.24m 10.95ft x 10.62ft

Total Living Area
84.7m² 911.7ft²

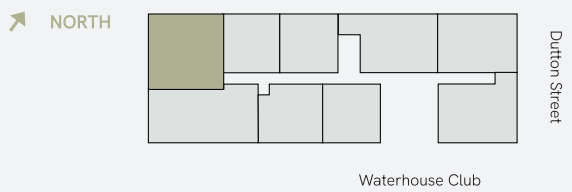
Terrace Size
6.5m² 70ft²

ST Store Cupboard / Water Cylinder
WS Wardrobe Space

Disclaimer: Blinds, curtains, curtain rails not included. Wardrobes not included indicative of space only. All dimensions are taken approximately from the middle of the room («»). Each layout may vary. All measurements may vary within the tolerance percentage agreed. The dimensions are not intended for use for carpet/ flooring sizes, appliances or furniture. Kitchen layout is indicative only and may be subject to change. Specification and finishes are subject to change if materials and appliances are discontinued or not readily available.

LEVELS 02 TO 10

B26



2 BEDROOM



Living / Kitchen
6.66m x 5.47m 21.85ft x 17.94ft

Bedroom 1
4.96m x 2.61m 16.27ft x 8.56ft

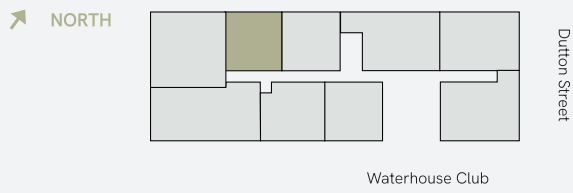
Bedroom 2
5.40m x 3.49m 17.71ft x 11.45ft

Total Living Area
85.5m² 920.3ft²

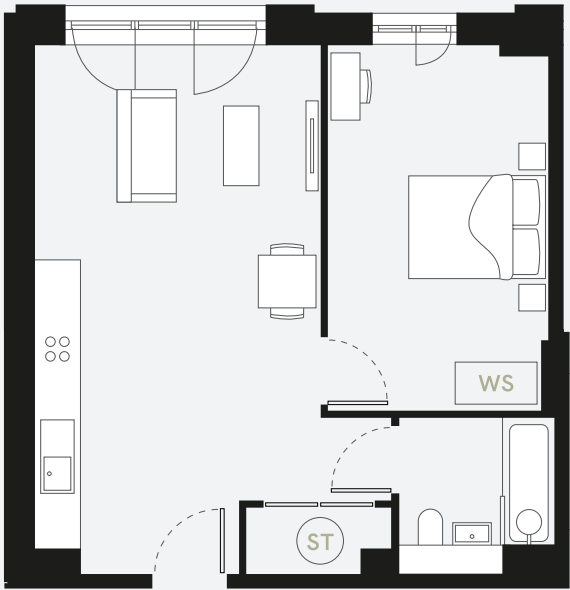
ST Store Cupboard / Water Cylinder
WS Wardrobe Space

LEVELS 02 TO 10

B27



1 BEDROOM



Living / Kitchen
7.16m x 4.87m 23.49ft x 15.97ft

Bedroom 1
4.95m x 2.99m 16.24ft x 9.80ft

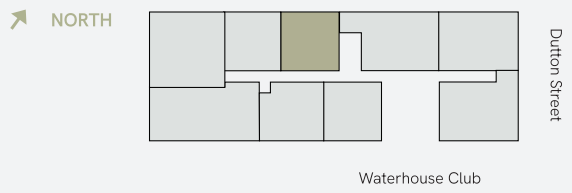
Total Living Area
50.2m² 540.3ft²

ST Store Cupboard / Water Cylinder
WS Wardrobe Space

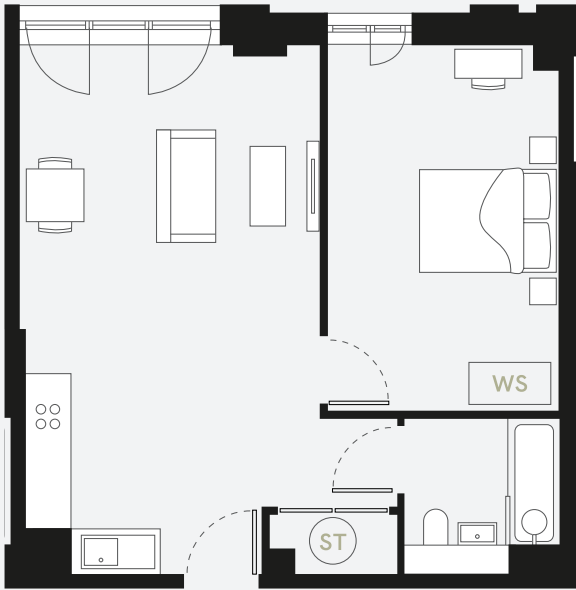
Disclaimer: Blinds, curtains, curtain rails not included. Wardrobes not included indicative of space only. All dimensions are taken approximately from the middle of the room («»). Each layout may vary. All measurements may vary within the tolerance percentage agreed. The dimensions are not intended for use for carpet/ flooring sizes, appliances or furniture. Kitchen layout is indicative only and may be subject to change. Specification and finishes are subject to change if materials and appliances are discontinued or not readily available.

LEVELS 02 TO 10

B28



1 BEDROOM

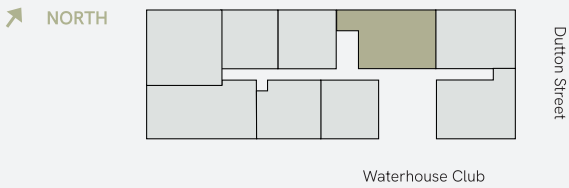


Living / Kitchen
7.15m x 5.02m 23.45ft x 16.46ft

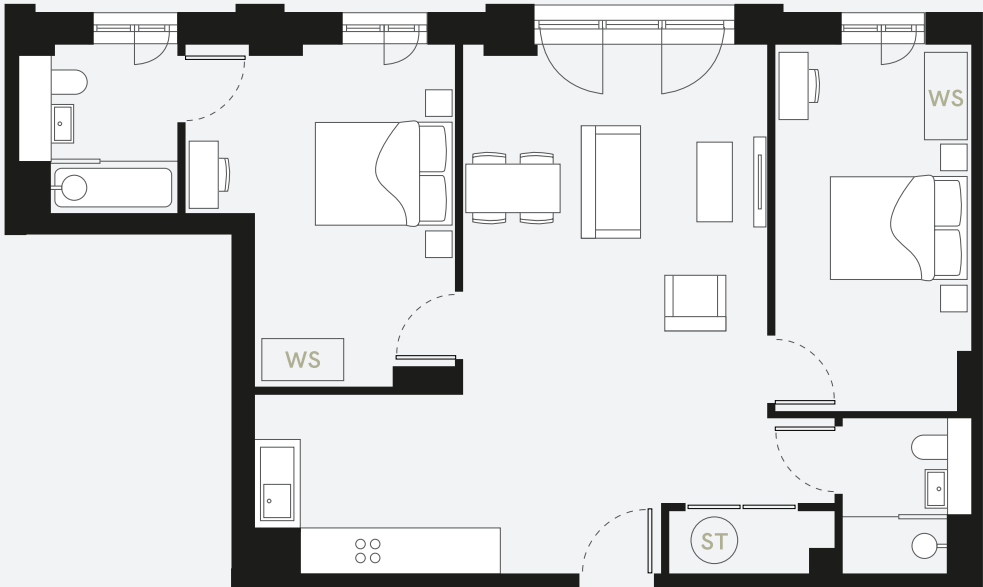
Bedroom 1
4.95m x 3.14m 16.24ft x 10.30ft

Total Living Area
52.1m² 560.7ft²

ST Store Cupboard / Water Cylinder
WS Wardrobe Space



2 BEDROOM



Living / Kitchen
7.87m x 7.16m 25.82ft x 23.49ft

Bedroom 1
4.95m x 2.65m 16.24ft x 8.69ft

Bedroom 2
4.63m x 3.63m 15.19ft x 11.90ft

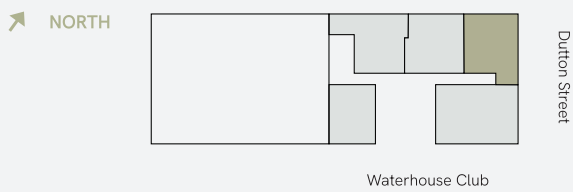
Total Living Area
76.8m² 826.6ft²

ST Store Cupboard / Water Cylinder
WS Wardrobe Space

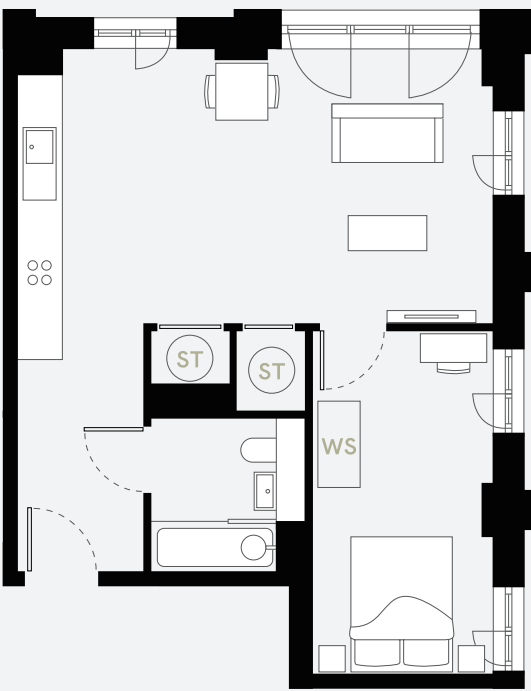
Disclaimer: Blinds, curtains, curtain rails not included. Wardrobes not included indicative of space only. All dimensions are taken approximately from the middle of the room (↔). Each layout may vary. All measurements may vary within the tolerance percentage agreed. The dimensions are not intended for use for carpet/flooring sizes, appliances or furniture. Kitchen layout is indicative only and may be subject to change. Specification and finishes are subject to change if materials and appliances are discontinued or not readily available.



**WATERHOUSE
GARDENS**



1 BEDROOM



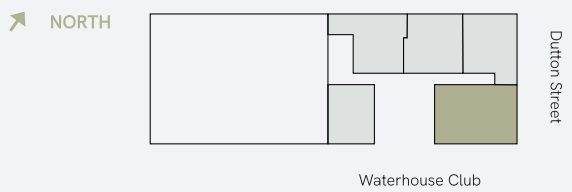
Living / Kitchen
7.16m x 6.52m 23.49ft x 21.39ft

Bedroom 1
4.70m x 2.47m 15.41ft x 8.10ft

Total Living Area
50.2m² 540.3ft²

ST Store Cupboard / Water Cylinder
WS Wardrobe Space

Disclaimer: Blinds, curtains, curtain rails not included. Wardrobes not included indicative of space only. All dimensions are taken approximately from the middle of the room («»). Each layout may vary. All measurements may vary within the tolerance percentage agreed. The dimensions are not intended for use for carpet/ flooring sizes, appliances or furniture. Kitchen layout is indicative only and may be subject to change. Specification and finishes are subject to change if materials and appliances are discontinued or not readily available.



2 BEDROOM



Living / Kitchen
7.16m x 3.64m 23.49ft x 11.94ft

Bedroom 1
3.66m x 3.61m 12.00ft x 11.84ft

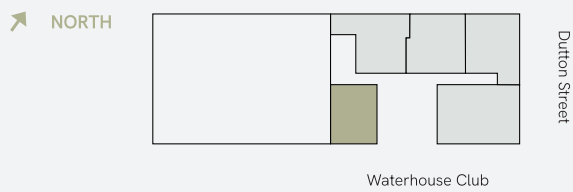
Bedroom 2
4.91m x 2.76m 16.10ft x 9.05ft

Total Living Area
71.4m² 768.5ft²

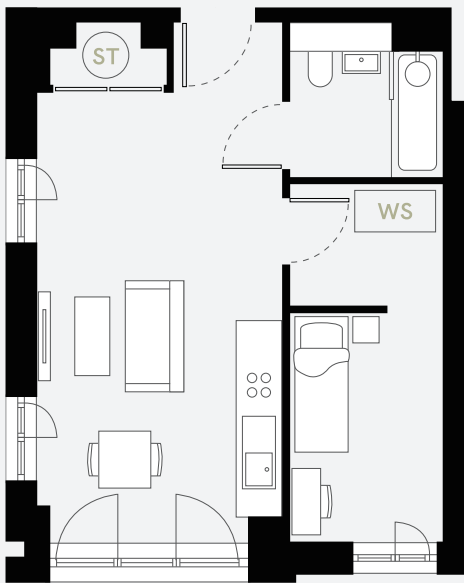
ST Store Cupboard / Water Cylinder
WS Wardrobe Space

LEVEL 11

B113



1 BEDROOM



Living / Kitchen
7.12m x 3.40m 23.35ft x 11.28ft

Bedroom 1
4.90m x 2.08m 16.07ft x 6.82ft

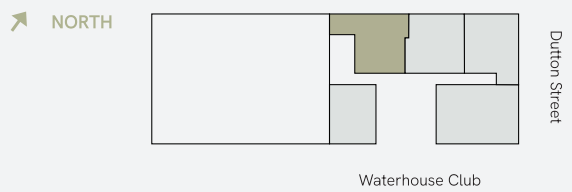
Total Living Area
39.8m² 428.4ft²

ST Store Cupboard / Water Cylinder
WS Wardrobe Space

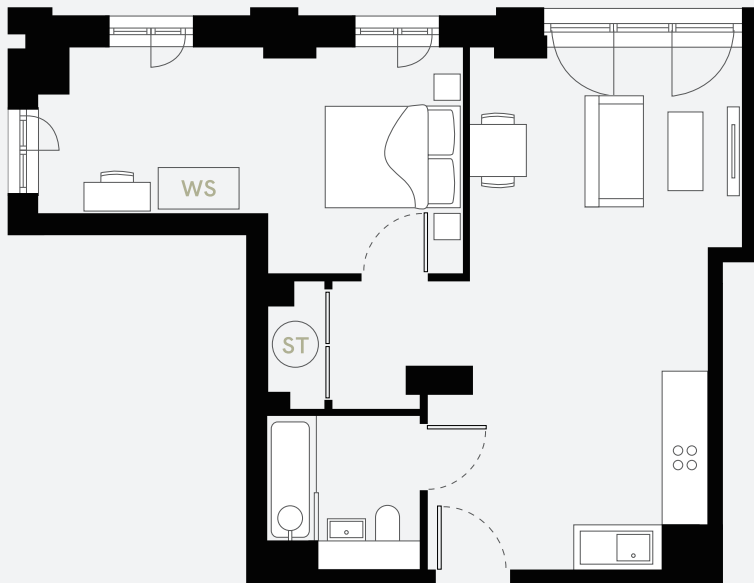
Disclaimer: Blinds, curtains, curtain rails not included. Wardrobes not included indicative of space only. All dimensions are taken approximately from the middle of the room (↔). Each layout may vary. All measurements may vary within the tolerance percentage agreed. The dimensions are not intended for use for carpet/ flooring sizes, appliances or furniture. Kitchen layout is indicative only and may be subject to change. Specification and finishes are subject to change if materials and appliances are discontinued or not readily available.

LEVEL 11

B114



1 BEDROOM



Living / Kitchen
7.16m x 3.73m 23.49ft x 12.23ft

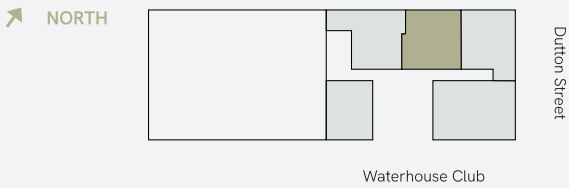
Bedroom 1
5.80m x 3.08m 19.02ft x 10.10ft

Total Living Area
51.6m² 555.4ft²

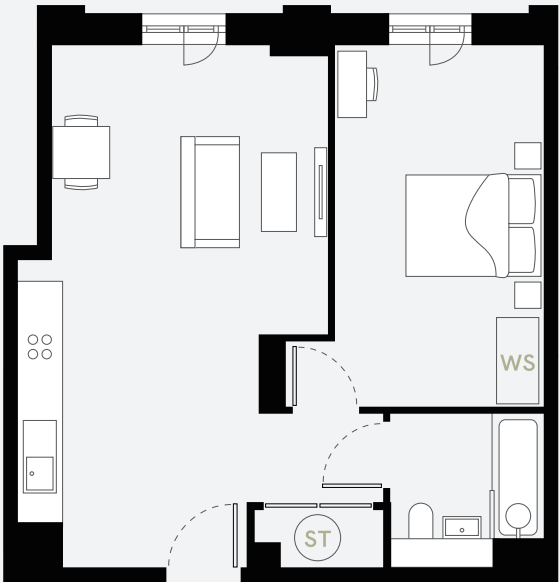
ST Store Cupboard / Water Cylinder
WS Wardrobe Space

LEVEL 11

B115



1 BEDROOM



Living / Kitchen
7.16m x 4.25m 23.49ft x 13.94ft

Total Living Area
50.3m² 541.4ft²

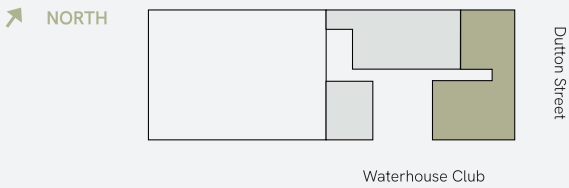
Bedroom 1
4.95m x 2.86m 16.24ft x 9.38ft

ST Store Cupboard / Water Cylinder
WS Wardrobe Space

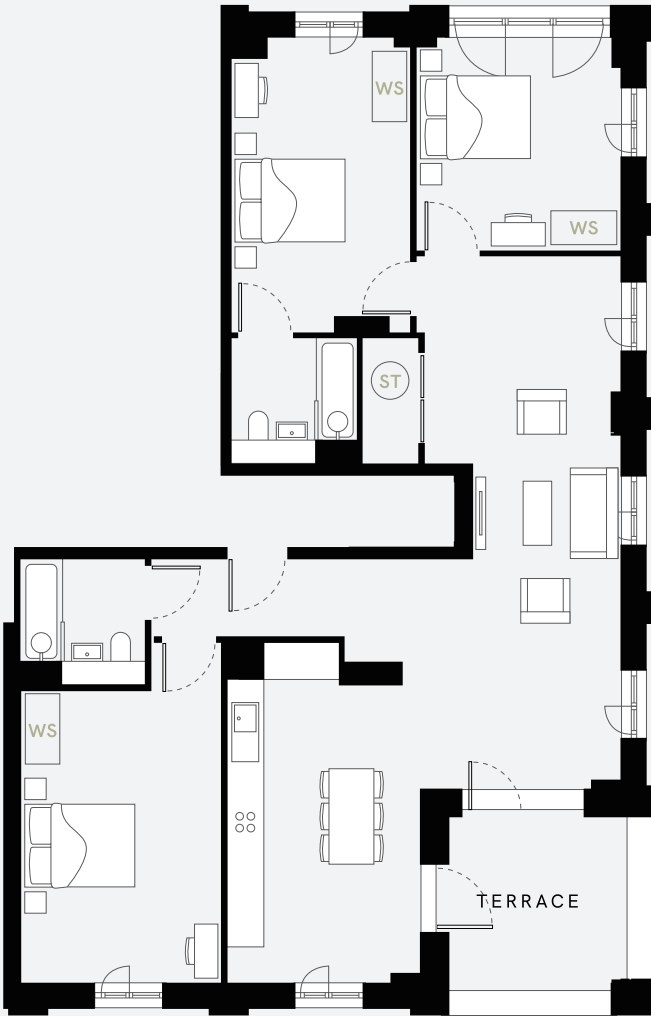
Disclaimer: Blinds, curtains, curtain rails not included. Wardrobes not included indicative of space only. All dimensions are taken approximately from the middle of the room (↔). Each layout may vary. All measurements may vary within the tolerance percentage agreed. The dimensions are not intended for use for carpet/flooring sizes, appliances or furniture. Kitchen layout is indicative only and may be subject to change. Specification and finishes are subject to change if materials and appliances are discontinued or not readily available.



WATERHOUSE
GARDENS



3 BEDROOM



Living / Kitchen
8.95m x 6.62m 29.36ft x 21.71ft

Bedroom 1
4.94m x 2.99m 16.20ft x 9.80ft

Bedroom 2
3.43m x 3.56m 11.25ft x 11.67ft

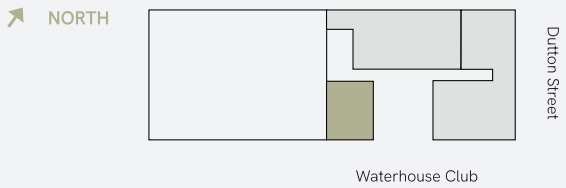
Bedroom 3
3.30m x 4.91m 10.82ft x 16.10ft

Total Living Area
111.2m² 1196.9ft²

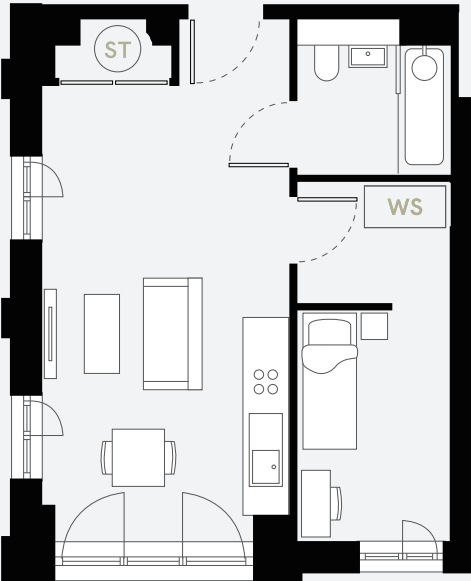
Terrace Size
9.5m² 102ft²

ST Store Cupboard / Water Cylinder
WS Wardrobe Space

Disclaimer: Blinds, curtains, curtain rails not included. Wardrobes not included indicative of space only. All dimensions are taken approximately from the middle of the room (↔). Each layout may vary. All measurements may vary within the tolerance percentage agreed. The dimensions are not intended for use for carpet/ flooring sizes, appliances or furniture. Kitchen layout is indicative only and may be subject to change. Specification and finishes are subject to change if materials and appliances are discontinued or not readily available.



1 BEDROOM

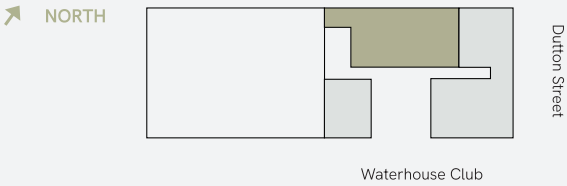


Living / Kitchen
7.12m x 3.33m 23.35ft x 10.92ft

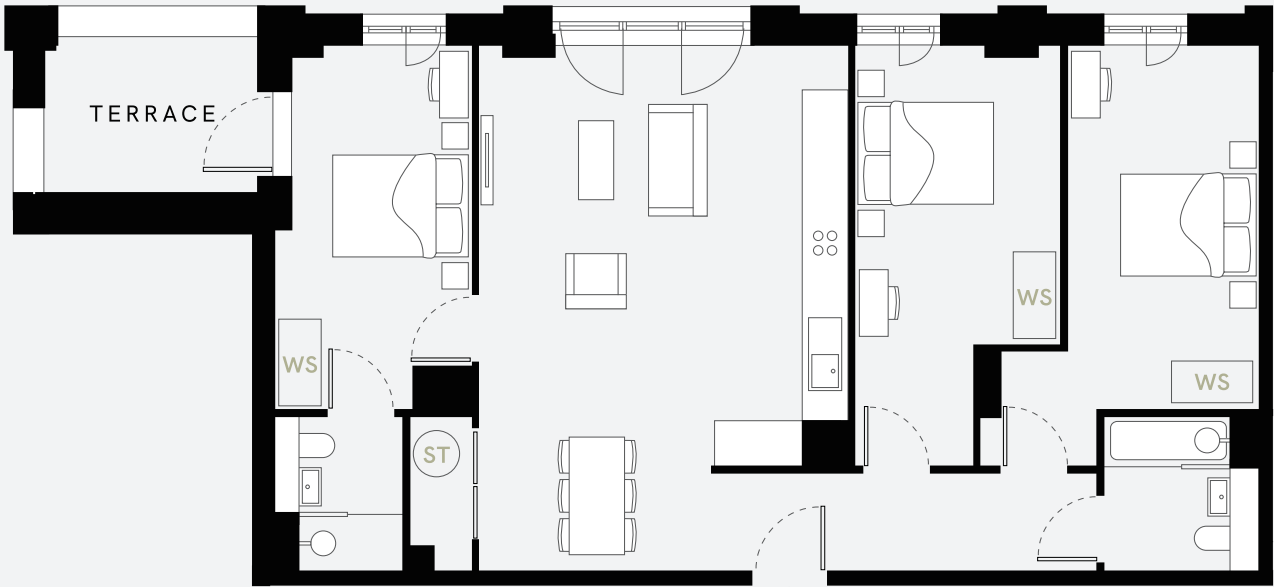
Bedroom 1
4.85m x 2.11m 15.91ft x 6.92ft

Total Living Area
39.8m² 428.4ft²

ST Store Cupboard / Water Cylinder
WS Wardrobe Space



3 BEDROOM



Living / Kitchen
7.16m x 5.02m 23.49ft x 16.46ft

Bedroom 1
4.96m x 2.70m 16.27ft x 8.55ft

Bedroom 2
5.72m x 2.81m 18.76ft x 9.21ft

Bedroom 3
4.95m x 2.60m 16.24ft x 8.53ft

Total Living Area
95.7m² 1030.1ft²

Terrace Size
6.5m² 70ft²

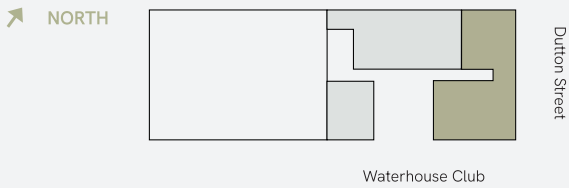
ST Store Cupboard / Water Cylinder
WS Wardrobe Space

Disclaimer: Blinds, curtains, curtain rails not included. Wardrobes not included indicative of space only. All dimensions are taken approximately from the middle of the room (↔). Each layout may vary. All measurements may vary within the tolerance percentage agreed. The dimensions are not intended for use for carpet/flooring sizes, appliances or furniture. Kitchen layout is indicative only and may be subject to change. Specification and finishes are subject to change if materials and appliances are discontinued or not readily available.

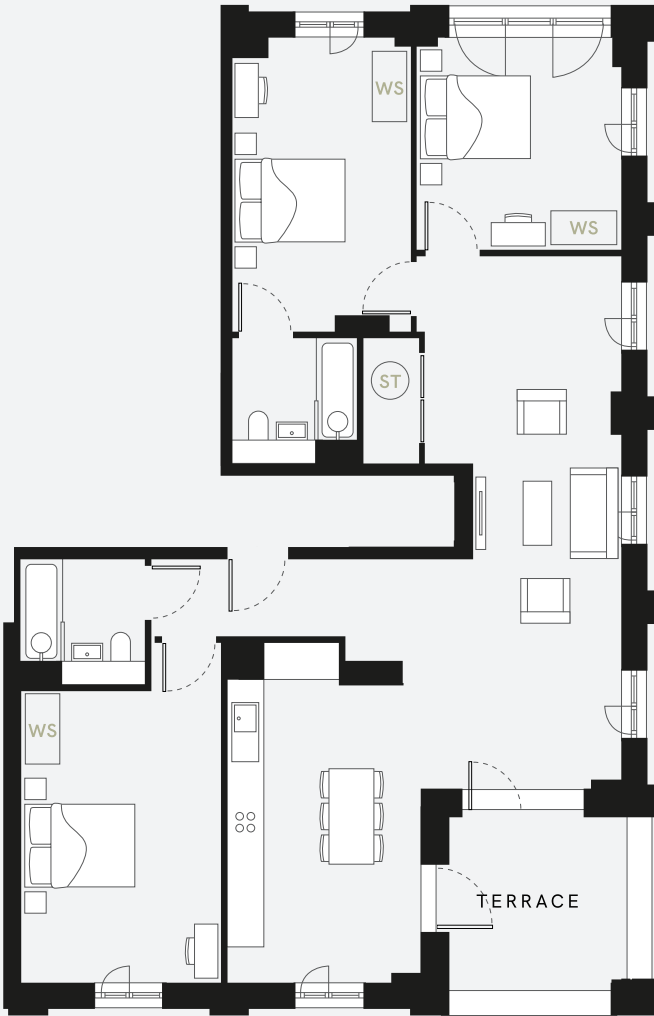


WATERHOUSE
GARDENS

B131



3 BEDROOM



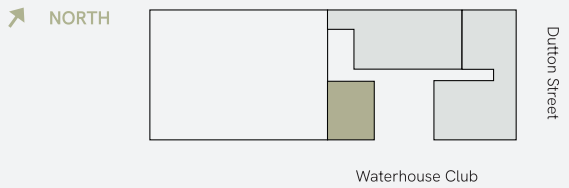
Living / Kitchen	
8.95m x 6.62m	29.36ft x 21.71ft
Bedroom 1	
3.53m x 3.43m	11.58ft x 11.25ft
Bedroom 2	
4.93m x 2.99m	16.17ft x 9.80ft
Bedroom 3	
4.91m x 3.30m	16.10ft x 10.82ft

Total Living Area	
111.2m²	1196.9ft²
Terrace Size	
9.5m²	102ft²

ST Store Cupboard / Water Cylinder
WS Wardrobe Space

Disclaimer: Blinds, curtains, curtain rails not included. Wardrobes not included indicative of space only. All dimensions are taken approximately from the middle of the room (↔). Each layout may vary. All measurements may vary within the tolerance percentage agreed. The dimensions are not intended for use for carpet/ flooring sizes, appliances or furniture. Kitchen layout is indicative only and may be subject to change. Specification and finishes are subject to change if materials and appliances are discontinued or not readily available.

B132



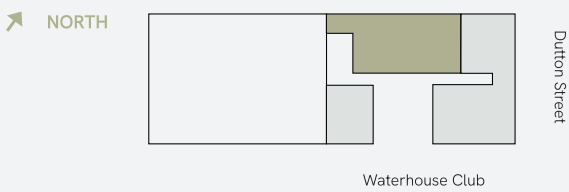
2 BEDROOM



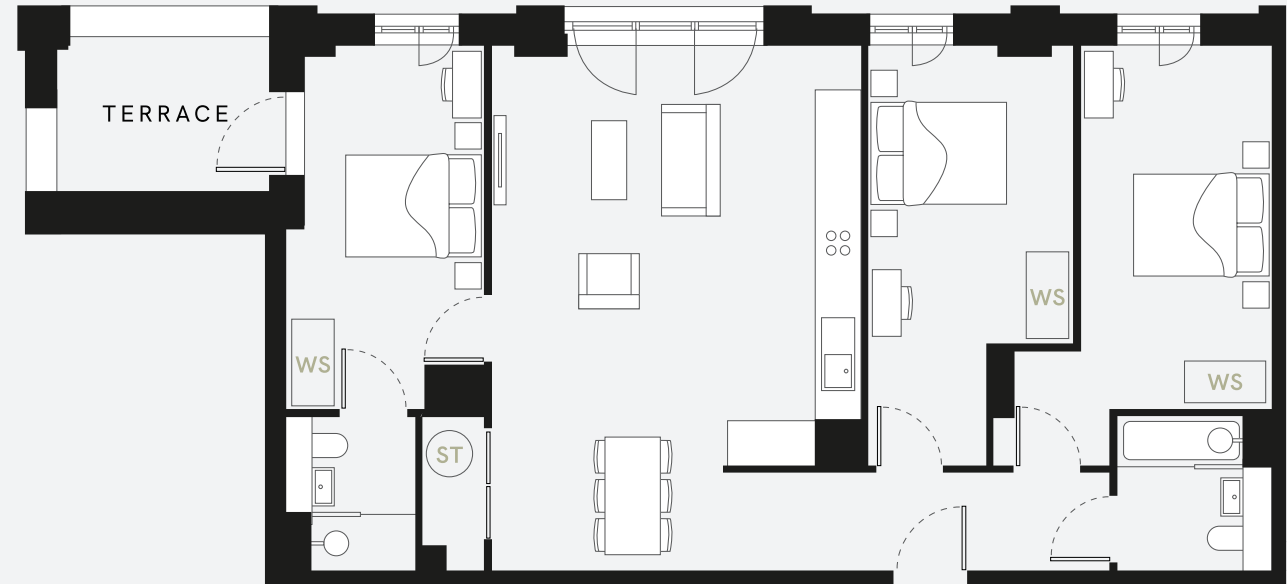
Living / Kitchen	
5.85m x 5.54m	19.19ft x 18.17ft
Bedroom 1	
5.58m x 2.94m	18.30ft x 9.64ft
Bedroom 2	
4.07m x 1.95m	13.35ft x 6.39ft

Total Living Area	
79.6m²	857ft²

ST Store Cupboard / Water Cylinder
WS Wardrobe Space



3 BEDROOM



Living / Kitchen
7.16m x 5.02m 23.49ft x 16.46ft

Bedroom 1
4.96m x 2.70m 16.27ft x 8.85ft

Bedroom 2
5.72m x 2.81m 18.76ft x 9.21ft

Bedroom 3
4.95m x 2.60m 16.24ft x 8.53ft

Total Living Area
95.7m² 1030.1ft²

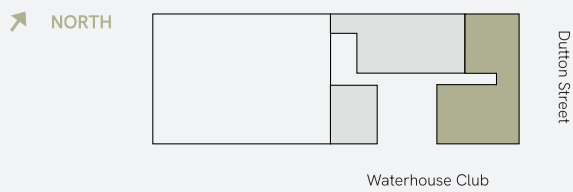
Terrace Size
6.5m² 70ft²

ST Store Cupboard / Water Cylinder
WS Wardrobe Space

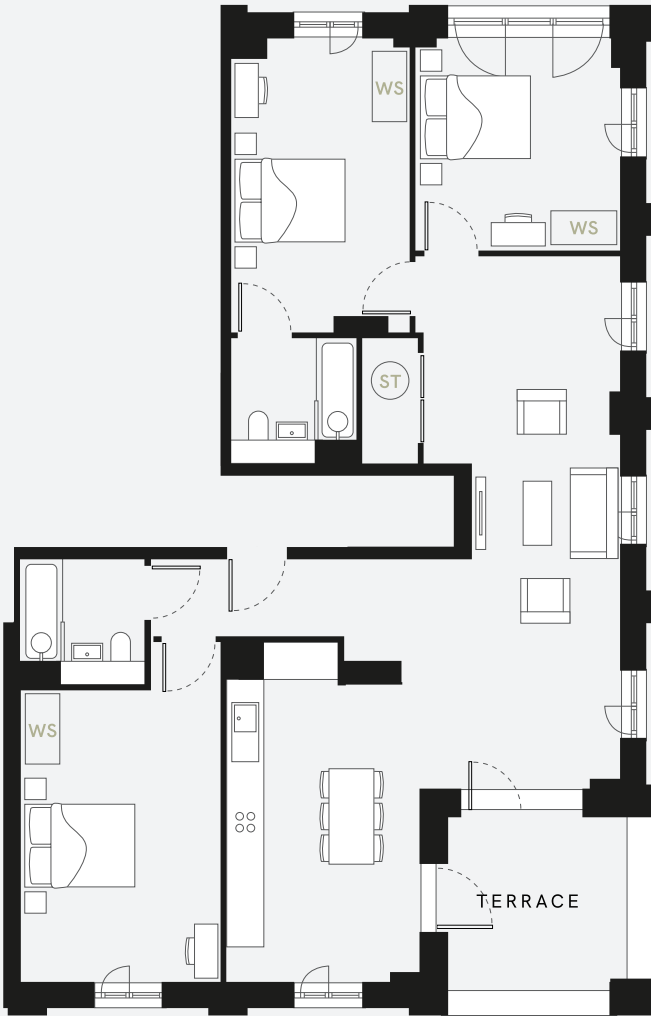
Disclaimer: Blinds, curtains, curtain rails not included. Wardrobes not included indicative of space only. All dimensions are taken approximately from the middle of the room (↔). Each layout may vary. All measurements may vary within the tolerance percentage agreed. The dimensions are not intended for use for carpet/flooring sizes, appliances or furniture. Kitchen layout is indicative only and may be subject to change. Specification and finishes are subject to change if materials and appliances are discontinued or not readily available.



**WATERHOUSE
GARDENS**



3 BEDROOM

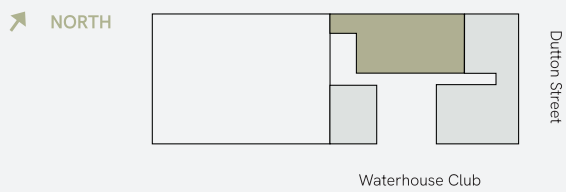


Living / Kitchen	
8.95m x 6.66m	29.36ft x 21.85ft
Bedroom 1	
3.57m x 3.47m	11.71ft x 11.38ft
Bedroom 2	
4.95m x 2.95m	16.24ft x 9.67ft
Bedroom 3	
4.91m x 3.26m	16.10ft x 10.69ft

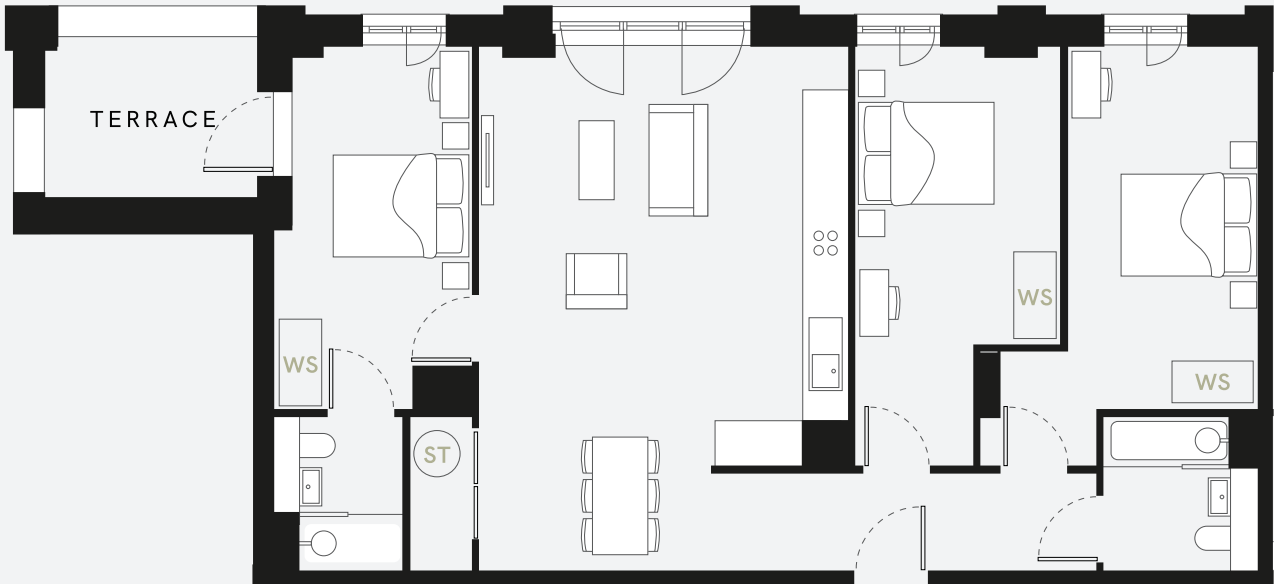
Total Living Area	
111.2m²	1196.9ft²
Terrace Size	
9.5m²	102ft²

- ST Store Cupboard / Water Cylinder
- WS Wardrobe Space

Disclaimer: Blinds, curtains, curtain rails not included. Wardrobes not included indicative of space only. All dimensions are taken approximately from the middle of the room (↔). Each layout may vary. All measurements may vary within the tolerance percentage agreed. The dimensions are not intended for use for carpet/ flooring sizes, appliances or furniture. Kitchen layout is indicative only and may be subject to change. Specification and finishes are subject to change if materials and appliances are discontinued or not readily available.



3 BEDROOM



Living / Kitchen	
7.16m x 5.02m	23.49ft x 16.46ft
Bedroom 1	
4.96m x 2.70m	16.27ft x 8.85ft
Bedroom 2	
5.72m x 2.81m	18.76ft x 9.21ft
Bedroom 3	
4.95m x 2.60m	16.24ft x 8.53ft

Total Living Area	
95.7m²	1030.1ft²
Terrace Size	
6.5m²	70ft²

- ST Store Cupboard / Water Cylinder
- WS Wardrobe Space

THE RESIDENCES

Specifications

RESIDENT AMENITIES

- Concierge
- Parcel store
- Cycle Store
- Swimming pools
- Private landscaped garden
- Squash and basketball courts
- Games room
- Private dining
- Cinema room
- Meeting room
- Work spaces
- Lounges

PUBLIC AMENITIES

A new public avenue with shops, restaurants and office space

FLOORING

- Laminate wood flooring in bedroom, lounge and kitchen
- Porcelain tiling in bathroom and ensuite

KITCHENS

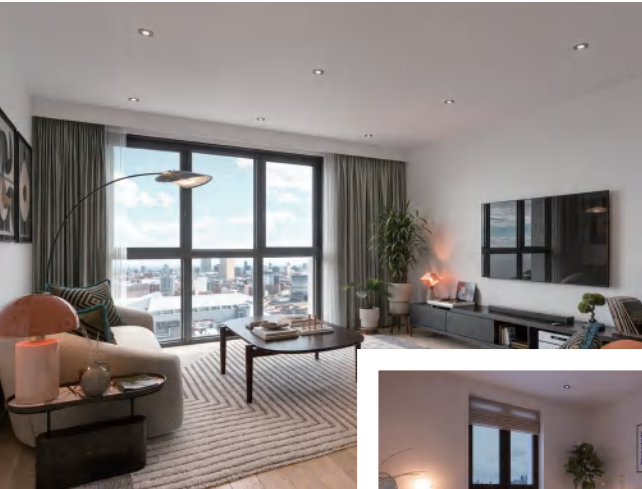
- Oversize full height kitchen wall units
- LED strip downlighting
- Quartz worktops & splashback
- Ceramic induction hob with extractor hood
- Fully-integrated dishwasher
- Fully-integrated oven
- Fully-integrated 70/30 split fridge/freezer
- Free-standing washer/dryer in storage cupboard
- Black stainless steel sink and mixer tap

BATHROOMS

- Backlit heated mirror cabinet
- WC and basin
- Quartz vanity unit
- Porcelain tiling
- Black mixer taps and shower head
- Black heated towel rail

HEATING & ELECTRICAL

- Wall-mounted electric panel heaters - WIFI enabled
- Integrated TV/reception system
- Entrance access system, controlled via app
- Fire alarms & sprinklers
- High speed internet access
- Power outlets



Notes: The design development of Waterhouse Gardens is still ongoing and certain items of the specification may be amended to an item of equivalent quality.



T & C 'S

Salboy International Ltd on behalf of Waterhouse Gardens gives notice to anyone who may read these particulars as follows: 1. These particulars are prepared for the guidance only of prospective purchasers. They are intended to give a fair overall description of the property but are not intended to constitute part of an offer or contract. 2. Any information contained herein (whether in the text, plans or photographs) is given in good faith but should not be relied upon as being a statement or representation of fact. 3. Nothing in these particulars shall be deemed to be a statement that the property is in good condition or otherwise nor that any services or facilities are in good working order. 4. The photographs appearing in this brochure show only certain parts and aspects of the property at the time when the photographs were taken. Certain aspects may have changed since the photographs were taken and it should not be assumed that the property remains precisely as displayed in the photographs. Furthermore no assumptions should be made in respect of parts of the property which are not shown in the photographs. 5. Any areas, measurements or distances referred to herein are approximate only. 6. Where there is reference in these particulars to the fact that alterations have been carried out or that a particular use is made of any part of the property this is not intended to be a statement that any necessary planning, building regulations or other consents have been obtained and these matters must be verified by any intending purchaser. 7. Descriptions of a property are inevitably subjective and the descriptions contained herein are used in good faith as an opinion and not by way of statement of fact. Published June 2024, Salboy.co.uk. 8 All images used are for illustrative purposes only. These and the dimensions given are illustrative for this house type and individual properties may differ, in particular, final elevations of the property purchased may differ from those shown.