

T I B H O U S E

WATERHOUSE GARDENS



04

ABOUT TIB HOUSE

06/09

WATERHOUSE CLUB

10/17

THE APARTMENTS

18/41

GROUND TO LEVEL 01

42/53

LEVELS 02 TO 10

54

SPECIFICATION



WELCOME TO
TIB HOUSE AT WATERHOUSE
GARDENS

The Tib House residences include 1 and 2 bedroom apartments, duplex townhouses and penthouses. From a fresh colour palette to top-quality fittings and considerable natural light, these homes are designed to create a contemporary and elegant feel.

With direct access to The Waterhouse Club, residents benefit from the private amenities curated for an elevated, modern lifestyle.

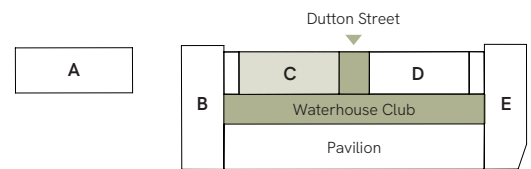


WATERHOUSE CLUB

Amenities

ON YOUR DOORSTEP

The Waterhouse Club is home to a collection of amenities that sets a new benchmark for health and leisure, from your doorstep. A club that promotes wellness and community, every facility has been designed with style, functionality and wellbeing in mind.





Work

CO-WORKING

The co-working space and library lounge is a welcoming but practical space designed to fulfil the requirements of modern, hybrid working.



Entertain

CINEMA & DINING

The cinema room is available for residents to hire for an immersive, private cinema experience, whilst the private dining room provides a more intimate setting to entertain family and friends.



Get Fit

GYMNASIUM

A fully equipped gymnasium and fitness studio is designed to help residents achieve their exercise goals.



Play

GAMES ROOM

The games area is ideal for those looking to socialise and participate in some good-natured competition with family, friends and neighbours.



Challenge

BASKETBALL & SQUASH

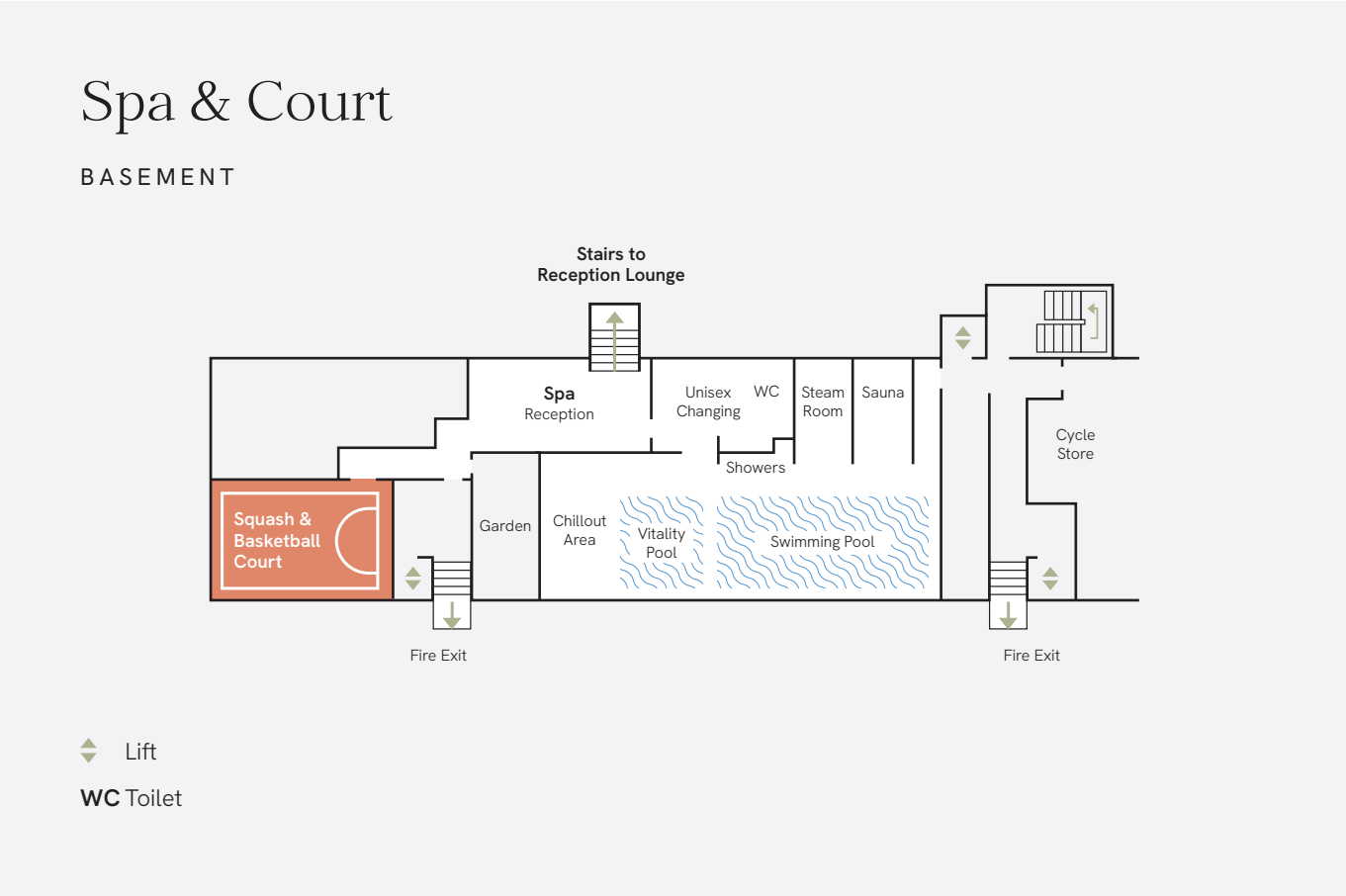
A half-size basketball and squash court allows for residents to let off steam and play sports in style.



Relax

SWIMMING POOL

A swimming pool and spa equipped with a cold plunge pool, experience shower, steam room and sauna, create a serene environment for residents to unwind and recuperate.





TIB HOUSE

The Apartments

HOTEL LIKE LIVING

Apartment layouts and interiors are spacious, contemporary and adaptable. Sophistication meets comfort in every detail.



THE RESIDENCES

Kitchen

The kitchen boasts bespoke cabinetry with gloss finishes, integrated modern appliances, and warm-toned lighting.



THE RESIDENCES

Living space

Carefully designed,
living spaces are
bright, spacious
and adaptable.



THE RESIDENCES

Bedroom

Warm and inviting, the bedroom offers a luxury sanctuary for rest and relaxation.



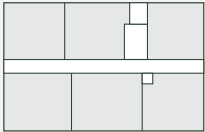
THE RESIDENCES

Bathroom

Crafted with the finest fixtures, tiling and cabinetry each bathroom and en-suite offers a space for residents to refresh and unwind.

GROUND TO LEVEL 01
FLOOR PLANS

Townhouses



GROUND LEVEL

DUTTON STREET



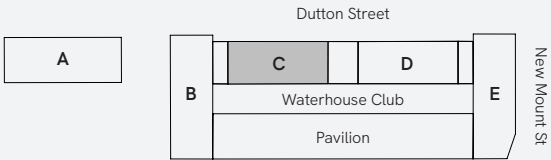
◆ Lift

PG Private Garden

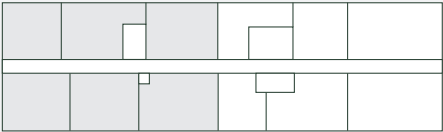
PODIUM

1 BEDROOM 2 BEDROOM 3 BEDROOM TOWN HOUSES

Disclaimer: Blinds, curtains, curtain rails not included. Wardrobes not included indicative of space only. All dimensions are taken approximately from the middle of the room (↔). Each layout may vary. All measurements may vary within the tolerance percentage agreed. The dimensions are not intended for use for carpet/ flooring sizes, appliances or furniture. Kitchen layout is indicative only and may be subject to change. Specification and finishes are subject to change if materials and appliances are discontinued or not readily available.



▲ NORTH



LEVEL 01






Apartment Locator
How to identify your apartment number

Block	Level	Unit	=	Postal Number
C	1	1	=	C11
C	10	2	=	C102

Full floor plate



◆ Lift

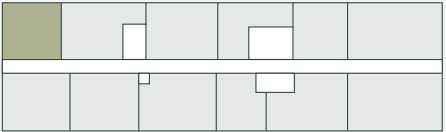
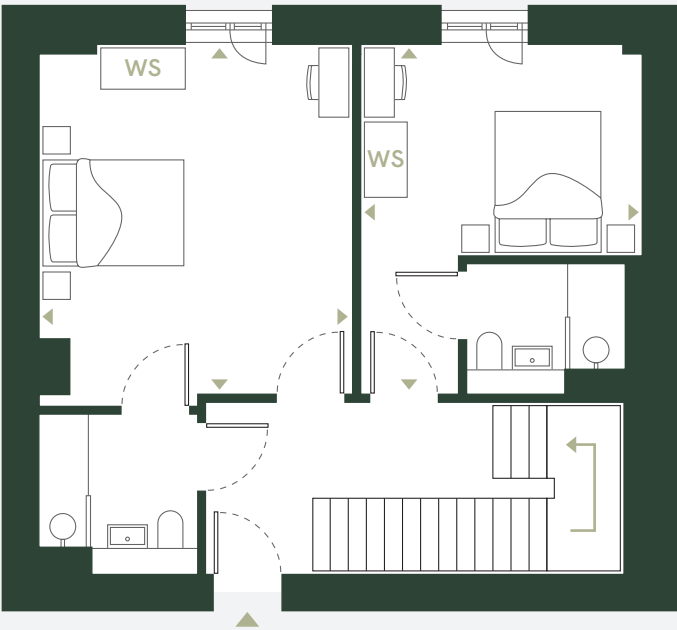
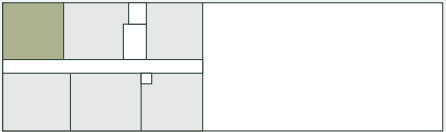
-  1 BEDROOM
-  2 BEDROOM
-  3 BEDROOM TOWN HOUSES

Apartment Locator

How to identify your apartment number

Block	Level	Unit	=	Postal Number
C	1	1	=	C11
C	10	2	=	C102

Disclaimer: Blinds, curtains, curtain rails not included. Wardrobes not included indicative of space only. All dimensions are taken approximately from the middle of the room (↔). Each layout may vary. All measurements may vary within the tolerance percentage agreed. The dimensions are not intended for use for carpet/ flooring sizes, appliances or furniture. Kitchen layout is indicative only and may be subject to change. Specification and finishes are subject to change if materials and appliances are discontinued or not readily available.

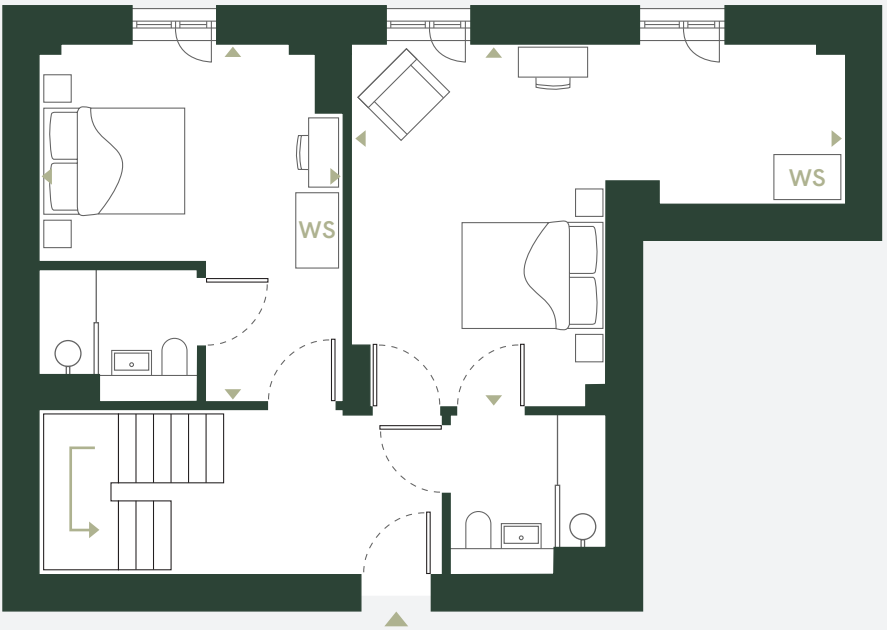
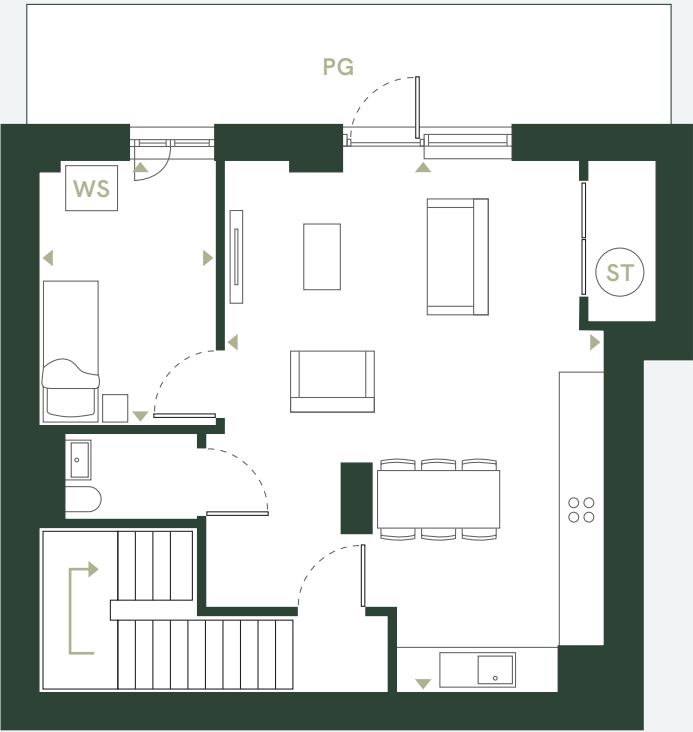


Disclaimer: Blinds, curtains, curtain rails not included. Wardrobes not included indicative of space only. All dimensions are taken approximately from the middle of the room (◄►). Each layout may vary. All measurements may vary within the tolerance percentage agreed. The dimensions are not intended for use for carpet/ flooring sizes, appliances or furniture. Kitchen layout is indicative only and may be subject to change. Specification and finishes are subject to change if materials and appliances are discontinued or not readily available.

Living / Kitchen	
7.03m x 5.03m	23.06ft x 16.50ft
Bedroom 1	
3.45m x 2.71m	11.32ft x 8.89ft
Bedroom 2	
4.66m x 4.15m	15.29ft x 13.62ft
Bedroom 3	
4.66m x 3.72m	15.29ft x 12.20ft

Ground Level Area	
54.7m ²	588.8ft ²
Level 1 Area	
55.6m ²	598.5ft ²

- ◄► Measurement Points
- ST Store Cupboard / Water Cylinder
- WS Wardrobe Space
- PG Private Garden

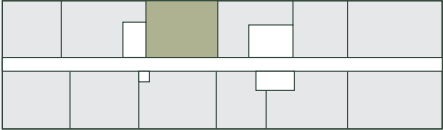
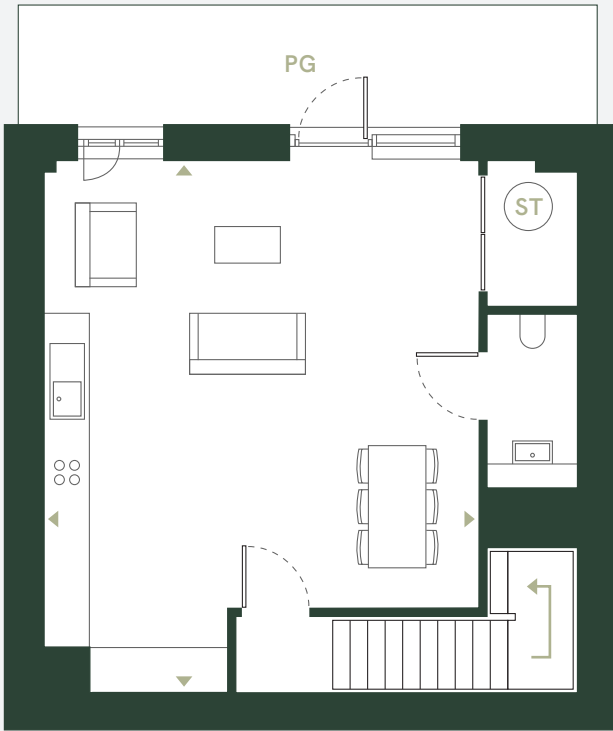
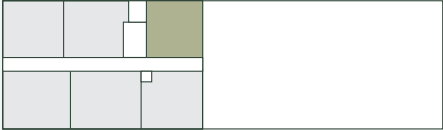


Disclaimer: Blinds, curtains, curtain rails not included. Wardrobes not included indicative of space only. All dimensions are taken approximately from the middle of the room (↔). Each layout may vary. All measurements may vary within the tolerance percentage agreed. The dimensions are not intended for use for carpet/ flooring sizes, appliances or furniture. Kitchen layout is indicative only and may be subject to change. Specification and finishes are subject to change if materials and appliances are discontinued or not readily available.

Living / Kitchen	
7.03m x 5.27m	23.06ft x 17.29ft
Bedroom 1	
3.51m x 2.35m	11.52ft x 7.71ft
Bedroom 2	
6.54m x 4.82m	21.46ft x 15.81ft
Bedroom 3	
4.75m x 4.03m	15.59ft x 13.22ft

Ground Level Area	
54.2m ²	583.4ft ²
Level 1 Area	
59.6m ²	641.5ft ²

- ↔ Measurement Points
- ST Store Cupboard / Water Cylinder
- WS Wardrobe Space
- PG Private Garden



Living / Kitchen

7.04m x 5.75m 23.10 x 18.86ft

Bedroom 1

5.19m x 2.69m 17.03ft x 8.83ft

Bedroom 2

4.82m x 3.54m 15.81ft x 11.61ft

Bedroom 3

3.47m x 3.24m 11.38ft x 10.63ft

Ground Level Area

49.7m² 535.0ft²

Level 1 Area

68.1m² 733.0ft²

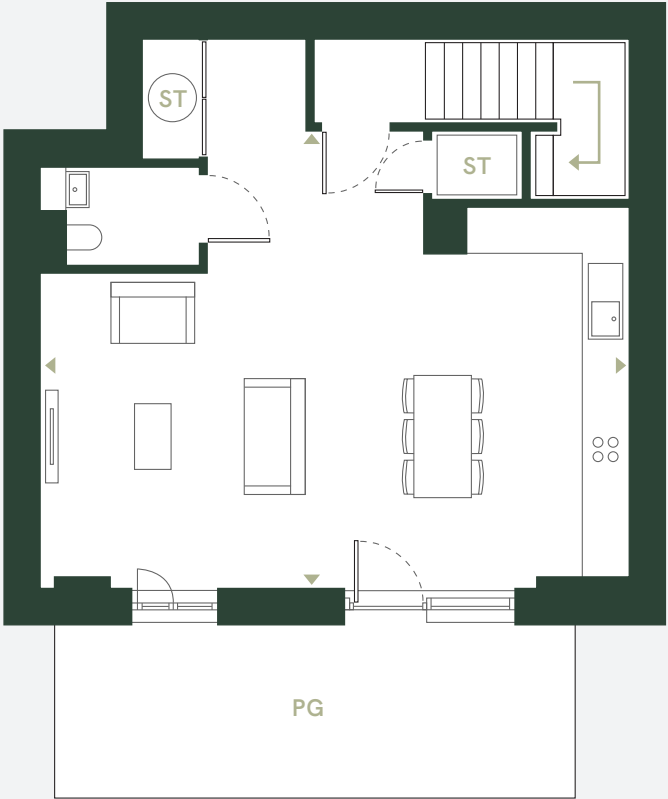
◄► Measurement Points

ST Store Cupboard / Water Cylinder

WS Wardrobe Space

PG Private Garden

Disclaimer: Blinds, curtains, curtain rails not included. Wardrobes not included indicative of space only. All dimensions are taken approximately from the middle of the room (◄►). Each layout may vary. All measurements may vary within the tolerance percentage agreed. The dimensions are not intended for use for carpet/ flooring sizes, appliances or furniture. Kitchen layout is indicative only and may be subject to change. Specification and finishes are subject to change if materials and appliances are discontinued or not readily available.



Disclaimer: Blinds, curtains, curtain rails not included. Wardrobes not included indicative of space only. All dimensions are taken approximately from the middle of the room (◀▶). Each layout may vary. All measurements may vary within the tolerance percentage agreed. The dimensions are not intended for use for carpet/ flooring sizes, appliances or furniture. Kitchen layout is indicative only and may be subject to change. Specification and finishes are subject to change if materials and appliances are discontinued or not readily available.

Living / Kitchen

7.77m x 6.05m 25.49ft x 19.85ft

Bedroom 1

5.52m x 3.09m 18.11ft x 10.14ft

Bedroom 2

5.05m x 3.12m 16.57ft x 10.24ft

Bedroom 3

3.85m x 3.82m 12.63ft x 12.53ft

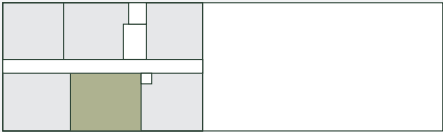
Ground Level Area

54.8m² 589.9ft²

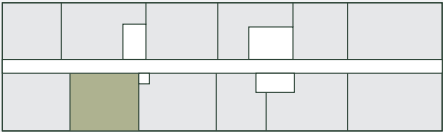
Level 1 Area

72.5m² 780.4ft²

- ◀▶ Measurement Points
- ST Store Cupboard / Water Cylinder
- WS Wardrobe Space
- PG Private Garden



3 BEDROOM TOWN HOUSE



Living / Kitchen

9.12m x 7.26m 29.92ft x 23.82ft

Bedroom 1

5.04m x 3.26m 16.54ft x 10.70ft

Bedroom 2

5.04m x 2.85m 16.54ft x 9.35ft

Bedroom 3

5.04m x 2.80m 16.54ft x 9.19ft

Ground Level Area

66.2m² 712.6ft²

Level 1 Area

66.2m² 712.6ft²

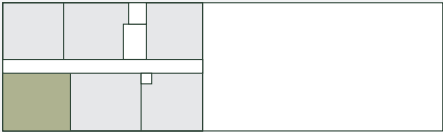
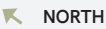
◄► Measurement Points

ST Store Cupboard / Water Cylinder

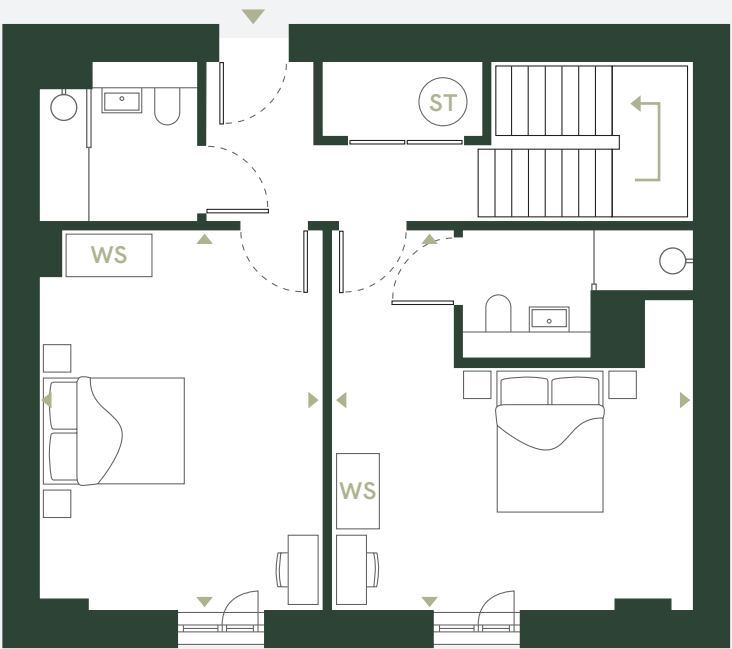
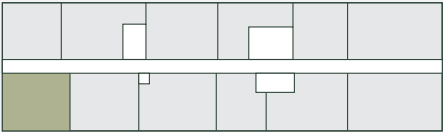
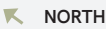
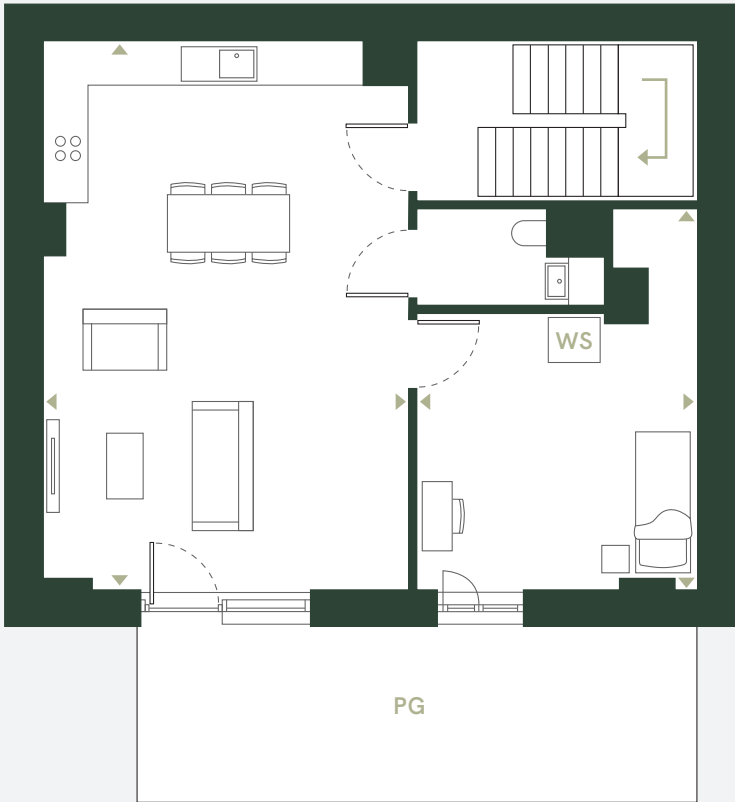
WS Wardrobe Space

PG Private Garden

Disclaimer: Blinds, curtains, curtain rails not included. Wardrobes not included indicative of space only. All dimensions are taken approximately from the middle of the room (◄►). Each layout may vary. All measurements may vary within the tolerance percentage agreed. The dimensions are not intended for use for carpet/ flooring sizes, appliances or furniture. Kitchen layout is indicative only and may be subject to change. Specification and finishes are subject to change if materials and appliances are discontinued or not readily available.



3 BEDROOM TOWN HOUSE



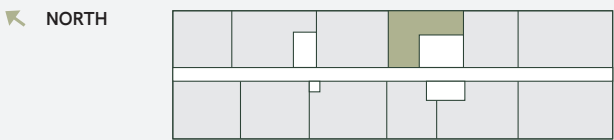
Disclaimer: Blinds, curtains, curtain rails not included. Wardrobes not included indicative of space only. All dimensions are taken approximately from the middle of the room (◄►). Each layout may vary. All measurements may vary within the tolerance percentage agreed. The dimensions are not intended for use for carpet/ flooring sizes, appliances or furniture. Kitchen layout is indicative only and may be subject to change. Specification and finishes are subject to change if materials and appliances are discontinued or not readily available.

Living / Kitchen	
7.26m x 4.83m	23.82ft x 15.85ft
Bedroom 1	
5.04m x 3.72m	16.54ft x 12.20ft
Bedroom 2	
5.04m x 4.79m	16.54ft x 15.72ft
Bedroom 3	
5.04m x 3.76m	16.54ft x 12.34ft

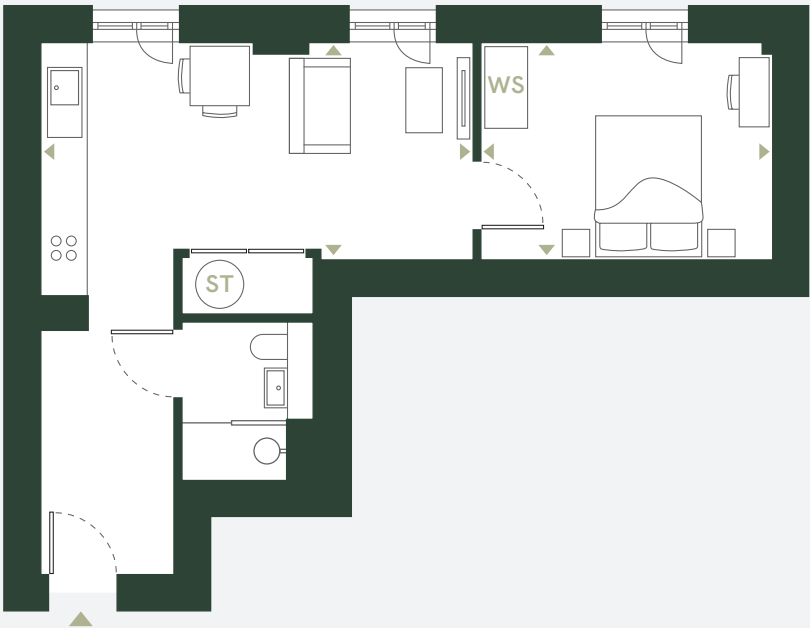
Ground Level Area	
62.9m ²	677.1ft ²
Level 1 Area	
62.9m ²	677.1ft ²

- ◄► Measurement Points
- ST Store Cupboard / Water Cylinder
- WS Wardrobe Space
- PG Private Garden

C11



1 BEDROOM

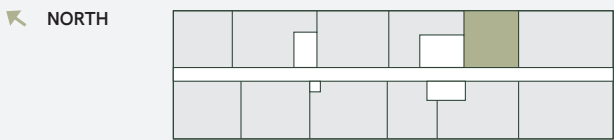


Living / Kitchen		Area	
5.72m x 2.88m	18.77ft x 9.45ft		
Bedroom 1		40.6m ²	437.0ft ²
3.86m x 2.88m	12.66ft x 9.45ft		

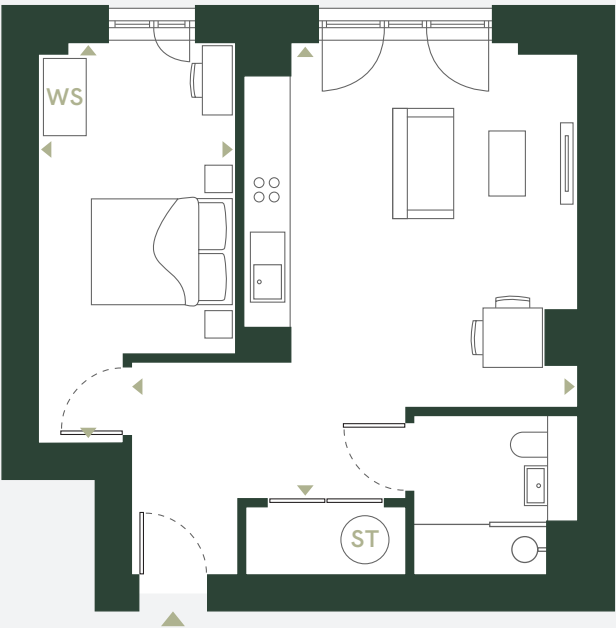
- ◀▶ Measurement Points
- ST Store Cupboard / Water Cylinder
- WS Wardrobe Space

Disclaimer: Blinds, curtains, curtain rails not included. Wardrobes not included indicative of space only. All dimensions are taken approximately from the middle of the room (◀▶). Each layout may vary. All measurements may vary within the tolerance percentage agreed. The dimensions are not intended for use for carpet/ flooring sizes, appliances or furniture. Kitchen layout is indicative only and may be subject to change. Specification and finishes are subject to change if materials and appliances are discontinued or not readily available.

C12



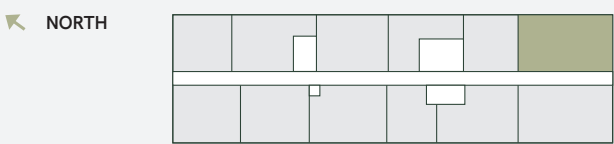
1 BEDROOM



Living / Kitchen		Area	
6.04m x 5.91m	19.82ft x 19.39ft		
Bedroom 1		48.1m ²	517.7ft ²
5.30m x 2.61m	17.39ft x 8.56ft		

- ◀▶ Measurement Points
- ST Store Cupboard / Water Cylinder
- WS Wardrobe Space

C13



2 BEDROOM

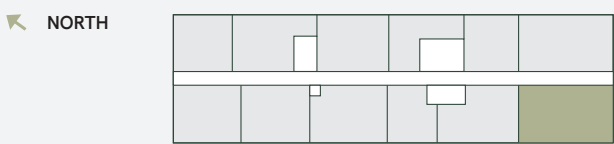


Living / Kitchen		Area	
7.03m x 4.72m	23.06ft x 15.49ft	84.0m ²	904.2ft ²
Bedroom 1			
5.19m x 3.16m	17.03ft x 10.37ft		
Bedroom 2			
4.83m x 3.83m	15.85ft x 12.57ft		

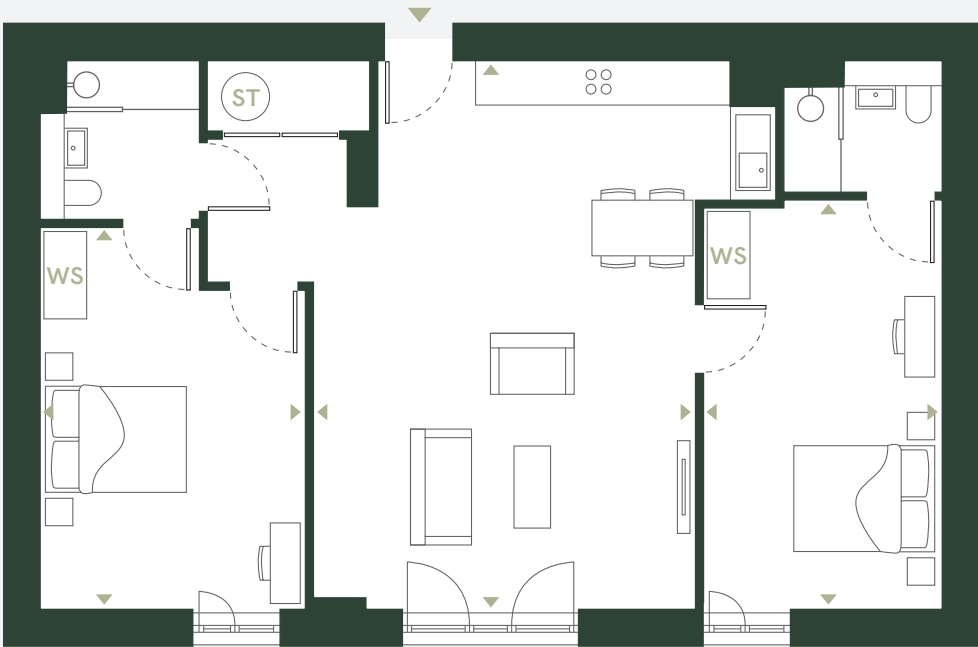
- ◄► Measurement Points
- ST Store Cupboard / Water Cylinder
- WS Wardrobe Space

Disclaimer: Blinds, curtains, curtain rails not included. Wardrobes not included indicative of space only. All dimensions are taken approximately from the middle of the room (◄►). Each layout may vary. All measurements may vary within the tolerance percentage agreed. The dimensions are not intended for use for carpet/ flooring sizes, appliances or furniture. Kitchen layout is indicative only and may be subject to change. Specification and finishes are subject to change if materials and appliances are discontinued or not readily available.

C14



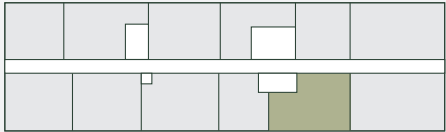
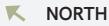
2 BEDROOM



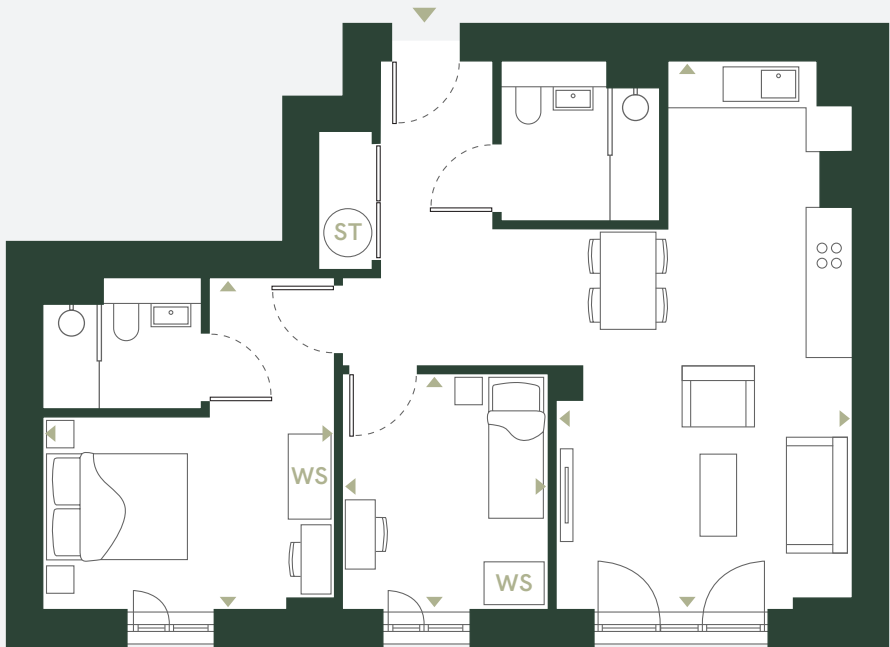
Living / Kitchen		Area	
7.25m x 5.05m	23.79ft x 16.57ft	86.3m ²	928.9ft ²
Bedroom 1			
5.41m x 3.16m	17.75ft x 10.37ft		
Bedroom 2			
5.05m x 3.51m	16.57ft x 11.52ft		

- ◄► Measurement Points
- ST Store Cupboard / Water Cylinder
- WS Wardrobe Space

C15



2 BEDROOM



Living / Kitchen
7.25m x 3.92m 23.79ft x 12.86ft

Bedroom 1
4.39m x 3.82m 14.40ft x 12.53ft

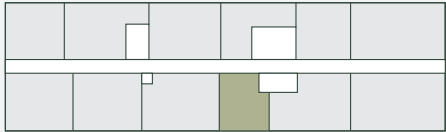
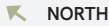
Bedroom 2
3.12m x 2.77m 10.24ft x 9.09ft

Area
66.5m² 715.8ft²

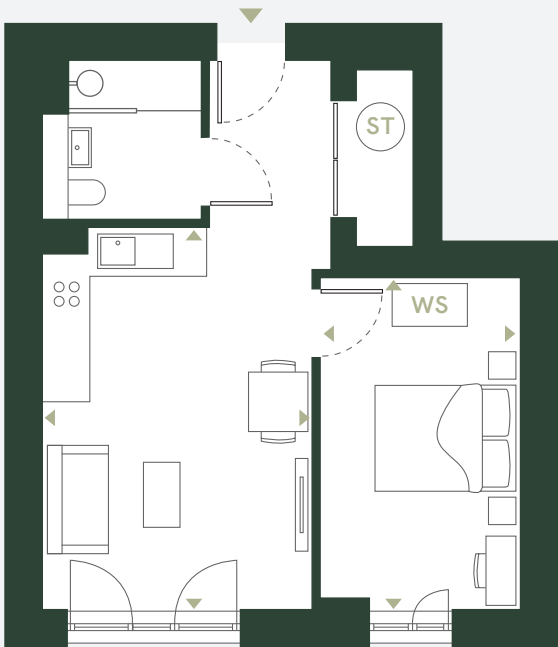
- ◀▶ Measurement Points
- ST Store Cupboard / Water Cylinder
- WS Wardrobe Space

Disclaimer: Blinds, curtains, curtain rails not included. Wardrobes not included indicative of space only. All dimensions are taken approximately from the middle of the room (◀▶). Each layout may vary. All measurements may vary within the tolerance percentage agreed. The dimensions are not intended for use for carpet/ flooring sizes, appliances or furniture. Kitchen layout is indicative only and may be subject to change. Specification and finishes are subject to change if materials and appliances are discontinued or not readily available.

C16



1 BEDROOM



Living / Kitchen
5.05m x 3.57m 16.57ft x 11.71ft

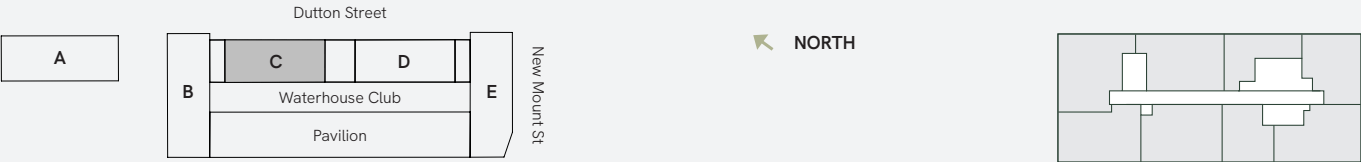
Bedroom 1
4.39m x 2.65m 14.40ft x 8.69ft

Area
41.1m² 442.4ft²

- ◀▶ Measurement Points
- ST Store Cupboard / Water Cylinder
- WS Wardrobe Space

LEVELS 02 TO 10
FLOOR PLANS

Full floor plate



◆ Lift

1 BEDROOM 2 BEDROOM 3 BEDROOM TOWN HOUSES

Apartment Locator

How to identify your apartment number

Block	Level	Unit	=	Postal Number
C	1	1	=	C11
C	10	2	=	C102

Disclaimer: Blinds, curtains, curtain rails not included. Wardrobes not included indicative of space only. All dimensions are taken approximately from the middle of the room (◀▶). Each layout may vary. All measurements may vary within the tolerance percentage agreed. The dimensions are not intended for use for carpet/ flooring sizes, appliances or furniture. Kitchen layout is indicative only and may be subject to change. Specification and finishes are subject to change if materials and appliances are discontinued or not readily available.

C21

2 BEDROOM



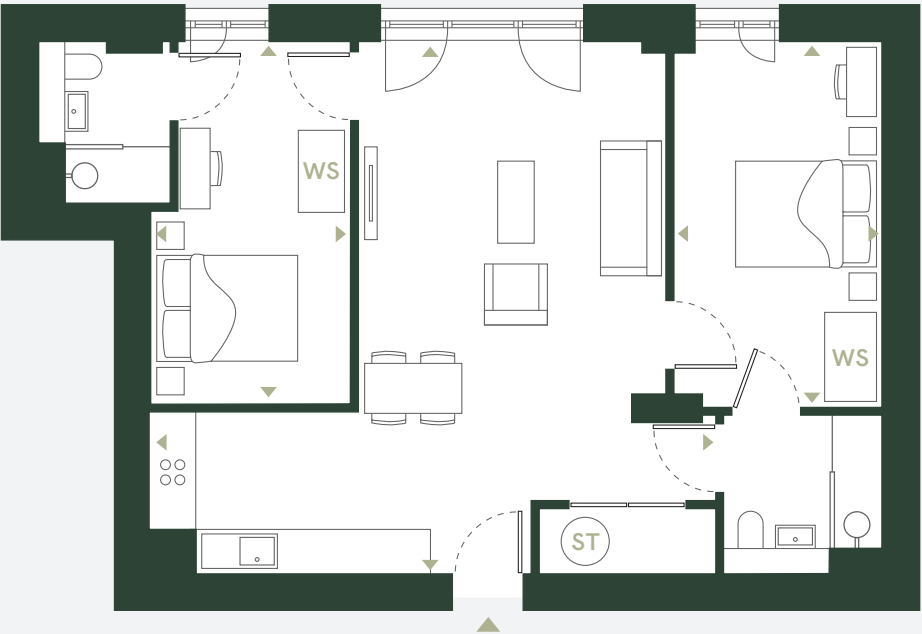
Living / Kitchen		Area	
6.23m x 4.23m	20.44ft x 13.88ft		
Bedroom 1			
5.07m x 4.87m	16.63ft x 15.98ft		
Bedroom 2			
3.93m x 3.32m	12.99ft x 10.89ft		

- ◀▶ Measurement Points
- ST Store Cupboard / Water Cylinder
- WS Wardrobe Space

Disclaimer: Blinds, curtains, curtain rails not included. Wardrobes not included indicative of space only. All dimensions are taken approximately from the middle of the room (◀▶). Each layout may vary. All measurements may vary within the tolerance percentage agreed. The dimensions are not intended for use for carpet/ flooring sizes, appliances or furniture. Kitchen layout is indicative only and may be subject to change. Specification and finishes are subject to change if materials and appliances are discontinued or not readily available.

C22

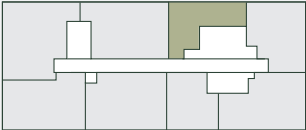
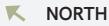
2 BEDROOM



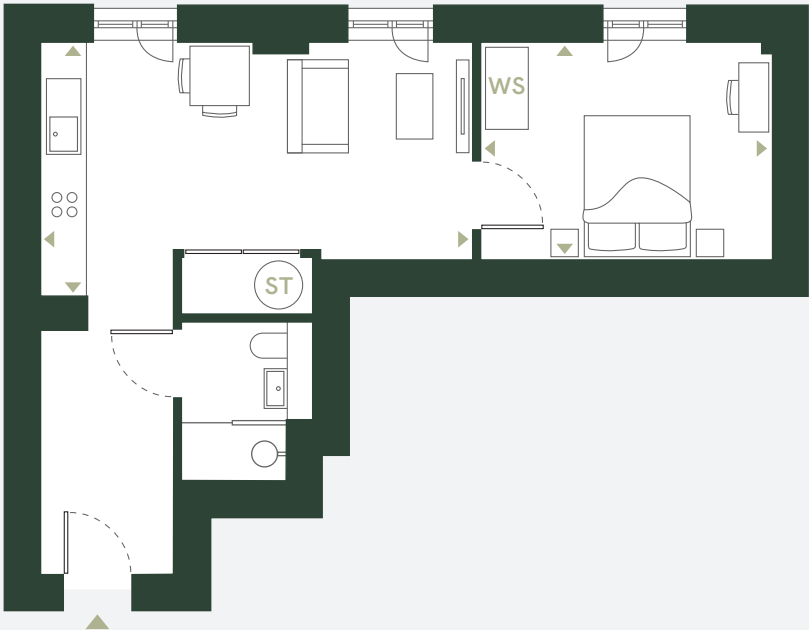
Living / Kitchen		Area	
7.50m x 7.04m	24.61ft x 23.10ft		
Bedroom 1			
4.84m x 2.75m	15.88ft x 9.02ft		
Bedroom 2			
4.79m x 2.64m	15.72ft x 8.66ft		

- ◀▶ Measurement Points
- ST Store Cupboard / Water Cylinder
- WS Wardrobe Space

C23



1 BEDROOM



Living / Kitchen

5.72m x 3.35m 18.77ft x 10.99ft

Area

40.6m² 437.0ft²

Bedroom 1

3.86m x 2.88m 12.66ft x 9.45ft

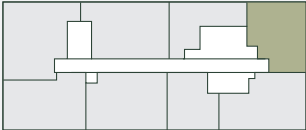
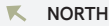
◄► Measurement Points

ST Store Cupboard / Water Cylinder

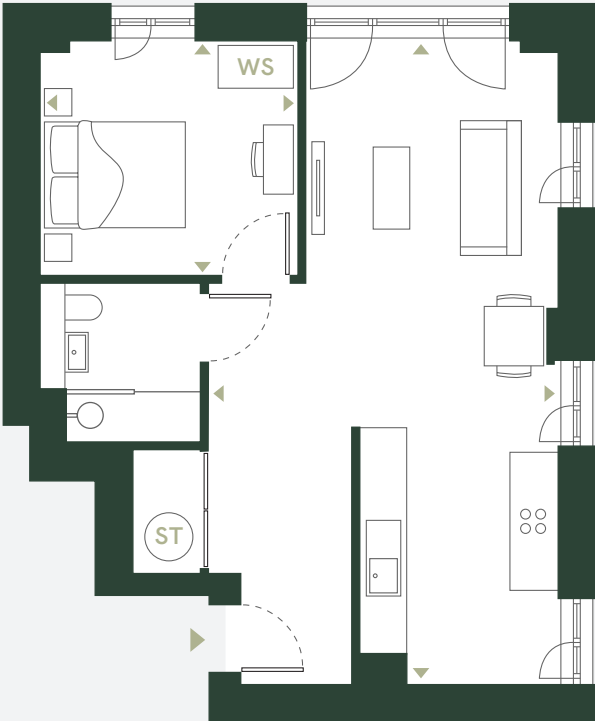
WS Wardrobe Space

Disclaimer: Blinds, curtains, curtain rails not included. Wardrobes not included indicative of space only. All dimensions are taken approximately from the middle of the room (◄►). Each layout may vary. All measurements may vary within the tolerance percentage agreed. The dimensions are not intended for use for carpet/ flooring sizes, appliances or furniture. Kitchen layout is indicative only and may be subject to change. Specification and finishes are subject to change if materials and appliances are discontinued or not readily available.

C24



1 BEDROOM



Living / Kitchen

8.51m x 4.63m 27.92ft x 15.19ft

Area

52.3m² 563.0ft²

Bedroom 1

3.39m x 3.10m 11.12ft x 10.17ft

◄► Measurement Points

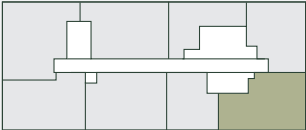
ST Store Cupboard / Water Cylinder

WS Wardrobe Space

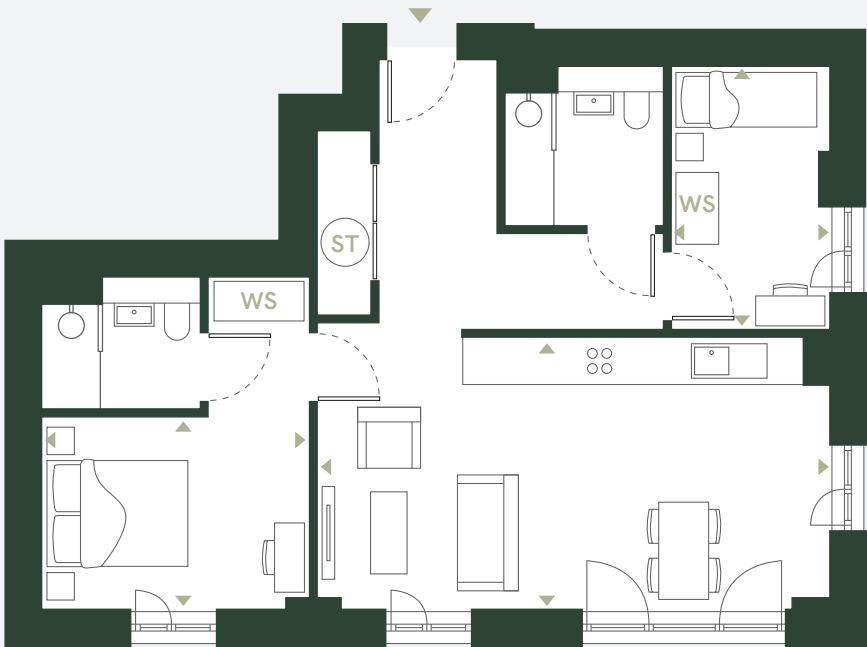
LEVELS 02 TO 10

C25

NORTH



2 BEDROOM



Living / Kitchen

6.78m x 3.59m 22.24ft x 11.78ft

Area

64.1m² 690.0ft²

Bedroom 1

4.39m x 3.54m 14.40ft x 11.61ft

Bedroom 2

3.47m x 2.10m 11.38ft x 6.89ft

Measurement Points

ST Store Cupboard / Water Cylinder

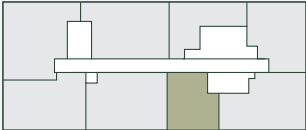
WS Wardrobe Space

Disclaimer: Blinds, curtains, curtain rails not included. Wardrobes not included indicative of space only. All dimensions are taken approximately from the middle of the room (↔). Each layout may vary. All measurements may vary within the tolerance percentage agreed. The dimensions are not intended for use for carpet/ flooring sizes, appliances or furniture. Kitchen layout is indicative only and may be subject to change. Specification and finishes are subject to change if materials and appliances are discontinued or not readily available.

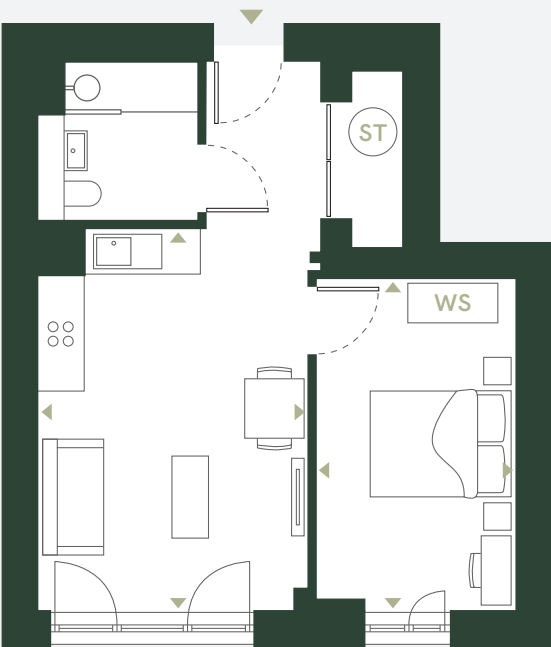
LEVELS 02 TO 10

C26

NORTH



1 BEDROOM



Living / Kitchen

5.05m x 3.58m 16.57ft x 11.75ft

Area

41.1m² 442.4ft²

Bedroom 1

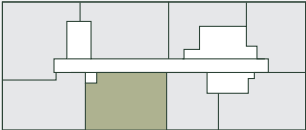
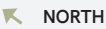
4.39m x 2.65m 14.40ft x 8.69ft

Measurement Points

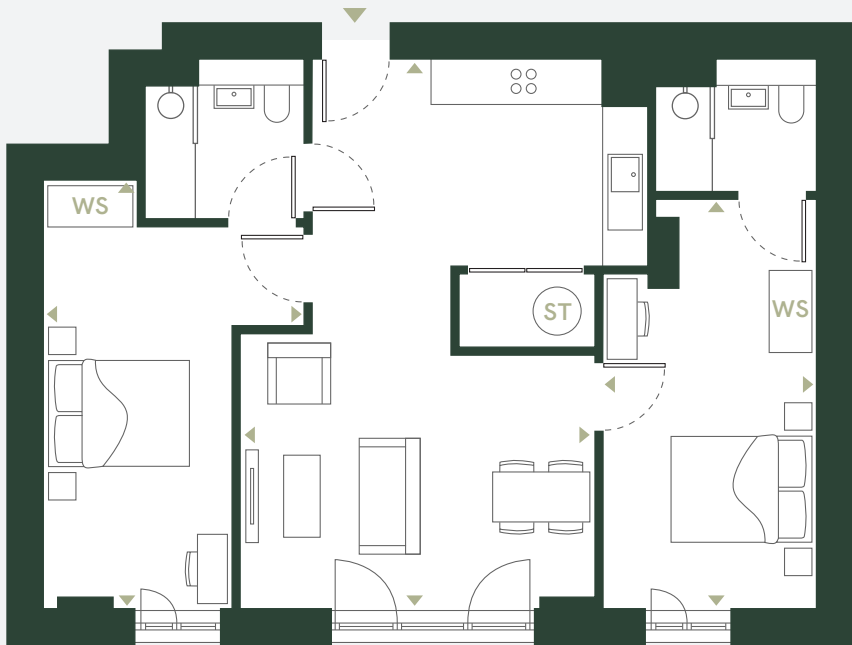
ST Store Cupboard / Water Cylinder

WS Wardrobe Space

C27



2 BEDROOM



Living / Kitchen

7.25m x 4.70m 23.79ft x 15.42ft

Area

72.5m² 780.4ft²

Bedroom 1

5.67m x 3.45m 18.60ft x 11.32ft

Bedroom 2

5.41m x 2.82m 17.75ft x 9.25ft

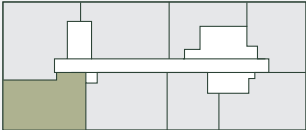
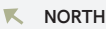
◄► Measurement Points

ST Store Cupboard / Water Cylinder

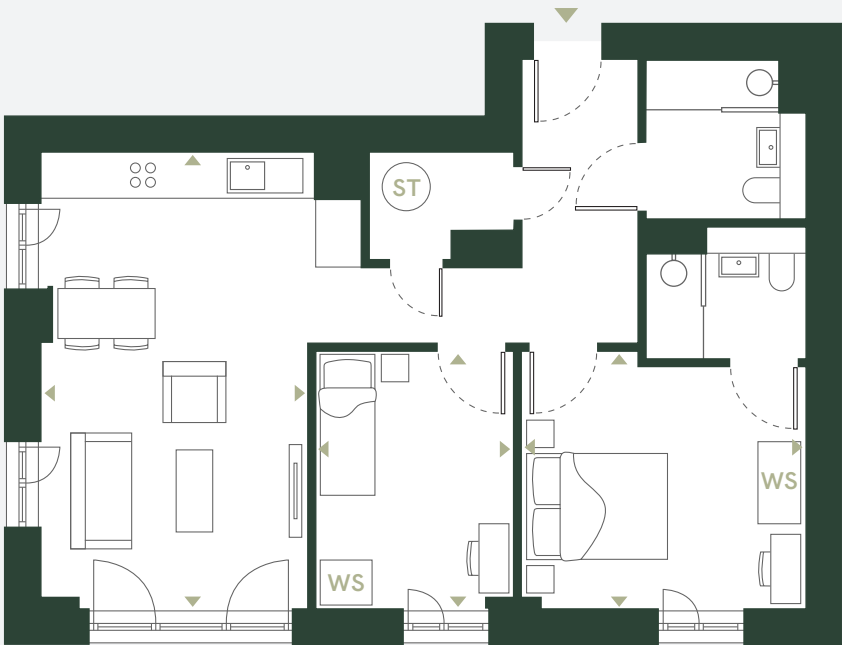
WS Wardrobe Space

Disclaimer: Blinds, curtains, curtain rails not included. Wardrobes not included indicative of space only. All dimensions are taken approximately from the middle of the room (◄►). Each layout may vary. All measurements may vary within the tolerance percentage agreed. The dimensions are not intended for use for carpet/ flooring sizes, appliances or furniture. Kitchen layout is indicative only and may be subject to change. Specification and finishes are subject to change if materials and appliances are discontinued or not readily available.

C28



2 BEDROOM



Living / Kitchen

6.04m x 3.53m 19.82ft x 11.58ft

Area

65.7m² 707.2ft²

Bedroom 1

3.77m x 3.41m 12.37ft x 11.19ft

Bedroom 2

3.41m x 2.60m 11.19ft x 8.53ft

◄► Measurement Points

ST Store Cupboard / Water Cylinder

WS Wardrobe Space

Specifications

RESIDENT AMENITIES

- Concierge
- Parcel store
- Cycle Store
- Swimming pools
- Private landscaped garden
- Squash and basketball courts
- Games room
- Private dining
- Cinema room
- Meeting room
- Work spaces
- Lounges

PUBLIC AMENITIES

A new public avenue with shops, restaurants and office space

FLOORING

- Laminate wood flooring in bedroom, lounge and kitchen
- Porcelain tiling in bathroom and ensuite

KITCHENS

- Oversize full height kitchen wall units
- LED strip downlighting
- Quartz worktops & splashback
- Ceramic induction hob with extractor hood
- Fully-integrated dishwasher
- Fully-integrated oven
- Fully-integrated 70/30 split fridge/freezer
- Free-standing washer/dryer in storage cupboard
- Black stainless steel sink and mixer tap

BATHROOMS

- Backlit heated mirror cabinet
- WC and basin
- Quartz vanity unit
- Porcelain tiling
- Black mixer taps and shower head
- Black heated towel rail

HEATING & ELECTRICAL

- Wall-mounted electric panel heaters - WIFI enabled
- Integrated TV/reception system
- Entrance access system, controlled via app
- Fire alarms & sprinklers
- High speed internet access
- Power outlets

Notes: The design development of Waterhouse Gardens is still ongoing and certain items of the specification may be amended to an item of equivalent quality.



T & C 'S

Salboy International Ltd on behalf of Waterhouse Gardens gives notice to anyone who may read these particulars as follows: 1. These particulars are prepared for the guidance only of prospective purchasers. They are intended to give a fair overall description of the property but are not intended to constitute part of an offer or contract. 2. Any information contained herein (whether in the text, plans or photographs) is given in good faith but should not be relied upon as being a statement or representation of fact. 3. Nothing in these particulars shall be deemed to be a statement that the property is in good condition or otherwise nor that any services or facilities are in good working order. 4. The photographs appearing in this brochure show only certain parts and aspects of the property at the time when the photographs were taken. Certain aspects may have changed since the photographs were taken and it should not be assumed that the property remains precisely as displayed in the photographs. Furthermore no assumptions should be made in respect of parts of the property which are not shown in the photographs. 5. Any areas, measurements or distances referred to herein are approximate only. 6. Where there is reference in these particulars to the fact that alterations have been carried out or that a particular use is made of any part of the property this is not intended to be a statement that any necessary planning, building regulations or other consents have been obtained and these matters must be verified by any intending purchaser. 7. Descriptions of a property are inevitably subjective and the descriptions contained herein are used in good faith as an opinion and not by way of statement of fact. Published February 2024, Salboy.co.uk. 8 All images used are for illustrative purposes only. These and the dimensions given are illustrative for this house type and individual properties may differ, in particular, final elevations of the property purchased may differ from those shown.