

CHORLTON HOUSE

WATERHOUSE GARDENS



04

ABOUT CHORLTON HOUSE

06/09

WATERHOUSE CLUB

10/17

THE APARTMENTS

32/46

GROUND TO LEVEL 01

42/52

LEVELS 02 TO 10

58/62

LEVEL 11

64/66

LEVELS 12 TO 14

68/69

SPECIFICATION



WELCOME TO
CHORLTON HOUSE AT WATERHOUSE GARDENS

The CHORLTON House residences include 1 and 2 bedroom apartments, duplex townhouses and penthouses. From a fresh colour palette to top-quality fittings and considerable natural light, these homes are designed to create a contemporary and elegant feel.

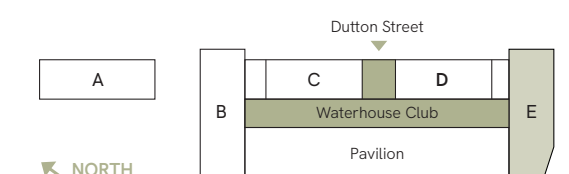
With direct access to The Waterhouse Club, residents benefit from the private amenities curated for an elevated, modern lifestyle.

WATERHOUSE CLUB

Amenities

ON YOUR DOORSTEP

The Waterhouse Club is home to a collection of amenities that sets a new benchmark for health and leisure, from your doorstep. A club that promotes wellness and community, every facility has been designed with style, functionality and wellbeing in mind.





Work

CO-WORKING

The co-working space and library lounge is a welcoming but practical space designed to fulfil the requirements of modern, hybrid working.



Entertain

CINEMA & DINING

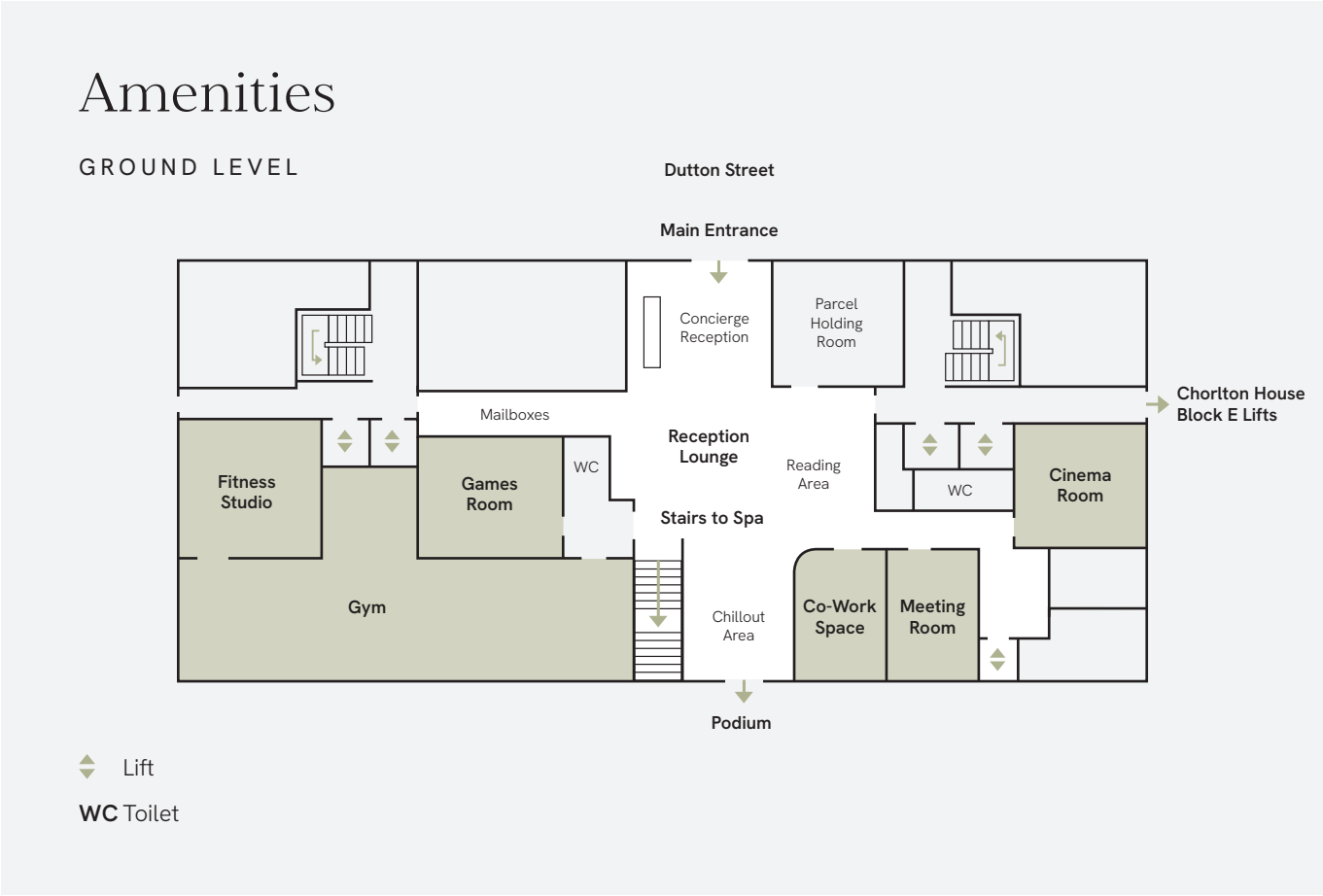
The cinema room is available for residents to hire for an immersive, private cinema experience, whilst the private dining room provides a more intimate setting to entertain family and friends.



Get Fit

GYMNASIUM

A fully equipped gymnasium and fitness studio is designed to help residents achieve their exercise goals.



Play

GAMES ROOM

The games area is ideal for those looking to socialise and participate in some good-natured competition with family, friends and neighbours.



Challenge

BASKETBALL & SQUASH

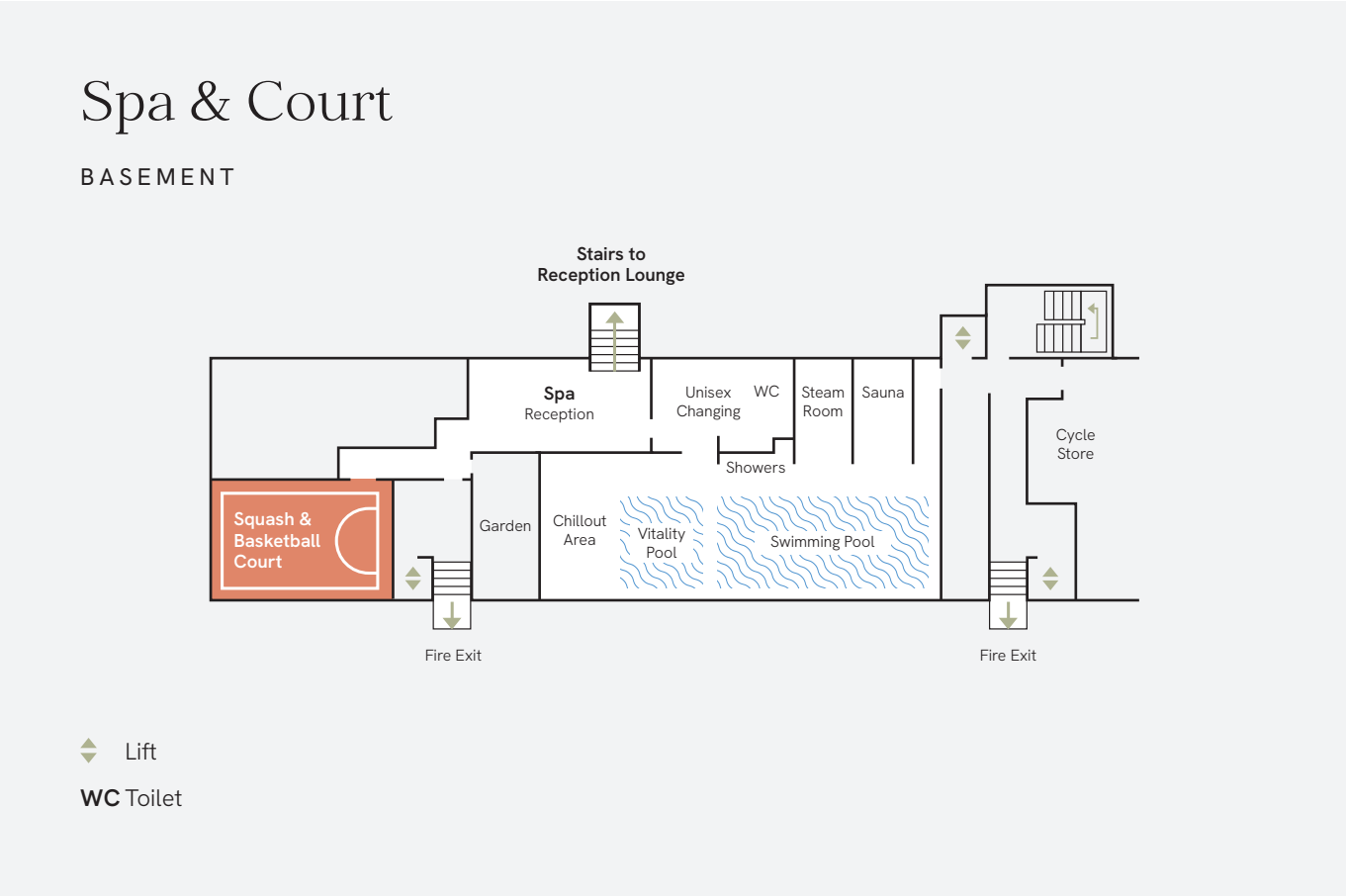
A half-size basketball and squash court allows for residents to let off steam and play sports in style.



Relax

SWIMMING POOL

A swimming pool and spa equipped with a cold plunge pool, experience shower, steam room and sauna, create a serene environment for residents to unwind and recuperate.



CHORLTON HOUSE

The Apartments

HOTEL LIKE LIVING

Apartment layouts and interiors are spacious, contemporary and adaptable. Sophistication meets comfort in every detail.



THE RESIDENCES

Kitchen

The kitchen boasts bespoke cabinetry with gloss finishes, integrated modern appliances, and warm-toned lighting.



THE RESIDENCES

Living space

Carefully designed,
living spaces are
bright, spacious
and adaptable.



THE RESIDENCES

Bedroom

Warm and inviting, the bedroom offers a luxury sanctuary for rest and relaxation.



THE RESIDENCES

Bathroom

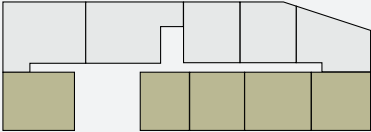
Crafted with the finest fixtures, tiling and cabinetry each bathroom and en-suite offers a space for residents to refresh and unwind.

FLOORPLANS

Floorplates

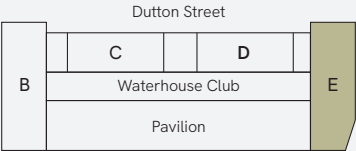
Townhouses

NORTH



A

NORTH



LEVEL 01



GROUND LEVEL



- ◆ Lift
- ST Store Cupboard / Water Cylinder
- WS Wardrobe Space

PG Private Gardens

3 BEDROOM TOWN HOUSES

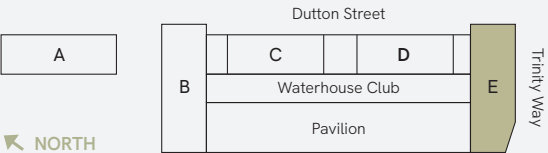
Disclaimer: Blinds, curtains, curtain rails not included. Wardrobes not included indicative of space only. All dimensions are taken approximately from the middle of the room (◀▶). Each layout may vary. All measurements may vary within the tolerance percentage agreed. The dimensions are not intended for use for carpet/ flooring sizes, appliances or furniture. Kitchen layout is indicative only and may be subject to change. Specification and finishes are subject to change if materials and appliances are discontinued or not readily available.

APARTMENT LOCATOR

How to identify your apartments number

Block	Level	Unit	=	Postal Number
E	1	1	=	E11
E	10	2	=	E102

Full floor plate



- ◆ Lift
- ST Store Cupboard / Water Cylinder
- WS Wardrobe Space

1 BEDROOM

2 BEDROOM

3 BEDROOM TOWN HOUSES

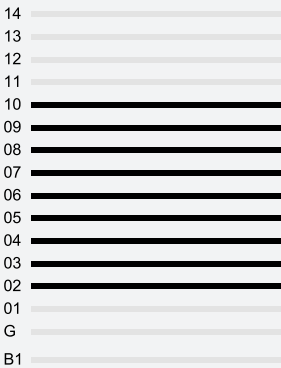
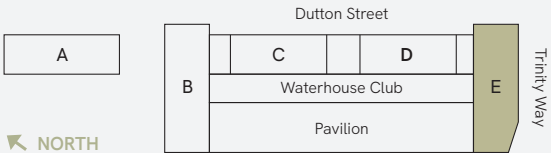
Disclaimer: Blinds, curtains, curtain rails not included. Wardrobes not included indicative of space only. All dimensions are taken approximately from the middle of the room (↔). Each layout may vary. All measurements may vary within the tolerance percentage agreed. The dimensions are not intended for use for carpet/ flooring sizes, appliances or furniture. Kitchen layout is indicative only and may be subject to change. Specification and finishes are subject to change if materials and appliances are discontinued or not readily available.

APARTMENT LOCATOR

How to identify your apartments number

Block	Level	Unit	=	Postal Number
E	1	1	=	E11
E	10	2	=	E102

Full floor plate



- ◆ Lift
- ST Store Cupboard / Water Cylinder
- WS Wardrobe Space

1 BEDROOM

2 BEDROOM

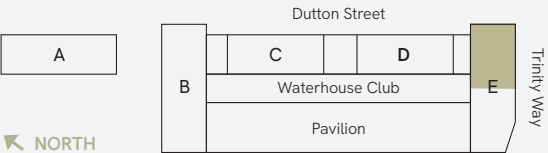
Disclaimer: Blinds, curtains, curtain rails not included. Wardrobes not included indicative of space only. All dimensions are taken approximately from the middle of the room (↔). Each layout may vary. All measurements may vary within the tolerance percentage agreed. The dimensions are not intended for use for carpet/ flooring sizes, appliances or furniture. Kitchen layout is indicative only and may be subject to change. Specification and finishes are subject to change if materials and appliances are discontinued or not readily available.

APARTMENT LOCATOR

How to identify your apartments number

Block	Level	Unit	=	Postal Number
E	1	1	=	E11
E	10	2	=	E102

Full floor plate



- 14
- 13
- 12
- 11
- 10
- 09
- 08
- 07
- 06
- 05
- 04
- 03
- 02
- 01
- G
- B1



- ◆ Lift
- ST Store Cupboard / Water Cylinder
- WS Wardrobe Space

1 BEDROOM 2 BEDROOM

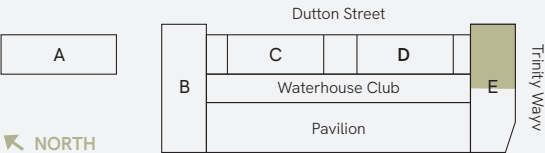
Disclaimer: Blinds, curtains, curtain rails not included. Wardrobes not included indicative of space only. All dimensions are taken approximately from the middle of the room (↔). Each layout may vary. All measurements may vary within the tolerance percentage agreed. The dimensions are not intended for use for carpet/flooring sizes, appliances or furniture. Kitchen layout is indicative only and may be subject to change. Specification and finishes are subject to change if materials and appliances are discontinued or not readily available.

APARTMENT LOCATOR

How to identify your apartments number

Block	Level	Unit	=	Postal Number
E	1	1	=	E11
E	10	2	=	E102

Full floor plate



- 14
- 13
- 12
- 11
- 10
- 09
- 08
- 07
- 06
- 05
- 04
- 03
- 02
- 01
- G
- B1



- ◆ Lift
- ST Store Cupboard / Water Cylinder
- WS Wardrobe Space

1 BEDROOM 3 BEDROOM

Disclaimer: Blinds, curtains, curtain rails not included. Wardrobes not included indicative of space only. All dimensions are taken approximately from the middle of the room (◀▶). Each layout may vary. All measurements may vary within the tolerance percentage agreed. The dimensions are not intended for use for carpet/flooring sizes, appliances or furniture. Kitchen layout is indicative only and may be subject to change. Specification and finishes are subject to change if materials and appliances are discontinued or not readily available.

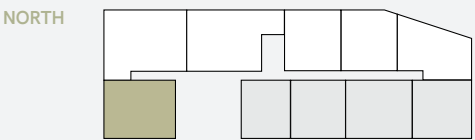
APARTMENT LOCATOR

How to identify your apartments number

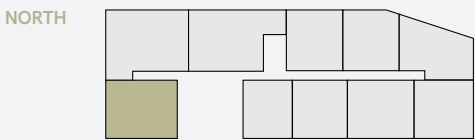
Block	Level	Unit	=	Postal Number
E	1	1	=	E11
E	10	2	=	E102

FLOORPLANS

Apartment Types



3 BEDROOM TOWN HOUSE



Living / Kitchen	
8.67m x 4.88m	28.44ft x 15.99ft
Bedroom 1	
3.02m x 3.03m	9.92ft x 9.95ft
Bedroom 2	
6.45m x 3.70m	21.17ft x 12.16ft
Bedroom 3	
4.96m x 3.31m	16.26ft x 10.87ft

Ground Level Area	
61.8m²	664.7ft²
Level 1 Area	
61.8m²	664.9ft²

- ST Store Cupboard / Water Cylinder
- WS Wardrobe Space

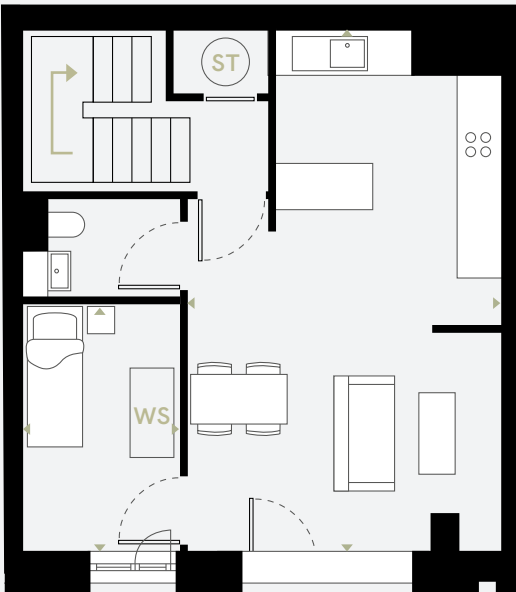
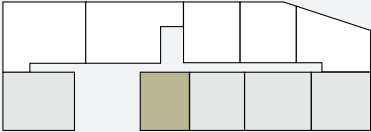
Disclaimer: Blinds, curtains, curtain rails not included. Wardrobes not included indicative of space only. All dimensions are taken approximately from the middle of the room («»). Each layout may vary. All measurements may vary within the tolerance percentage agreed. The dimensions are not intended for use for carpet/ flooring sizes, appliances or furniture. Kitchen layout is indicative only and may be subject to change. Specification and finishes are subject to change if materials and appliances are discontinued or not readily available.

GROUND LEVEL

E02

3 BEDROOM TOWN HOUSE

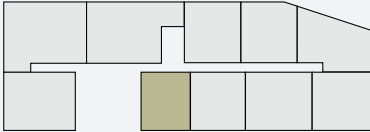
NORTH



LEVEL 01

E02

NORTH



Living / Kitchen	
7.05m x 4.17m	23.13ft x 13.70ft
Bedroom 1	
3.28m x 2.09m	10.77ft x 6.86ft
Bedroom 2	
5.90m x 2.88m	19.37ft x 9.44ft
Bedroom 3	
3.99m x 3.37m	13.10ft x 11.04ft

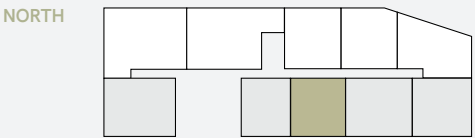
Ground Level Area	
44.2m ²	476.1ft ²
Level 1 Area	
45.2m ²	487.0ft ²

ST Store Cupboard / Water Cylinder
WS Wardrobe Space

Disclaimer: Blinds, curtains, curtain rails not included. Wardrobes not included indicative of space only. All dimensions are taken approximately from the middle of the room (↔). Each layout may vary. All measurements may vary within the tolerance percentage agreed. The dimensions are not intended for use for carpet/ flooring sizes, appliances or furniture. Kitchen layout is indicative only and may be subject to change. Specification and finishes are subject to change if materials and appliances are discontinued or not readily available.

GROUND LEVEL

E03

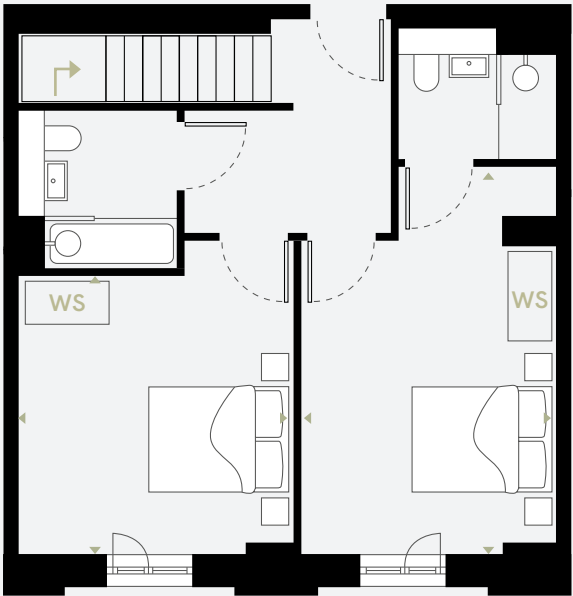
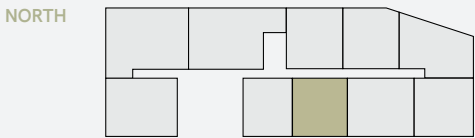


3 BEDROOM TOWN HOUSE



LEVEL 01

E03



Living / Kitchen

6.93m x 4.53m 22.73ft x 14.87ft

Bedroom 1

3.28m x 2.52m 10.77ft x 8.27ft

Bedroom 2

5.16m x 3.39m 16.92ft x 11.13ft

Bedroom 3

4.17m x 3.66m 13.69ft x 12.00ft

Ground Level Area

49.6m² 534.0ft²

Level 1 Area

51.0m² 548.7ft²

◄► Measurement Points

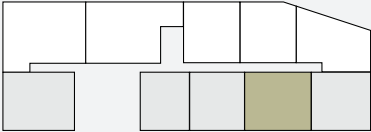
ST Store Cupboard / Water Cylinder

WS Wardrobe Space

Disclaimer: Blinds, curtains, curtain rails not included. Wardrobes not included indicative of space only. All dimensions are taken approximately from the middle of the room (◄►). Each layout may vary. All measurements may vary within the tolerance percentage agreed. The dimensions are not intended for use for carpet/ flooring sizes, appliances or furniture. Kitchen layout is indicative only and may be subject to change. Specification and finishes are subject to change if materials and appliances are discontinued or not readily available.

E04

NORTH

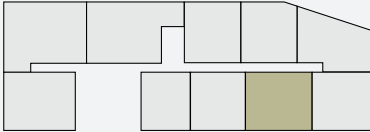


3 BEDROOM TOWN HOUSE



E04

NORTH



Living / Kitchen

8.63m x 6.93m 28.32ft x 22.73ft

Bedroom 1

4.75m x 2.98m 15.60ft x 9.79ft

Bedroom 2

3.81m x 2.77m 12.51ft x 9.09ft

Bedroom 3

3.81m x 2.67m 12.51ft x 8.76ft

Ground Level Area

59.8m² 643.7ft²

Level 1 Area

59.3m² 638.8ft²

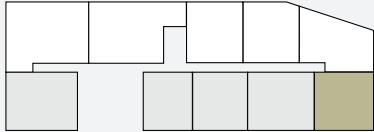
ST Store Cupboard / Water Cylinder

WS Wardrobe Space

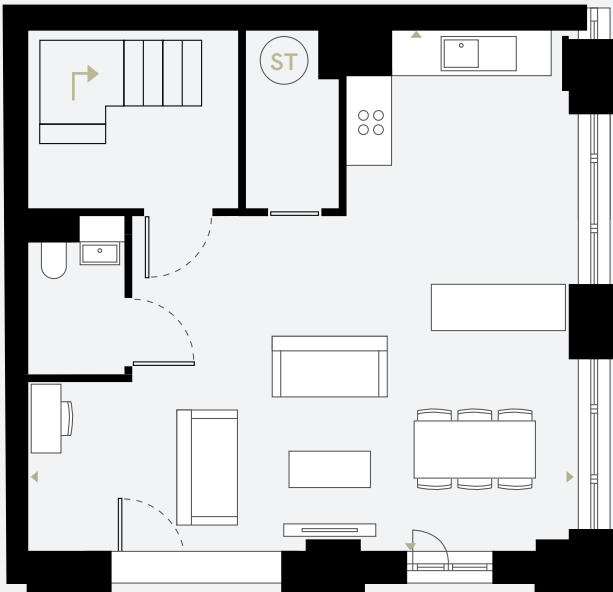
Disclaimer: Blinds, curtains, curtain rails not included. Wardrobes not included indicative of space only. All dimensions are taken approximately from the middle of the room («»). Each layout may vary. All measurements may vary within the tolerance percentage agreed. The dimensions are not intended for use for carpet/ flooring sizes, appliances or furniture. Kitchen layout is indicative only and may be subject to change. Specification and finishes are subject to change if materials and appliances are discontinued or not readily available.

E05

NORTH

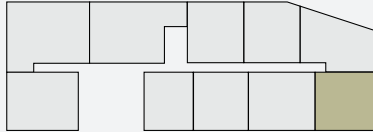


3 BEDROOM TOWN HOUSE



E05

NORTH



Living / Kitchen

7.44m x 6.93m 24.43ft x 22.72ft

Bedroom 1

3.85m x 3.83m 12.64ft x 12.58ft

Bedroom 2

3.40m x 3.18m 11.14ft x 10.44ft

Bedroom 3

3.24m x 2.66m 10.64ft x 8.73ft

Ground Level Area

51.0m² 549.0ft²

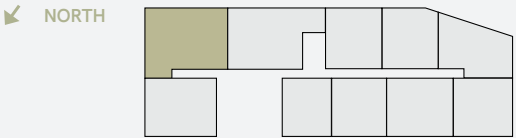
Level 1 Area

51.3m² 552.0ft²

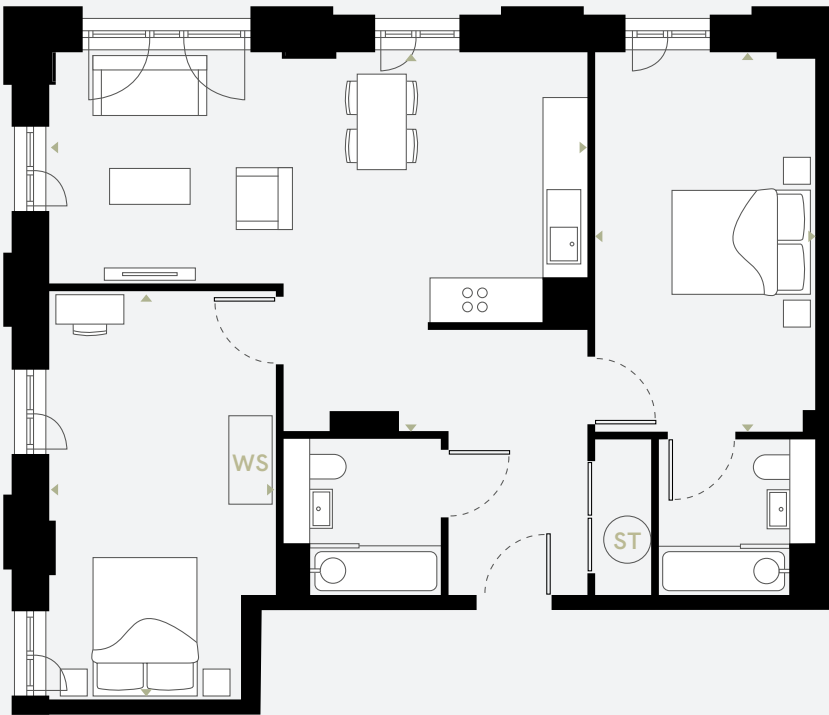
ST Store Cupboard / Water Cylinder

WS Wardrobe Space

Disclaimer: Blinds, curtains, curtain rails not included. Wardrobes not included indicative of space only. All dimensions are taken approximately from the middle of the room (↔). Each layout may vary. All measurements may vary within the tolerance percentage agreed. The dimensions are not intended for use for carpet/ flooring sizes, appliances or furniture. Kitchen layout is indicative only and may be subject to change. Specification and finishes are subject to change if materials and appliances are discontinued or not readily available.



2 BEDROOM



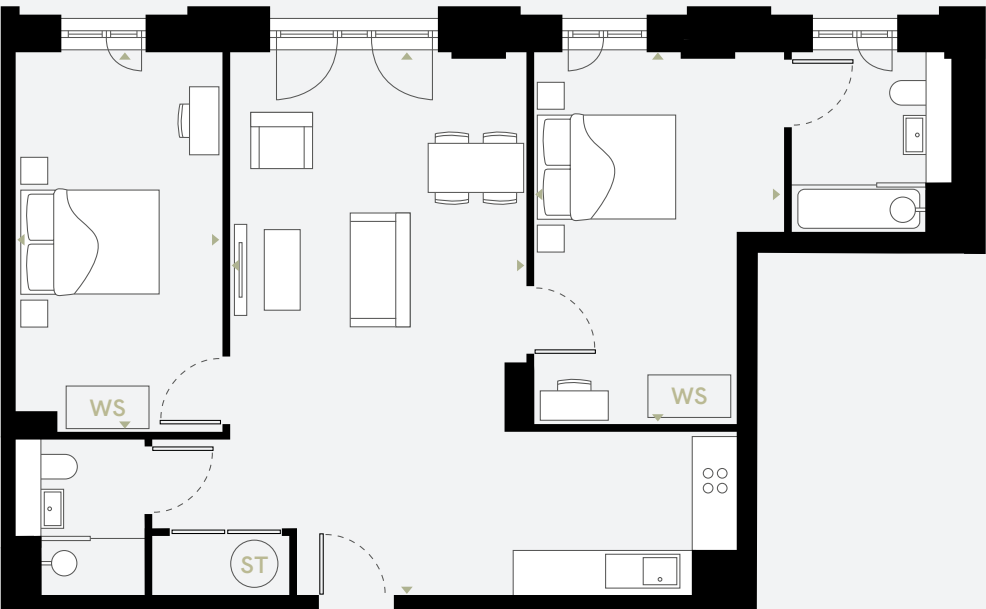
Living / Kitchen		Area	
7.25m x 3.63m	23.79ft x 11.93ft		
Bedroom 1		79.2m ²	852.5ft ²
5.50m x 3.05m	18.04ft x 10.02ft		
Bedroom 2			
5.11m x 2.96m	16.76ft x 9.73ft		

ST Store Cupboard / Water Cylinder
WS Wardrobe Space

Disclaimer: Blinds, curtains, curtain rails not included. Wardrobes not included indicative of space only. All dimensions are taken approximately from the middle of the room («»). Each layout may vary. All measurements may vary within the tolerance percentage agreed. The dimensions are not intended for use for carpet/ flooring sizes, appliances or furniture. Kitchen layout is indicative only and may be subject to change. Specification and finishes are subject to change if materials and appliances are discontinued or not readily available.



2 BEDROOM



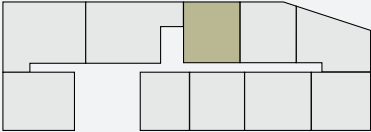
Living / Kitchen		Area	
7.31m x 5.92m	23.98ft x 19.44ft		
Bedroom 1		78.7m ²	846.8ft ²
5.01m x 3.37m	16.43ft x 11.04ft		
Bedroom 2			
5.11m x 2.79m	16.75ft x 9.14ft		

ST Store Cupboard / Water Cylinder
WS Wardrobe Space

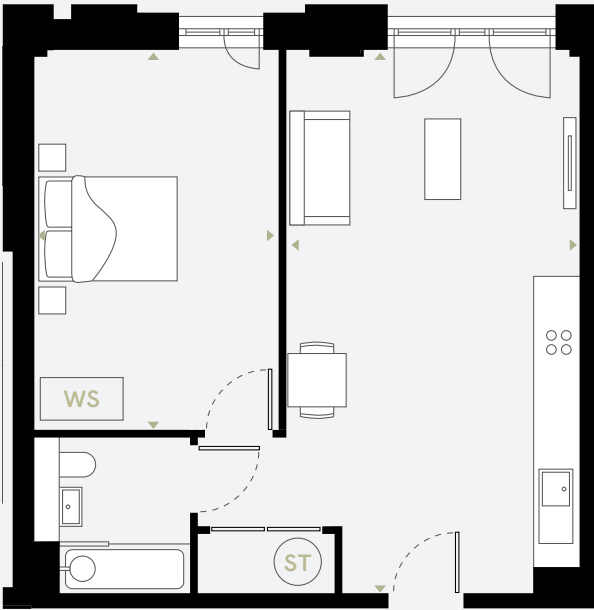
LEVEL 01

E13

NORTH



1 BEDROOM



Living / Kitchen
7.32m x 3.95m 24.00ft x 12.96ft

Area
53.9m² 580.3ft²

Bedroom 1
5.12m x 3.29m 16.79ft x 10.80ft

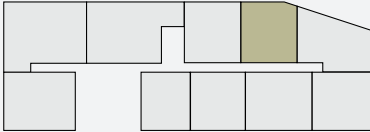
ST Store Cupboard / Water Cylinder
WS Wardrobe Space

Disclaimer: Blinds, curtains, curtain rails not included. Wardrobes not included indicative of space only. All dimensions are taken approximately from the middle of the room («»). Each layout may vary. All measurements may vary within the tolerance percentage agreed. The dimensions are not intended for use for carpet/ flooring sizes, appliances or furniture. Kitchen layout is indicative only and may be subject to change. Specification and finishes are subject to change if materials and appliances are discontinued or not readily available.

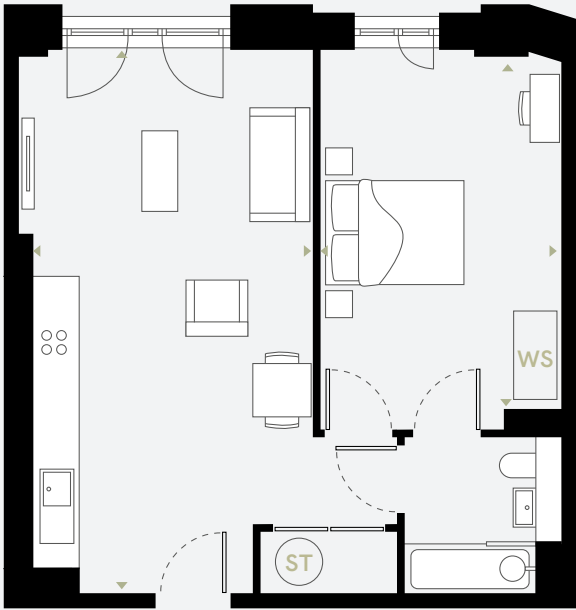
LEVEL 01

E14

NORTH



1 BEDROOM

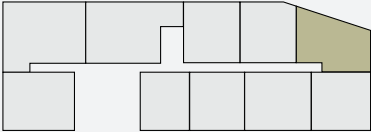


Living / Kitchen
7.35m x 3.96m 24.11ft x 12.99ft

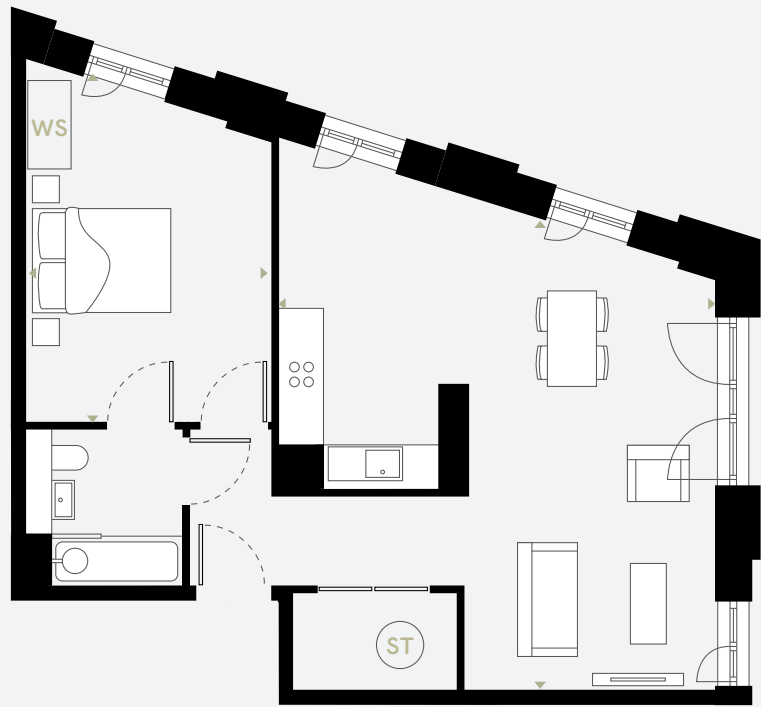
Area
53.4m² 575.0ft²

Bedroom 1
5.11m x 3.24m 16.77ft x 10.64ft

ST Store Cupboard / Water Cylinder
WS Wardrobe Space



1 BEDROOM



Living / Kitchen

6.56m x 5.87m 21.54ft x 19.27ft

Area

60.4m² 650.2ft²

Bedroom 1

4.71m x 3.30m 15.44ft x 10.84ft

ST Store Cupboard / Water Cylinder

WS Wardrobe Space

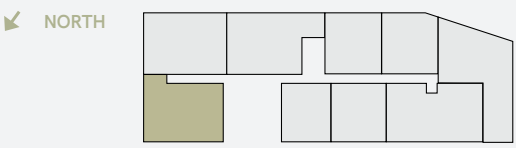
Disclaimer: Blinds, curtains, curtain rails not included. Wardrobes not included indicative of space only. All dimensions are taken approximately from the middle of the room (↔). Each layout may vary. All measurements may vary within the tolerance percentage agreed. The dimensions are not intended for use for carpet/flooring sizes, appliances or furniture. Kitchen layout is indicative only and may be subject to change. Specification and finishes are subject to change if materials and appliances are discontinued or not readily available.



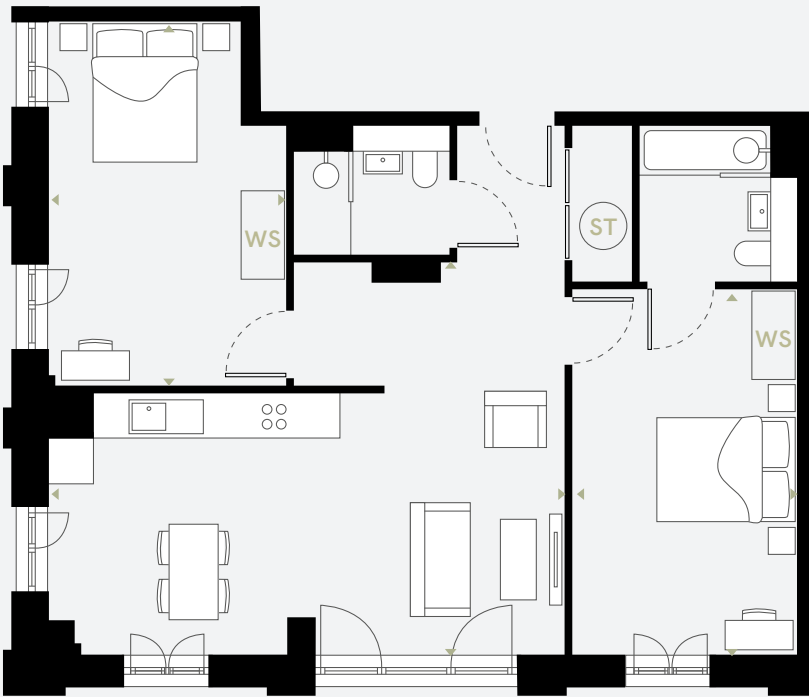
WATERHOUSE
GARDENS

LEVELS 02 TO 10

E21



2 BEDROOM



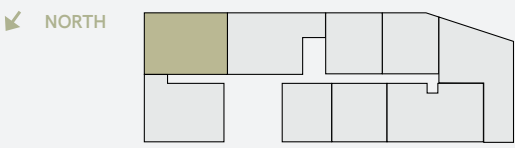
Living / Kitchen		Area
6.95m x 5.28m	22.79ft x 17.33ft	75.4m² 811.6ft²
Bedroom 1		
4.90m x 3.20m	16.09ft x 10.49ft	
Bedroom 2		
4.92m x 3.03m	16.14ft x 9.93ft	

ST Store Cupboard / Water Cylinder
WS Wardrobe Space

Disclaimer: Blinds, curtains, curtain rails not included. Wardrobes not included indicative of space only. All dimensions are taken approximately from the middle of the room («»). Each layout may vary. All measurements may vary within the tolerance percentage agreed. The dimensions are not intended for use for carpet/ flooring sizes, appliances or furniture. Kitchen layout is indicative only and may be subject to change. Specification and finishes are subject to change if materials and appliances are discontinued or not readily available.

LEVELS 02 TO 10

E22



2 BEDROOM

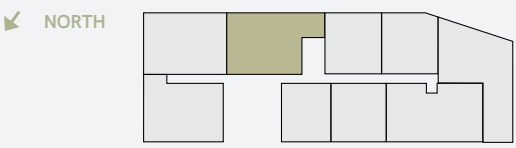


Living / Kitchen		Area
7.24m x 5.09m	23.75ft x 16.71ft	75.4m² 811.8ft²
Bedroom 1		
5.10m x 2.96m	16.74ft x 9.73ft	
Bedroom 2		
4.09m x 3.05m	13.42ft x 10.02ft	

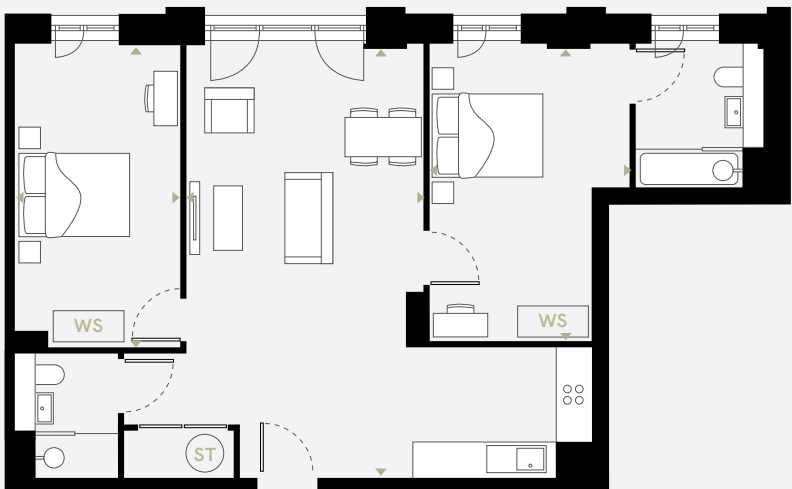
ST Store Cupboard / Water Cylinder
WS Wardrobe Space

LEVELS 02 TO 10

E23



2 BEDROOM

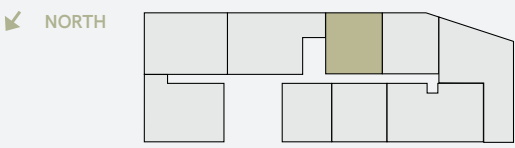


Living / Kitchen		Area	
7.34m x 5.93m	24.10ft x 19.45ft		
Bedroom 1		78.7m²	847.3ft²
5.00m x 3.37m	16.39ft x 11.04ft		
Bedroom 2			
5.11m x 2.79m	16.77ft x 9.14ft		

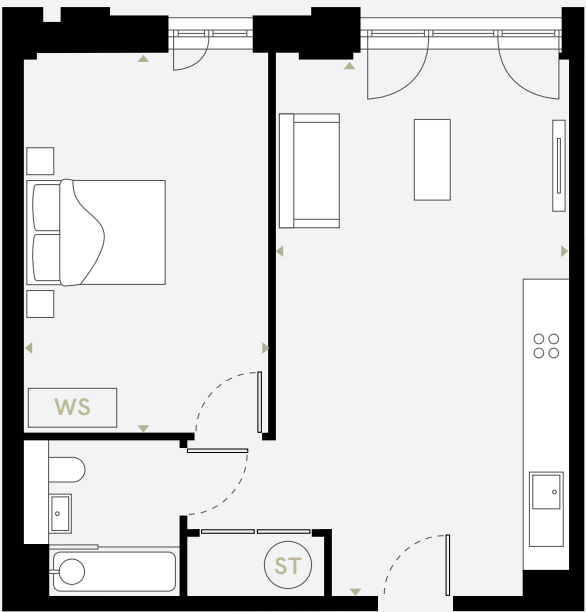
Disclaimer: Blinds, curtains, curtain rails not included. Wardrobes not included indicative of space only. All dimensions are taken approximately from the middle of the room («»). Each layout may vary. All measurements may vary within the tolerance percentage agreed. The dimensions are not intended for use for carpet/ flooring sizes, appliances or furniture. Kitchen layout is indicative only and may be subject to change. Specification and finishes are subject to change if materials and appliances are discontinued or not readily available.

LEVELS 02 TO 10

E24



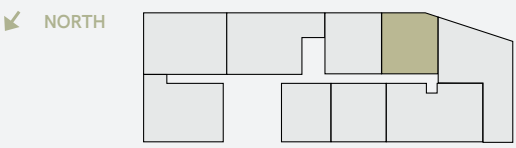
1 BEDROOM



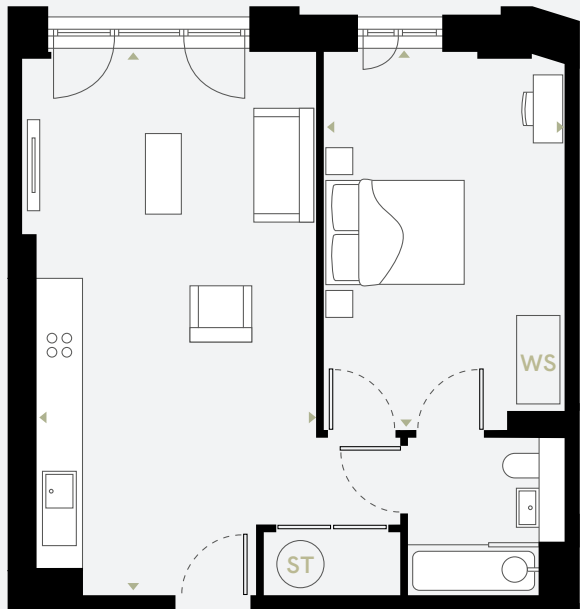
Living / Kitchen		Area		ST Store Cupboard / Water Cylinder
7.35m x 3.95m	24.11ft x 12.96ft			
Bedroom 1		53.8m²	578.7ft²	WS Wardrobe Space
5.12m x 3.29m	16.79ft x 10.80ft			

LEVELS 02 TO 10

E25



1 BEDROOM



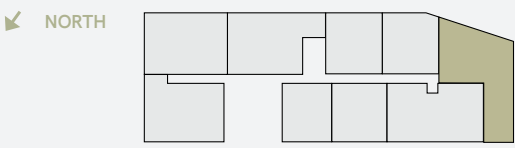
Living / Kitchen		Area	
7.35m x 3.96m	24.11ft x 12.99ft		
Bedroom 1		53.4m ²	574.7ft ²
5.09m x 3.24m	16.70ft x 10.64ft		

ST Store Cupboard / Water Cylinder
WS Wardrobe Space

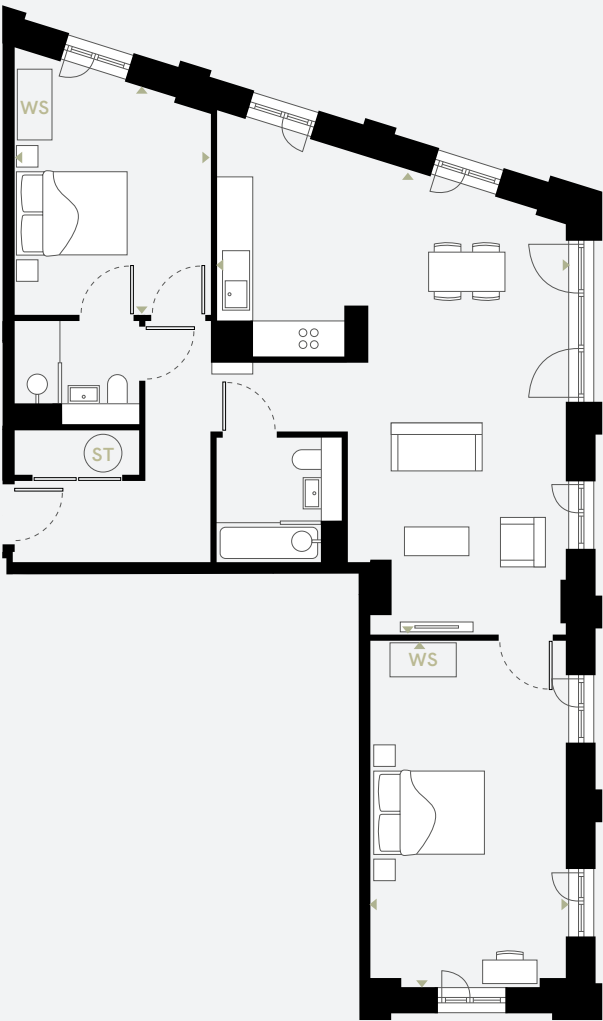
Disclaimer: Blinds, curtains, curtain rails not included. Wardrobes not included indicative of space only. All dimensions are taken approximately from the middle of the room («»). Each layout may vary. All measurements may vary within the tolerance percentage agreed. The dimensions are not intended for use for carpet/ flooring sizes, appliances or furniture. Kitchen layout is indicative only and may be subject to change. Specification and finishes are subject to change if materials and appliances are discontinued or not readily available.

LEVELS 02 TO 10

E26



2 BEDROOM

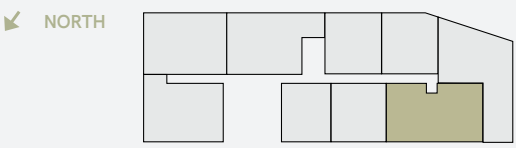


Living / Kitchen		Area	
7.85m x 5.91m	25.75ft x 19.38ft	90.6m²	975.1ft²
Bedroom 1			
5.83m x 3.29m	19.13ft x 10.80ft		
Bedroom 2			
3.85m x 3.30m	12.64ft x 10.84ft		

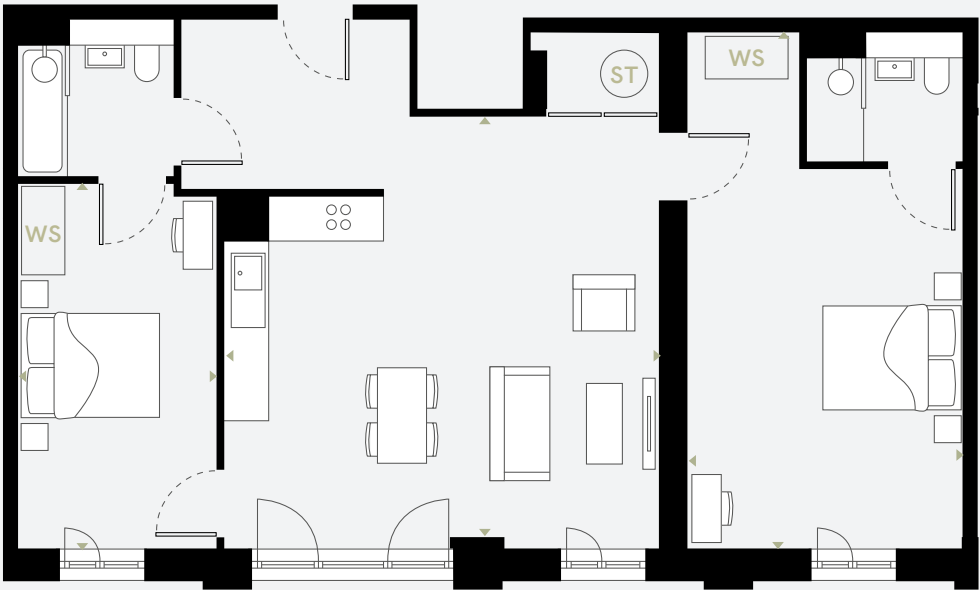
ST Store Cupboard / Water Cylinder
WS Wardrobe Space

LEVELS 02 TO 10

E27



2 BEDROOM

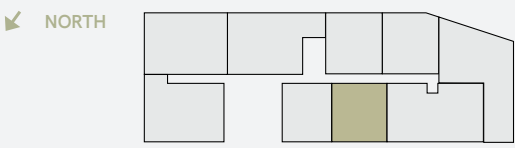


Living / Kitchen		Area	
5.86m x 5.81m	19.08ft x 19.21ft	87.5m²	941.6ft²
Bedroom 1			
6.93m x 3.71m	22.73ft x 12.16ft		
Bedroom 2			
4.90m x 2.67m	16.09ft x 8.77ft		

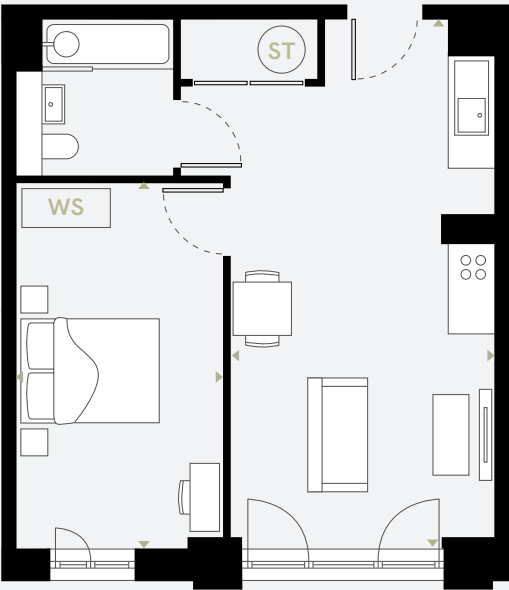
Disclaimer: Blinds, curtains, curtain rails not included. Wardrobes not included indicative of space only. All dimensions are taken approximately from the middle of the room («»). Each layout may vary. All measurements may vary within the tolerance percentage agreed. The dimensions are not intended for use for carpet/ flooring sizes, appliances or furniture. Kitchen layout is indicative only and may be subject to change. Specification and finishes are subject to change if materials and appliances are discontinued or not readily available.

LEVELS 02 TO 10

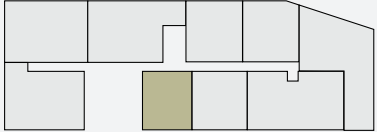
E28



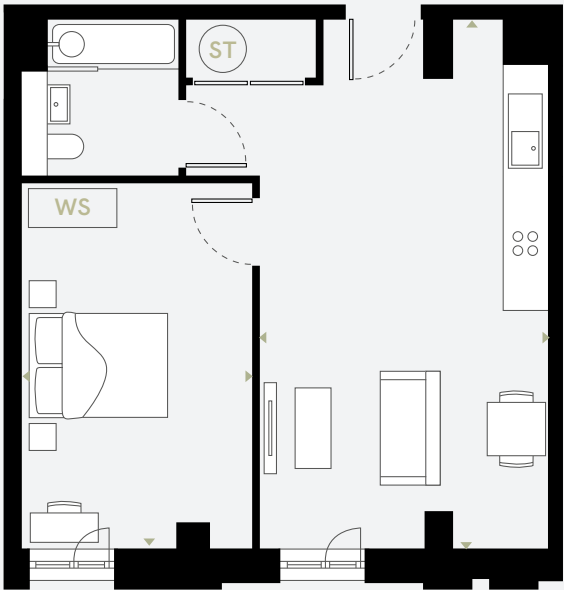
1 BEDROOM



Living / Kitchen		Area		ST Store Cupboard / Water Cylinder
7.12m x 3.55m	23.36ft x 11.65ft			
Bedroom 1		45.8m ²	493.4ft ²	WS Wardrobe Space
4.92m x 2.78m	16.13ft x 9.13ft			



1 BEDROOM



Living / Kitchen

7.12m x 3.88m 23.36ft x 12.73ft

Area

50.5m² 543.4ft²

ST Store Cupboard / Water Cylinder

WS Wardrobe Space

Bedroom 1

4.92m x 3.10m 16.14ft x 10.18ft

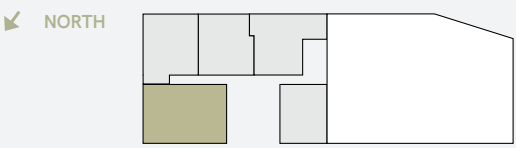
Disclaimer: Blinds, curtains, curtain rails not included. Wardrobes not included indicative of space only. All dimensions are taken approximately from the middle of the room (↔). Each layout may vary. All measurements may vary within the tolerance percentage agreed. The dimensions are not intended for use for carpet/flooring sizes, appliances or furniture. Kitchen layout is indicative only and may be subject to change. Specification and finishes are subject to change if materials and appliances are discontinued or not readily available.



WATERHOUSE
GARDENS

LEVEL 11

E111



2 BEDROOM



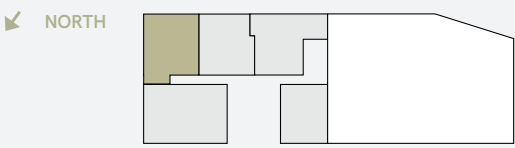
Living / Kitchen		Area	
7.22m x 3.40m	23.70ft x 11.17ft		
Bedroom 1			
4.95m x 3.61m	16.23ft x 11.86ft		
Bedroom 2			
4.92m x 2.75m	16.13ft x 9.02ft		

ST Store Cupboard / Water Cylinder
WS Wardrobe Space

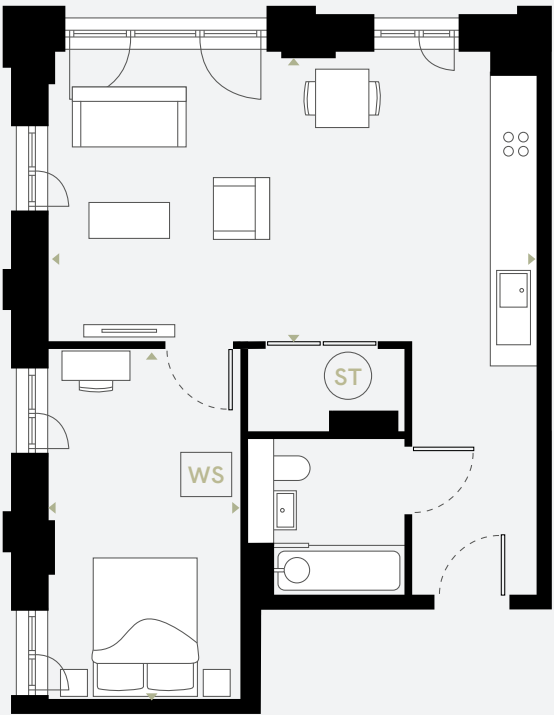
Disclaimer: Blinds, curtains, curtain rails not included. Wardrobes not included indicative of space only. All dimensions are taken approximately from the middle of the room (↔). Each layout may vary. All measurements may vary within the tolerance percentage agreed. The dimensions are not intended for use for carpet/ flooring sizes, appliances or furniture. Kitchen layout is indicative only and may be subject to change. Specification and finishes are subject to change if materials and appliances are discontinued or not readily available.

LEVEL 11

E112



1 BEDROOM

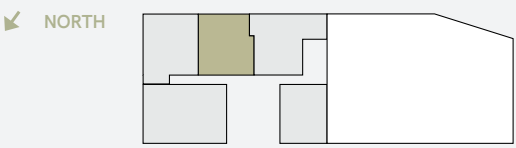


Living / Kitchen		Area	
6.56m x 4.07m	21.53ft x 13.35ft		
Bedroom 1			
4.71m x 2.57m	15.46ft x 8.44ft		

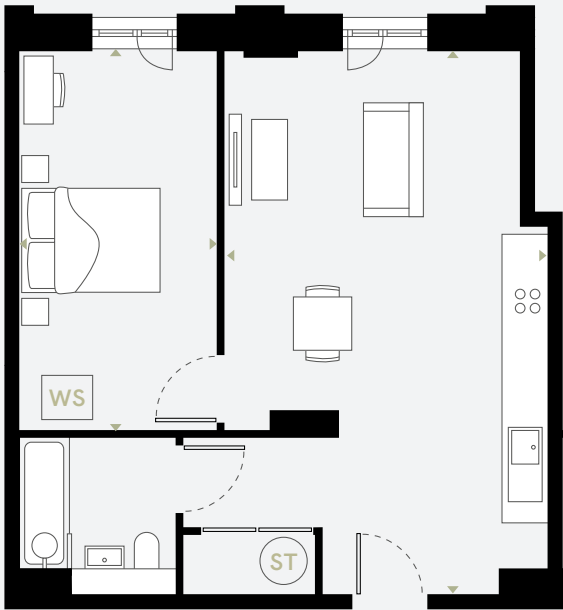
ST Store Cupboard / Water Cylinder
WS Wardrobe Space

LEVEL 11

E113



1 BEDROOM



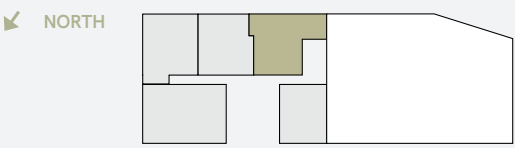
Living / Kitchen		Area	
7.30m x 4.35m	23.95ft x 14.28ft		
Bedroom 1		51.2m²	550.6ft²
5.09m x 2.65m	16.70ft x 8.69ft		

ST Store Cupboard / Water Cylinder
WS Wardrobe Space

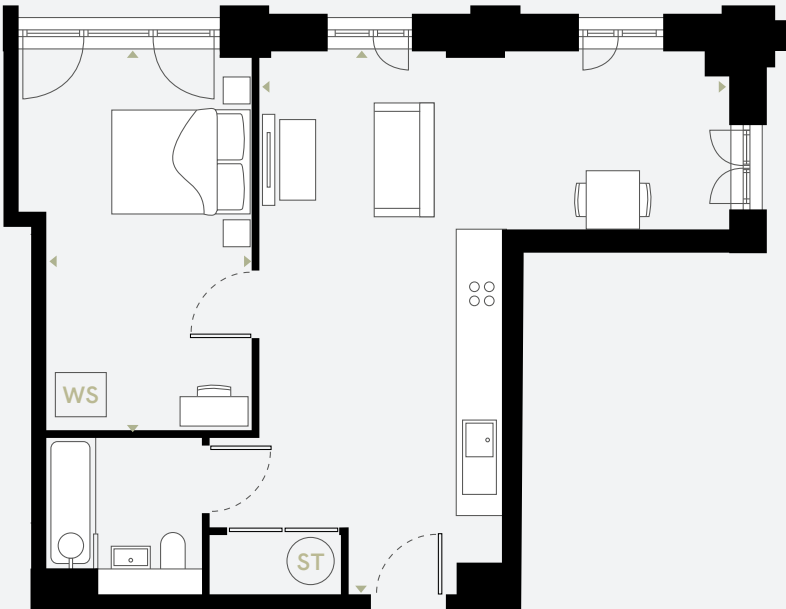
Disclaimer: Blinds, curtains, curtain rails not included. Wardrobes not included indicative of space only. All dimensions are taken approximately from the middle of the room («»). Each layout may vary. All measurements may vary within the tolerance percentage agreed. The dimensions are not intended for use for carpet/ flooring sizes, appliances or furniture. Kitchen layout is indicative only and may be subject to change. Specification and finishes are subject to change if materials and appliances are discontinued or not readily available.

LEVEL 11

E114



1 BEDROOM

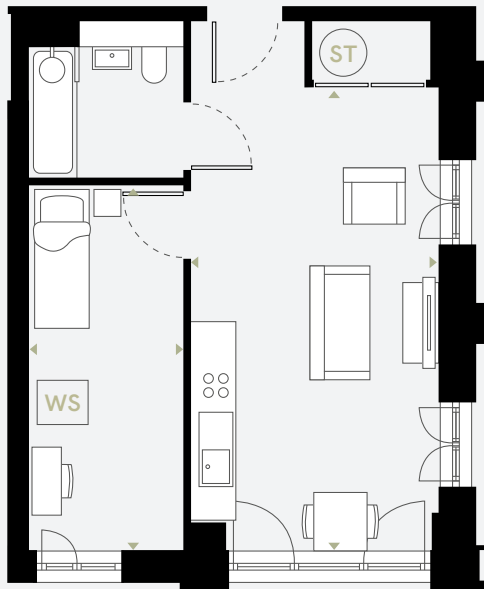


Living / Kitchen		Area	
7.31m x 6.33m	23.99ft x 20.77ft		
Bedroom 1		53.0m²	570.9ft²
5.13m x 3.14m	16.83ft x 10.30ft		

ST Store Cupboard / Water Cylinder
WS Wardrobe Space



1 BEDROOM



Living / Kitchen

6.30m x 3.33m 20.66ft x 10.94ft

Area

39.3m² 423.0ft²

ST Store Cupboard / Water Cylinder

WS Wardrobe Space

Bedroom 1

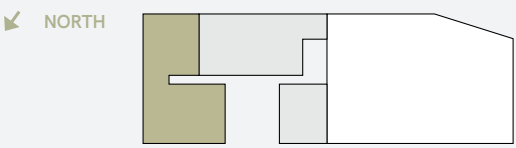
4.91m x 2.07m 16.12ft x 6.79ft

Disclaimer: Blinds, curtains, curtain rails not included. Wardrobes not included indicative of space only. All dimensions are taken approximately from the middle of the room («»). Each layout may vary. All measurements may vary within the tolerance percentage agreed. The dimensions are not intended for use for carpet/flooring sizes, appliances or furniture. Kitchen layout is indicative only and may be subject to change. Specification and finishes are subject to change if materials and appliances are discontinued or not readily available.

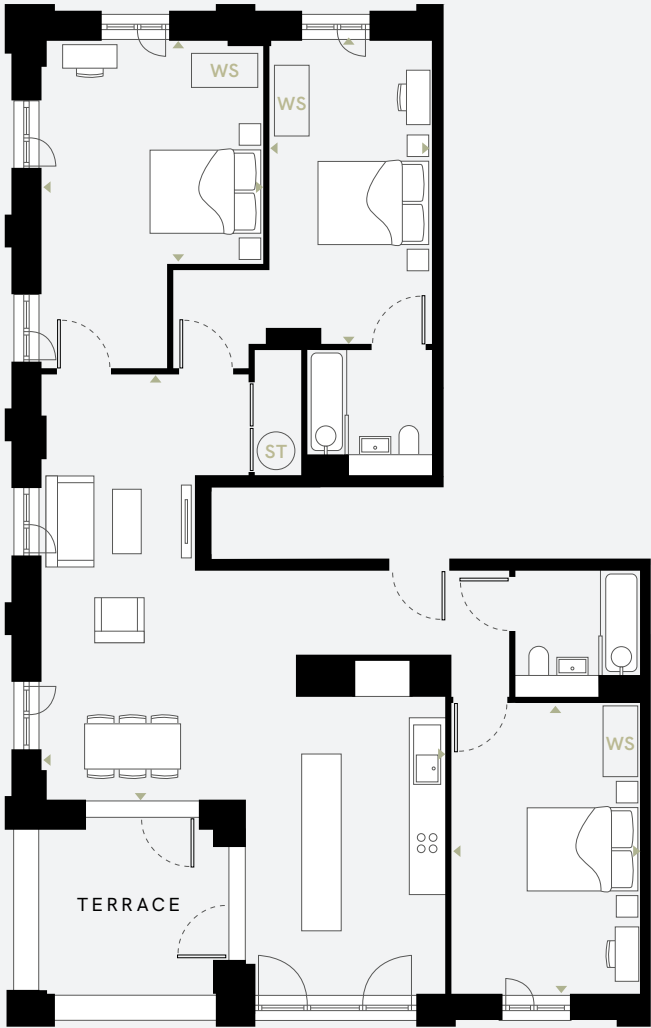


WATERHOUSE
GARDENS

E121



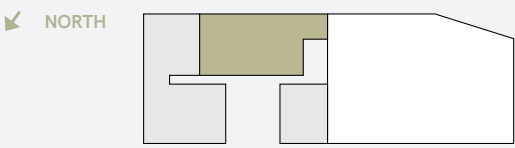
3 BEDROOM



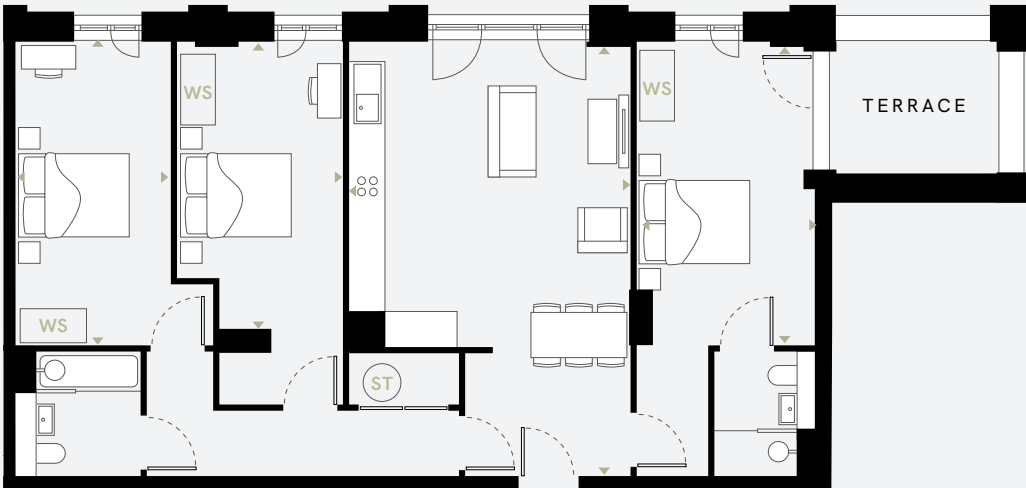
Living / Kitchen		Area
7.12m x 6.80mt	23.36ft x 22.30ft	112.7m² 1213.5ft²
Bedroom 1		
5.51m x 3.72m	18.08ft x 12.22ft	
Bedroom 2		
5.10m x 2.74m	16.74ft x 8.98ft	
Bedroom 3		
4.89m x 3.12m	16.06ft x 10.42ft	

Disclaimer: Blinds, curtains, curtain rails not included. Wardrobes not included indicative of space only. All dimensions are taken approximately from the middle of the room (↔). Each layout may vary. All measurements may vary within the tolerance percentage agreed. The dimensions are not intended for use for carpet/ flooring sizes, appliances or furniture. Kitchen layout is indicative only and may be subject to change. Specification and finishes are subject to change if materials and appliances are discontinued or not readily available.

E122



3 BEDROOM



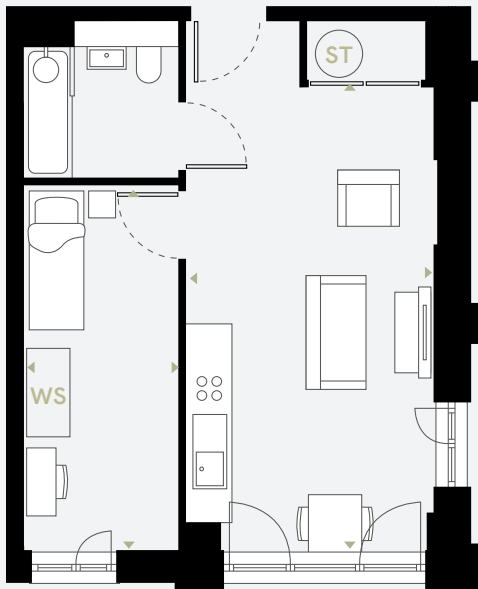
Living / Kitchen		Area		ST Store Cupboard / Water Cylinder
7.22m x 4.73m	23.70ft x 15.53ft	98.6m ²	1061.0ft ²	
Bedroom 1				WS Wardrobe Space
7.30m x 2.99m	23.95ft x 9.82ft			
Bedroom 2				
6.10m x 2.79m	20.00ft x 9.17ft			
Bedroom 3				
5.11m x 3.33m	16.77ft x 10.92ft			

E123

NORTH



1 BEDROOM



Living / Kitchen

6.23m x 3.33m 20.44ft x 10.94ft

Area

39.3m² 423.0ft²

ST Store Cupboard / Water Cylinder

WS Wardrobe Space

Bedroom 1

4.91m x 2.08m 16.12ft x 6.82ft

Disclaimer: Blinds, curtains, curtain rails not included. Wardrobes not included indicative of space only. All dimensions are taken approximately from the middle of the room («»). Each layout may vary. All measurements may vary within the tolerance percentage agreed. The dimensions are not intended for use for carpet/flooring sizes, appliances or furniture. Kitchen layout is indicative only and may be subject to change. Specification and finishes are subject to change if materials and appliances are discontinued or not readily available.



WATERHOUSE
GARDENS

THE RESIDENCES

Specifications

RESIDENT AMENITIES

- Concierge
- Parcel store
- Cycle Store
- Swimming pools
- Private landscaped garden
- Squash and basketball courts
- Games room
- Private dining
- Cinema room
- Meeting room
- Work spaces
- Lounges

PUBLIC AMENITIES

A new public avenue with shops, restaurants and office space

FLOORING

- Laminate wood flooring in bedroom, lounge and kitchen
- Porcelain tiling in bathroom and ensuite

KITCHENS

- Oversize full height kitchen wall units
- LED strip downlighting
- Quartz worktops & splashback
- Ceramic induction hob with extractor hood
- Fully-integrated dishwasher
- Fully-integrated oven
- Fully-integrated 70/30 split fridge/freezer
- Free-standing washer/dryer in storage cupboard
- Black stainless steel sink and mixer tap

BATHROOMS

- Backlit heated mirror cabinet
- WC and basin
- Quartz vanity unit
- Porcelain tiling
- Black mixer taps and shower head
- Black heated towel rail

HEATING & ELECTRICAL

- Wall-mounted electric panel heaters - WIFI enabled
- Integrated TV/reception system
- Entrance access system, controlled via app
- Fire alarms & sprinklers
- High speed internet access
- Power outlets



Notes: The design development of Waterhouse Gardens is still ongoing and certain items of the specification may be amended to an item of equivalent quality.



T & C 'S

Salboy International Ltd on behalf of Waterhouse Gardens gives notice to anyone who may read these particulars as follows: 1. These particulars are prepared for the guidance only of prospective purchasers. They are intended to give a fair overall description of the property but are not intended to constitute part of an offer or contract. 2. Any information contained herein (whether in the text, plans or photographs) is given in good faith but should not be relied upon as being a statement or representation of fact. 3. Nothing in these particulars shall be deemed to be a statement that the property is in good condition or otherwise nor that any services or facilities are in good working order. 4. The photographs appearing in this brochure show only certain parts and aspects of the property at the time when the photographs were taken. Certain aspects may have changed since the photographs were taken and it should not be assumed that the property remains precisely as displayed in the photographs. Furthermore no assumptions should be made in respect of parts of the property which are not shown in the photographs. 5. Any areas, measurements or distances referred to herein are approximate only. 6. Where there is reference in these particulars to the fact that alterations have been carried out or that a particular use is made of any part of the property this is not intended to be a statement that any necessary planning, building regulations or other consents have been obtained and these matters must be verified by any intending purchaser. 7. Descriptions of a property are inevitably subjective and the descriptions contained herein are used in good faith as an opinion and not by way of statement of fact. Published June 2024, Salboy.co.uk. 8 All images used are for illustrative purposes only. These and the dimensions given are illustrative for this house type and individual properties may differ, in particular, final elevations of the property purchased may differ from those shown.